



## The Helios at Television Centre





**DOUBLE BEDROOM \* OPEN PLAN KITCHEN/DINING/RECEPTION  
BATHROOM \* EPC RATING TBC**

A wonderful 1 bedroom duplex flat arranged over the 1<sup>st</sup> and 2<sup>nd</sup> floors of the iconic former BBC Television Centre building. This is a fantastic opportunity to live in sheer luxury and benefit from everything this new development has to offer. The property benefits from a Gym and swimming pool, residents cinema, communal meeting and sitting areas and 24 hour concierge. A stone's throw to Westfield London and with multiple transport links this is a MUST SEE!

**GUIDE £760,000**

**LEASEHOLD**

**SUBJECT TO CONTRACT**

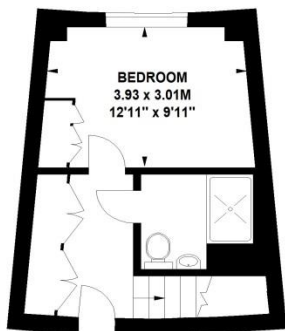
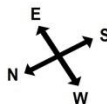
**LEASE: APX 975 YEARS**

**SERVICE CHARGE: APX £3,940 PA**

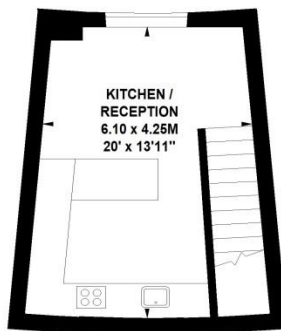
**GROUND RENT: APX £450 PA**

## The Helios, W12

**Approximate Gross Internal Area 52 sq m / 564 sq ft**



**First Floor**



**Second Floor**

Measurements taken from development brochure  
Floor Plan produced for Finlay Brewer by Mays Floorplans © . Tel 020 3397 4594  
Illustration for identification purposes only, not to scale  
All measurements are maximum, and include wardrobes and window bays where applicable

**113 Askew Road, London W12 9AS**  
**Tel: 020 8749 7719 askewsales@finlaybrewer.co.uk**