



GREEN STREET

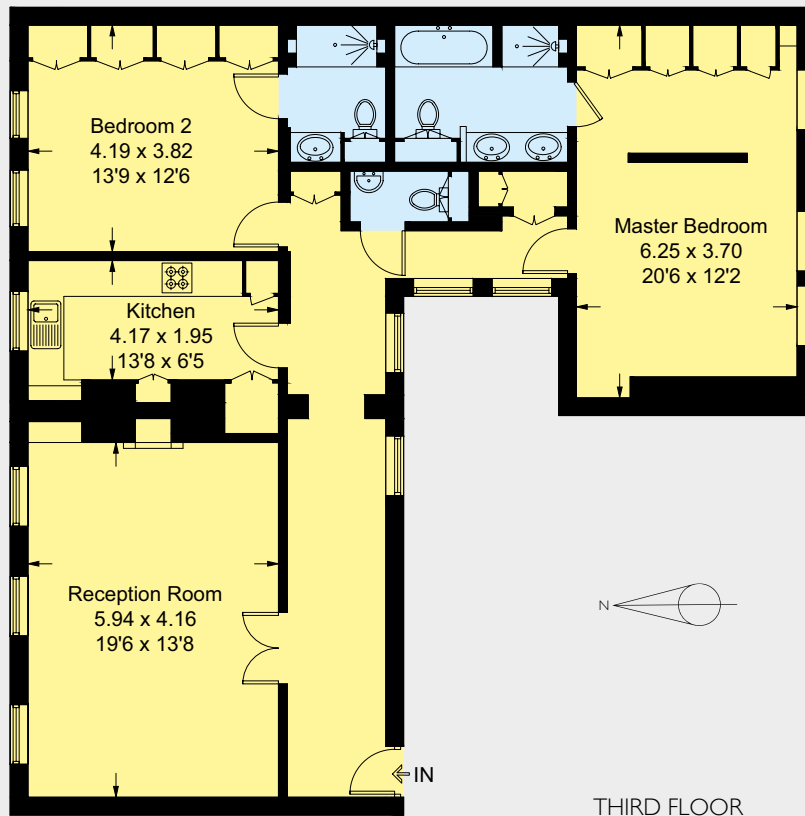
MAYFAIR W1



A WONDERFUL TWO BEDROOM APARTMENT OF 1,232 SQUARE FEET, LOCATED ON A QUIET RESIDENTIAL STREET, WITH A LONG LEASE AND LIFT



Approximate Gross Internal Area
1,232 Sq Ft - 114.5 Sq M including any/all areas under 1.5m head height



Ideally located on one of Mayfair's most popular residential streets, this two Bedroom apartment offers wonderful space throughout with a large open plan Reception/Dining Room spanning three windows across with views back onto Green Street. In addition, there is a fully fitted Kitchen and two large En-Suite double Bedrooms with the Master benefiting from a walk-through Dressing Area.

Situated within a quintessential Mayfair red brick building, this bright and spacious apartment is located close to Hyde Park and the Michelin starred restaurants and Member's Clubs of Mayfair.

ACCOMMODATION

- Reception Room
- Dining Room
- Kitchen
- Master Bedroom with En-Suite Bathroom
- Second Bedroom with En-Suite Shower Room
- Guest WC
- Lift
- 1,232 Square Feet
- EPC Band: C

TERMS

Leasehold: 122 Years Plus
 Service Charge: £4,000 Per Annum
 Ground Rent: TBC
 Price: £3,000,000

Sole Agent



102 Mount Street · London · W1K 2TH
 T: 020 7529 5566 E: sales@wetherell.co.uk
wetherell.co.uk

Wetherell have no authority to make or give any representations or warranties in relation to the property. These particulars do not form part of any offer or contract and must not be relied upon as statements or representations of fact. Any areas, measurements or distances are approximate. The text, photographs and plans are for guidance only and are not necessarily comprehensive. It should not be assumed that the property has all the necessary planning, building regulation or other consents and Wetherell have not tested any services, equipment or facilities. Purchasers must satisfy themselves by inspection or otherwise. Energy Efficiency Rating: Band C. March 2018

NO-ONE KNOWS MAYFAIR BETTER THAN WETHERELL