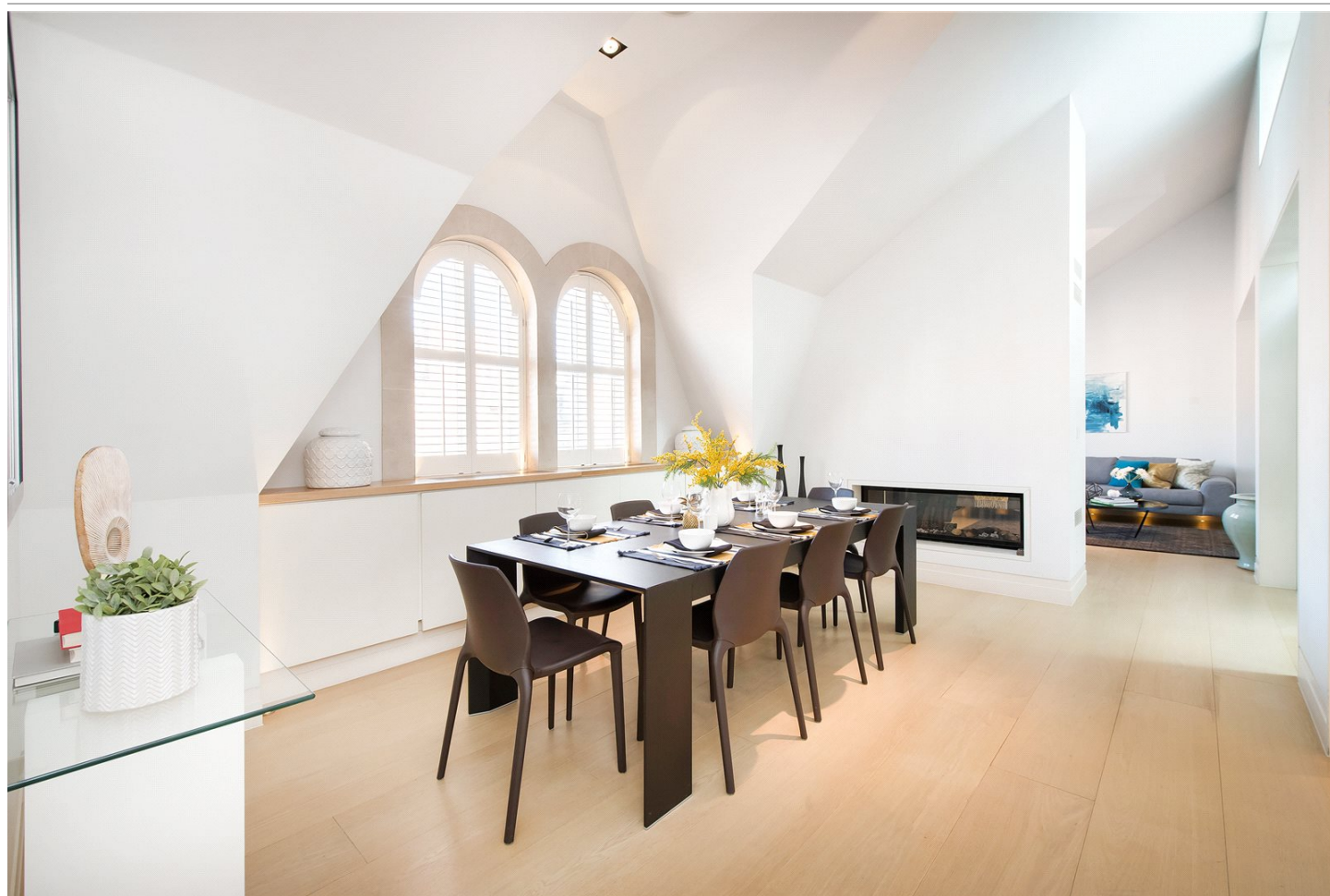




# GREEN STREET MAYFAIR



This spacious three bedroom property of 2,060 square feet is located in a fantastic building on Green Street, a street that puts on a delightful display of late Victorian architecture.

**£3,800 PER WEEK PLUS FEES**  
FURNISHED

**WETHERELL**  
MAYFAIR'S FINEST PROPERTIES

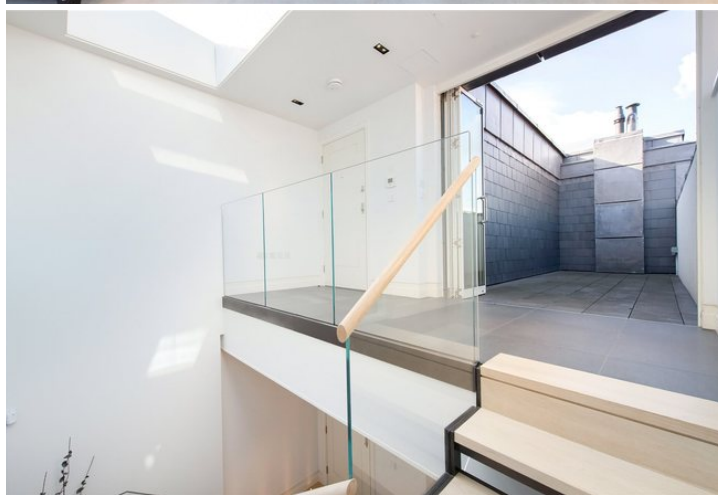
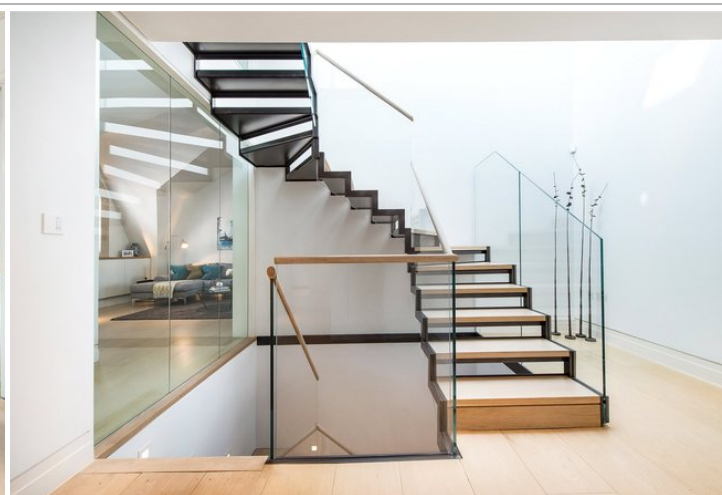
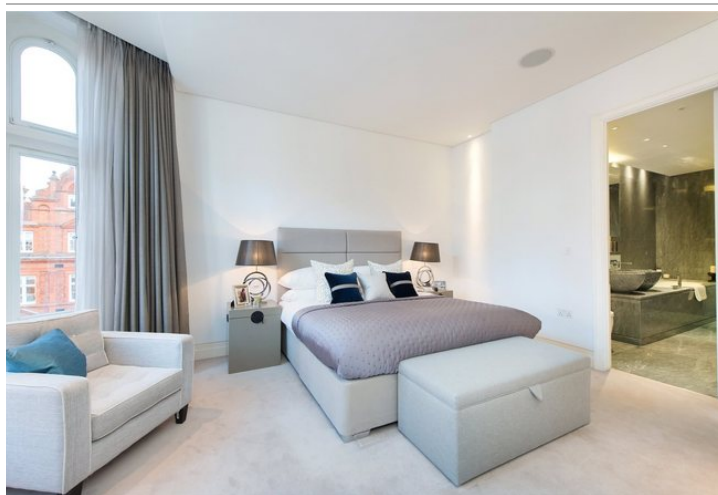
102 Mount Street · London · W1K 2TH  
T: 020 7529 5588 E: [rentals@wetherell.co.uk](mailto:rentals@wetherell.co.uk)  
[wetherell.co.uk](http://wetherell.co.uk)

NO-ONE KNOWS MAYFAIR BETTER THAN WETHERELL





## GREEN STREET MAYFAIR



LIFT & PORTER • ROOF TERRACE • SUPERB ENTERTAINING SPACE

NO-ONE KNOWS MAYFAIR BETTER THAN WETHERELL





## GREEN STREET MAYFAIR

This spacious three bedroom property of 2,060 square feet is located in a fantastic building on Green Street, a street that puts on a delightful display of late Victorian architecture.

This naturally bright and newly renovated apartment comprises of a fabulous double reception room with an attached kitchen, a master bedroom and two further bedrooms, complete with sleek en suite bathrooms. This contemporary home also benefits from lift access, porter and a terrace with superb cityscape views.

Green Street runs from Park Lane to North Audley Street, with Hyde Park and the amenities of Oxford Street only a short walk away.

- \* Large Double Reception with connecting Kitchen
- \* Master Bedroom with en Suite
- \* Two Double Bedrooms with En Suites
- \* Roof Terrace
- \* Newly Renovated
- \* Porter
- \* Lift
- \* 2,060 sq.ft.

\* Tenant Fees Apply - £240.00 inclusive of VAT is payable by the Tenant for Wetherell conducting tenant checks, credit checks and drawing up a tenancy agreement. Cost is payable per unit dwelling.

**£3,800 PER WEEK PLUS FEES**  
FURNISHED

Wetherell have no authority to make or give any representations or warranties in relation to the property. These particulars do not form part of any offer or contract and must not be relied upon as statements or representations of fact. Any areas, measurements or distances are approximate. The text, photographs and plans are for guidance only and are not necessarily comprehensive. It should not be assumed that the property has all the necessary planning, building regulation or other consents and Wetherell have not tested any services, equipment or facilities. Purchasers must satisfy themselves by inspection or otherwise. 2019

**WETHERELL**  
MAYFAIR'S FINEST PROPERTIES

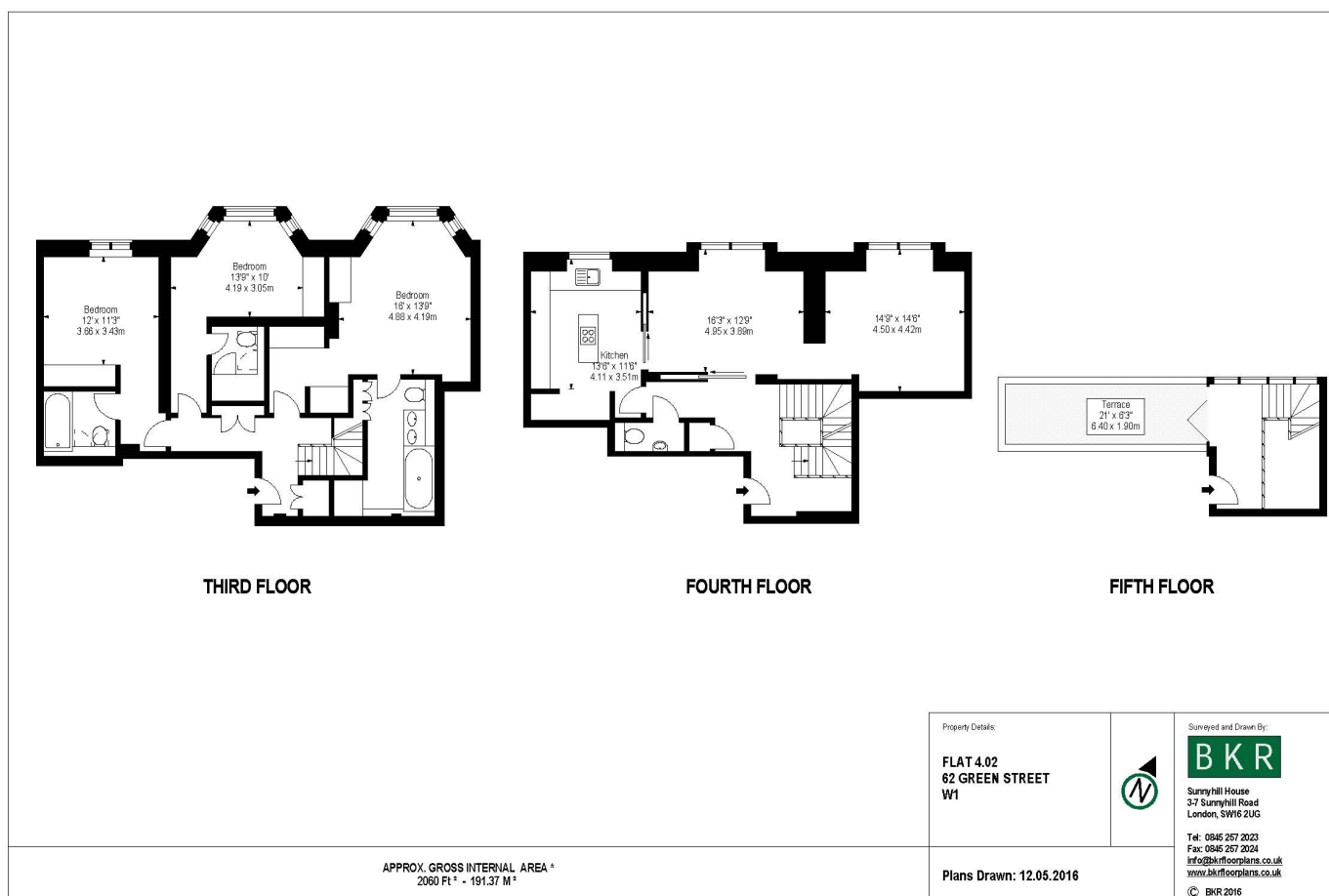
102 Mount Street · London · W1K 2TH  
T: 020 7529 5588 E: [rentals@wetherell.co.uk](mailto:rentals@wetherell.co.uk)  
[wetherell.co.uk](http://wetherell.co.uk)

NO-ONE KNOWS MAYFAIR BETTER THAN WETHERELL





## GREEN STREET MAYFAIR



Wetherell have no authority to make or give any representations or warranties in relation to the property. These particulars do not form part of any offer or contract and must not be relied upon as statements or representations of fact. Any areas, measurements or distances are approximate. The text, photographs and plans are for guidance only and are not necessarily comprehensive. It should not be assumed that the property has all the necessary planning, building regulation or other consents and Wetherell have not tested any services, equipment or facilities. Purchasers must satisfy themselves by inspection or otherwise. 2019

# WETHERELL

MAYFAIR'S FINEST PROPERTIES

102 Mount Street · London · W1K 2TH  
T: 020 7529 5588 E: rentals@wetherell.co.uk  
wetherell.co.uk

NO-ONE KNOWS MAYFAIR BETTER THAN WETHERELL

