

Meadow Way
Horley, RH6

Freehold
Offers in excess of £465,000



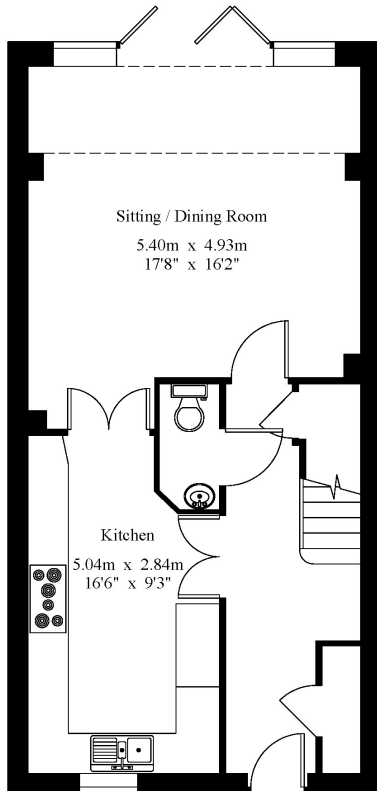
5 BEDROOM TOWN HOUSE | Quiet Cul-De-Sac | Open Plan Living/Dining Room | Modern Kitchen
| Split Over 3 Floors | 1.8 Miles From Horley Train Station | 2.9 Miles To Gatwick Airport...ctd...



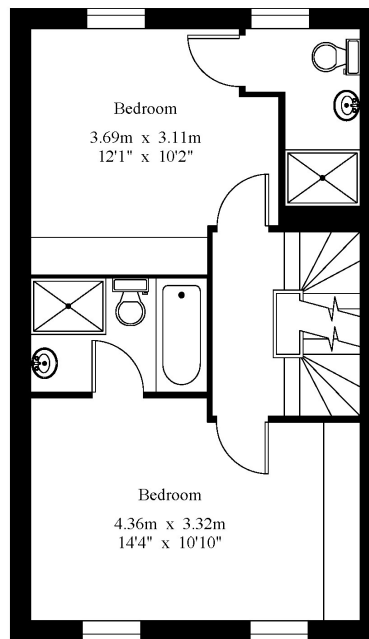
THE COURTYARD | LONESOME LANE | REIGATE | RH2 7QT
Tel: 01737 246 777
E-mail: hello@powerbespoke.co.uk

 powerbespoke
— remarkably different. —

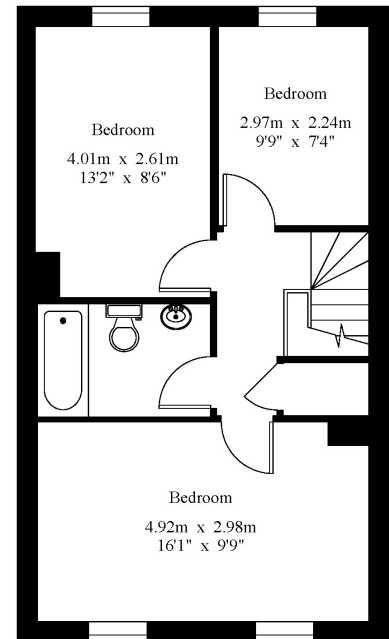
Gross Internal Area : 140.3 sq.m (1510 sq.ft.)



Ground Floor



First Floor



Second Floor

FOR IDENTIFICATION PURPOSES ONLY

© 2017 Trueplan (UK) Ltd. 01892 614 881

These particulars do not form part of any offer or contract and must not be relied upon as statements or representations of fact. Any areas, measurements or distances are approximate. The text, photographs and plans are for guidance only and are not necessarily comprehensive. It should not be assumed that the property has all the necessary planning, building regulation or other consents and we have not tested services, equipment or facilities. Purchasers must satisfy themselves by inspection or otherwise.



5 BEDROOM TOWN HOUSE | Quiet Cul-De-Sac | Open Plan Living/Dining Room | Modern Kitchen | Split Over 3 Floors | 1.8 Miles From Horley Train Station | 2.9 Miles To Gatwick Airport.

In association with Mansell McTaggart

Open House, 27th Jan. By Appointment Only

Other Information...

Parking Arrangements: Off Street
Vendors position: Needs To Find
Council Tax Band: E
Garden Direction: West
Stamp Duty 1st Home: £13,750
Stamp Duty 2nd Home: £28,000

These particulars do not form part of any offer or contract and must not be relied upon as statements or representations of fact. Any areas, measurements or distances are approximate. The text, photographs and plans are for guidance only and are not necessarily comprehensive. It should not be assumed that the property has all the necessary planning, building regulation or other consents and we have not tested services, equipment or facilities. Purchasers must satisfy themselves by inspection or otherwise.