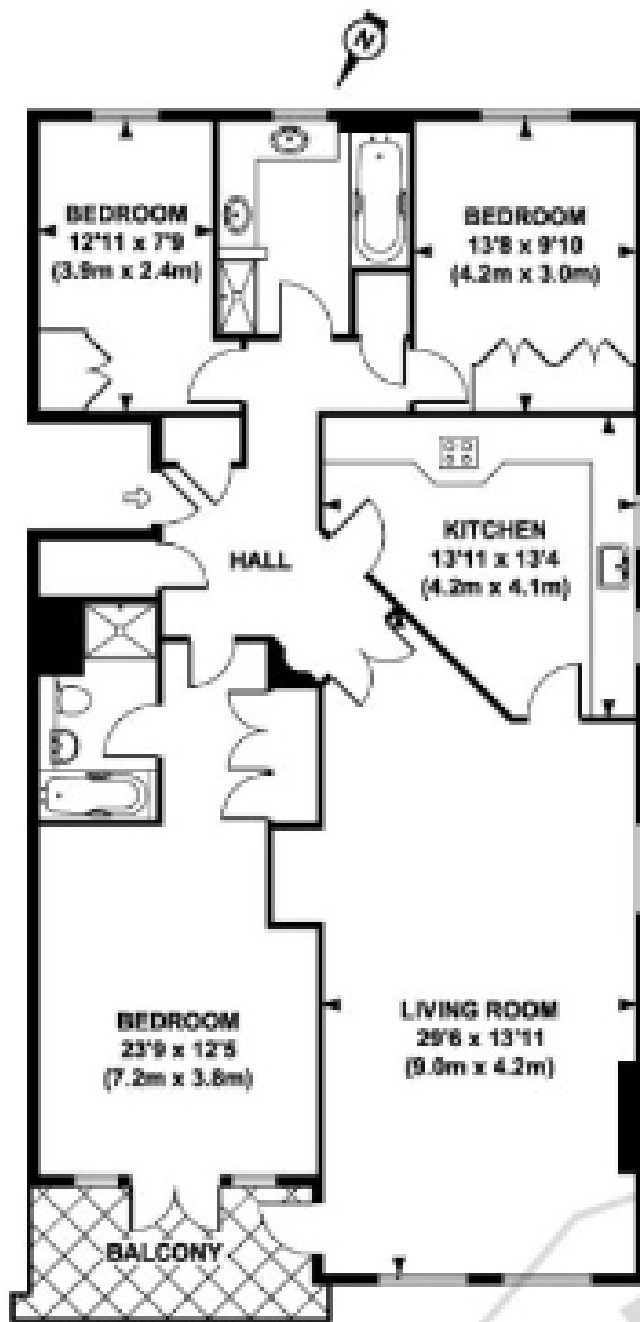




A stunning, very spacious 2nd floor executive apartment with views over the River Thames. The property comprises; dual aspect living/dining area with a balcony, eat-in kitchen, master bedroom with built in wardrobes, en-suite and doors leading on to the balcony with river views, 2nd large bedroom with built in wardrobes, 3rd bedroom/office and family bathroom with separate shower. The property also benefits from immaculate communal gardens and lift.





FIRST FLOOR

## CLEARWATER PALACE

**APPROX. GROSS INTERNAL FLOOR AREA 1265 SQ FT / 117 SQ M**

We have prepared these sales particulars as a general guide after a brief inspection of the property and with information supplied by the vendors. No detailed survey was carried out nor were the services and appliances tested. Photographs are not comprehensive and no assumption should be made that the property remains as displayed. The floorplans are for representation purposes only as defined by the RICS Code of Measuring Practice. Measurements, room shapes and sizes are approximate and must not be relied on. No responsibility is taken for errors or omissions. All fixtures and fittings, carpets, curtains/blinds, lighting and kitchen equipment whether fitted or not, are deemed to be removable by the vendors unless specifically itemised. No representation is given as to the title of the property.

We have prepared these sales particulars as a general guide after a brief inspection of the property and with information supplied by the Vendors. No detailed survey was carried out nor were the services and appliances tested. Photographs are not comprehensive and no assumption should be made that the property remains as displayed.

The floor plans are for representation purposes only as defined by the RICS Code of Measuring Practice. Measurements, room shapes and sizes are approximate and must not be relied on. No responsibility is taken for errors or omissions. All fixtures and fittings, carpets, curtains/blinds, lighting and kitchen equipment, whether fitted or not, are deemed to be removable by the Vendors unless specifically itemised. No representation is given as to the title of the property.

# HJC

HIGHER VALUES

HJC Surbiton 020 8390 0404 | HJC Lettings 020 8390 9290 | HJC Thames Ditton 020 8398 3707  
surbiton@hjc.co.uk | lettings@hjc.co.uk | thamesditton@hjc.co.uk

Reg no: 05272208 | VAT no: 720 5720 65