

Carver Street, Jewellery Quarter, B1
£925 per month, For long let



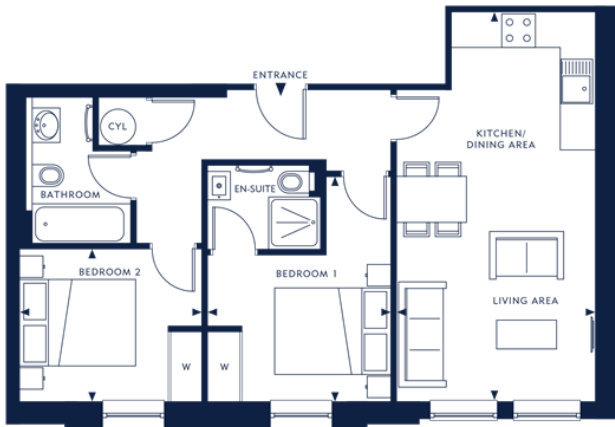
Greystone Lettings are pleased to offer and market this stunning 2 bedroom apartment.





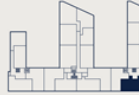
APARTMENT AREA 57.66 SQ.M 620.64 SQ.FT

Living / Kitchen / Dining Area	6.80m x 3.47m	22'3" x 11'3"
Bedroom 1	3.90m x 3.20m	12'7" x 10'4"
Bedroom 2	3.20m x 2.70m	10'4" x 8'8"

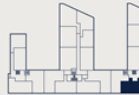


- ↔ - Measurement points
- W - Fitted wardrobe
- CYL - Boiler cylinder

THIRD FLOOR



SECOND FLOOR



FIRST FLOOR



GROUND FLOOR



Greystone Lettings give notice to anyone reading these particulars that: (i) these particulars do not constitute part of an offer or contract; (ii) these particulars and any pictures or plans represent the opinion of the author and are given in good faith for guidance only and must not be construed as statements of fact; (iii) nothing in the particulars shall be deemed a statement that the property is in good condition otherwise; we have not carried out a structural survey of the property and have not tested the services, appliances or specified fittings.

Long Description

Located on Carver Street, The Foundry is a development which consists of 61 modern, one, two and three bedroom apartments, developed and constructed by Delph Group who pioneered and developed the popular Metalworks on Warstone Lane.

Greystone are pleased to offer this stunning 2 bedroom apartment which is spacious throughout.

The apartment comes complete with fitted wardrobes in the bedrooms with the Master bedroom having the advantage of an en-suite shower.

The lounge is spacious, contemporary and overlooking Carver Street and offers plenty of natural light throughout.

Timber effect matching doors and flooring throughout the apartment.

Family bathroom to include modern fixtures and fittings with well planned built in storage.

The kitchen is fully fitted with stone worktops and integrated appliances to include fridge freezers, washer drier, hob and oven.

The Jewellery Quarter is an amazing place to both live and work with many coffee shops, award winning restaurants and bars to eat and dine at.

Located within walking distance to St Pauls Square and Colmore Row and the City. The Foundry makes a perfect home for Professionals who are looking for somewhere special to live.

Excellent transport links into and out of the City by rail and bus. Close to the A38 and Motorway links.

AVAILABLE March