



An immaculate three bedroom maisonette in the heart of the Mayfair Village with a long lease and a private terrace.

BALFOUR MEWS MAYFAIR W1



A stunning duplex apartment of 1,442 square feet covering the first, second and third floors of this historic stable, now converted into a luxurious Mayfair maisonette, with a private terrace and air conditioning throughout.

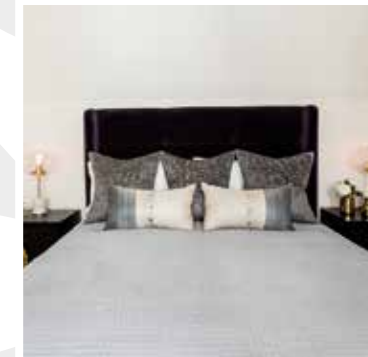
BALFOUR MEWS MAYFAIR W1





Accommodation

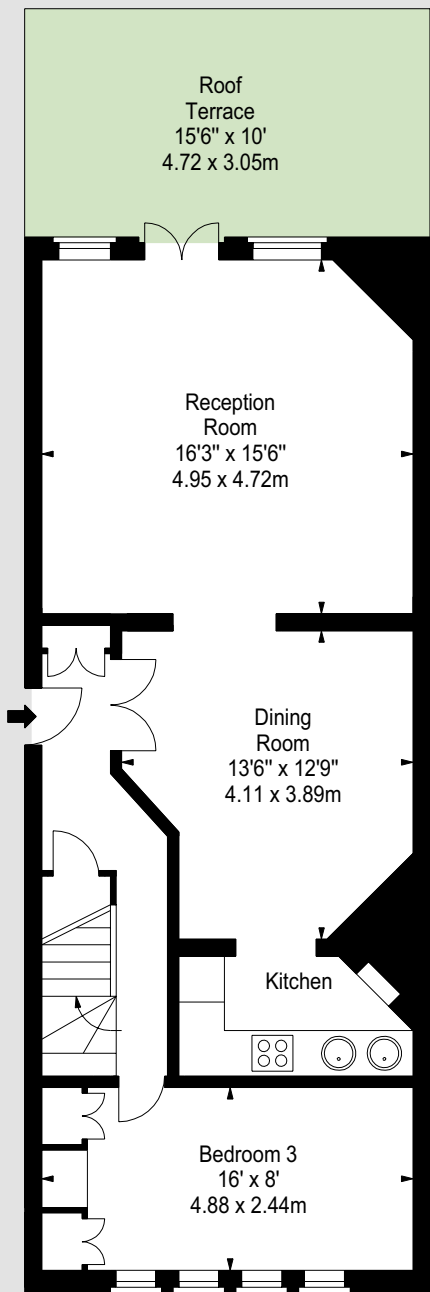
Entrance Hall / Kitchen /
Dining Room /
Reception Room /
Master Bedroom with
En Suite Bathroom /
Second Bedroom /
Third Bedroom / Bedroom
Four / Dressing Room /
Family Bathroom /
Private Terrace /
1,442 Square Feet



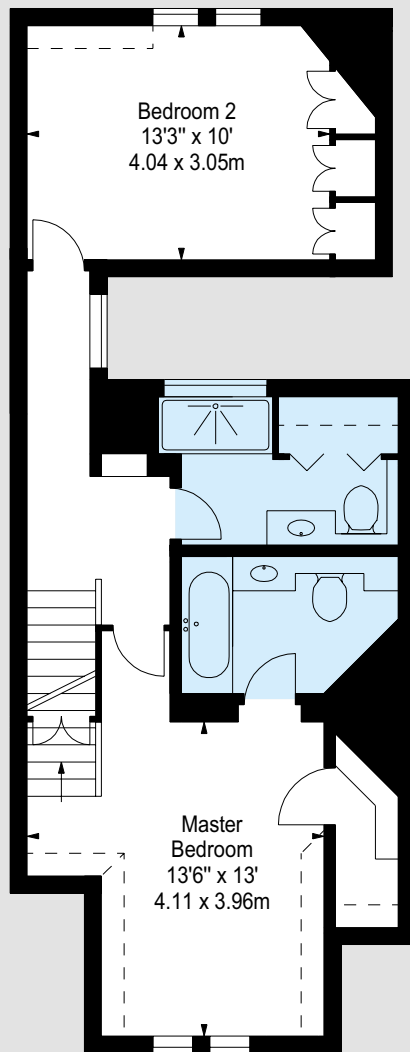
Comprising three wonderfully presented Bedrooms set over the first and second floors, this spacious and bright maisonette offers great entertaining space and takes full advantage of its East facing private terrace leading off from the calming interior designed Reception Room. The Master Bedroom and Second Bedroom are situated at the front of the maisonette and benefit from Westerly views onto Balfour Mews.

Balfour Mews sits between South Audley Street and Park Lane, built in 1898 by Balfour and Turner. Once a stable, it is now a quiet and private street situated in the heart of Mayfair, close to Scott's restaurant and the boutique shops of Mount Street.

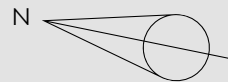




FIRST FLOOR

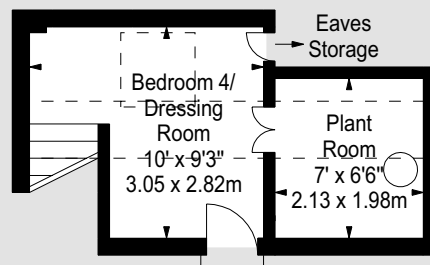


SECOND FLOOR

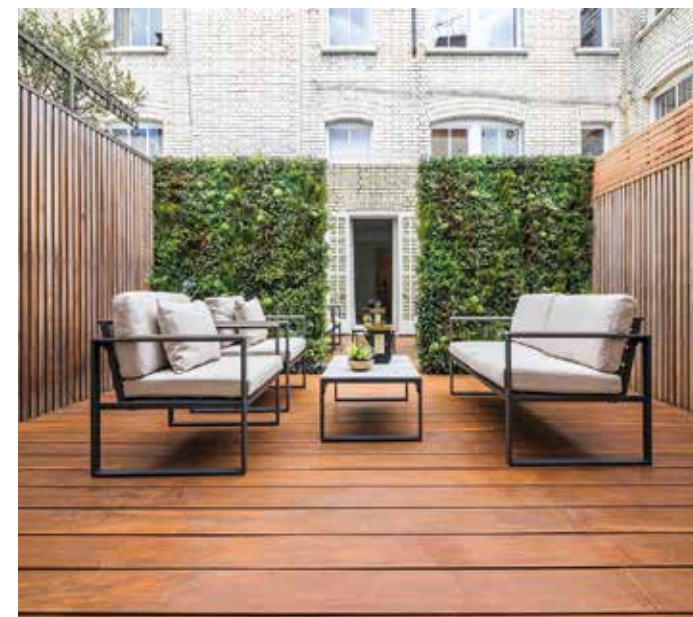


APPROXIMATE GROSS INTERNAL AREA

1,442 Square Feet /
133.96 Square Metres



THIRD FLOOR



LEASEHOLD: 147 YEARS REMAINING
GROUND RENT: PEPPERCORN
PRICE: £3,650,000



120a Mount Street, London W1K 3NN
T: 020 7499 1012
E: mayfair@knightfrank.com
knightfrank.co.uk

102 Mount Street, London W1K 2TH
T: 020 7529 5566
E: sales@wetherell.co.uk
wetherell.co.uk

Wetherell have no authority to make or give any representations or warranties in relation to the property. These particulars do not form part of any offer or contract and must not be relied upon as statements or representations of fact. Any areas, measurements or distances are approximate. The text, photographs and plans are for guidance only and are not necessarily comprehensive. It should not be assumed that the property has all the necessary planning, building regulation or other consents and Wetherell have not tested any services, equipment or facilities. Purchasers must satisfy themselves by inspection or otherwise. Energy Efficiency Rating: E. 2019.