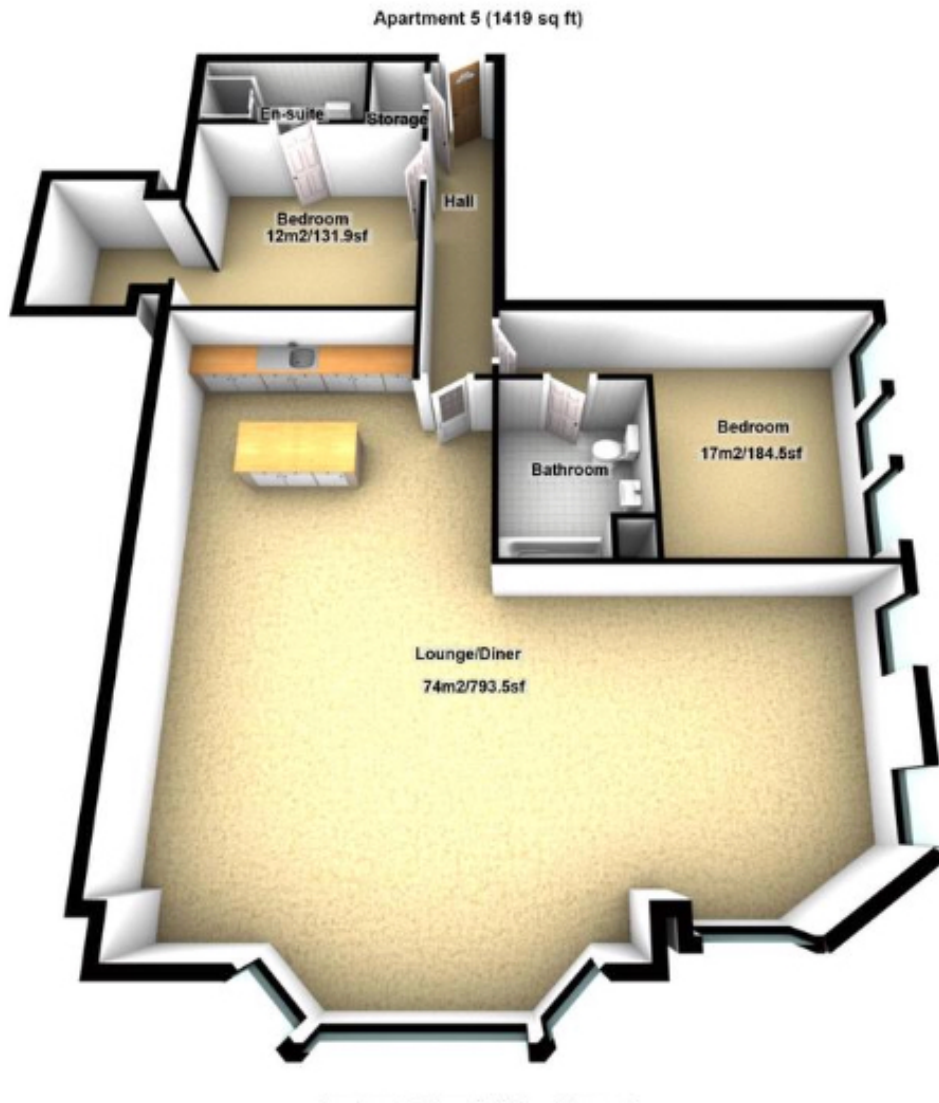





- * Book A Viewing Online Now;
Visit : logicstates.co.uk
- * 2 Bedrooms, 1st Floor Apartment
 - * 2 Bathrooms
 - * Open Plan Lounge
- * Dual Aspect, Kitchen / Living Area






These particulars do not form part of any offer or contract and must not be relied upon as statements or representations of fact. Any areas, measurements or distances are approximate. The text, photographs and plans are for guidance only and are not necessarily comprehensive. It should not be assumed that the property has all the necessary planning, building regulation or other consents and we have not tested services, equipment or facilities. Purchasers must satisfy themselves by inspection or otherwise.



Energy Efficiency Rating		
	Current	Potential
Very energy efficient - lower running costs		
(92-100) A		
(81-91) B		
(69-80) C		
(55-68) D		
(39-54) E		
(21-38) F		
(1-20) G	21	21
Not energy efficient - higher running costs		
England, Scotland & Wales EU Directive 2002/91/EC 		

Environmental Impact (CO ₂) Rating		
	Current	Potential
Very environmentally friendly - lower CO ₂ emissions		
(92-100) A		
(81-91) B		
(69-80) C		
(55-68) D		
(39-54) E		
(21-38) F	33	33
(1-20) G		
Not environmentally friendly - higher CO ₂ emissions		
England, Scotland & Wales EU Directive 2002/91/EC 		

Logic Are Offering For Sale This 1st Floor 2 Bedroom Apartment.

To Comprise;
 Entrance Hall
 Bedroom 1
 Bathroom
 Bedroom 2
 En Suite
 Storage Cupboard
 Open Plan Lounge/Diner/Kitchen

Apartment Size - 1426 sq'
 Ground Rent - £350 p.a.
 Service Charge - £4,474 p.a.

The Apartment is located within the Grade 11 Listed Tower Building, offering high specification spacious living space.
 Close to Liverpool's historic waterfront and the 'Three Graces'.
 The wonderful Grade II* Listed Tower Building is situated in the Historic Down Town area of the city which forms part of the World Heritage Site.

The Tower was built in 1908 as an office block but was converted in 2006 into 73 apartments, with the three lower floors being retained for commercial and retail use.

In 2016 the new freeholder of the building took about the redevelopment of two of the remaining commercial floors into 32 apartments, which are due for completion in 2017.

The Tower's roof and external terracotta cladding has also undergone major works throughout 2016-2017 to protect the buildings waterproof envelope.

The white glazed terracotta cladding on the upper facade of the building was used by the architect in an attempt to cope with the polluted atmosphere of the city and was produced by the famous pottery-maker Doulton.

Overlooking the Tower is the world famous Royal Liver Buildings built in 1910 also designed by architect W. Aubrey Thomas.

On the North side of the Tower is Our Lady and St Nicholas Church (known as the Sailors Church), the church was

97 | SOUTH ROAD | WATERLOO | L22 0LR
 Tel: 0151 920 2404
 E-mail: info@logicstates.co.uk





originally dedicated in 1360 and has been rebuilt many times over the years.

The present day Tower Building is the third Tower to be built on this site since 1252.

As far back as 1252 there has been a townhouse on the Liverpool shore. Sir John Stanley pulled down the old house in 1406 and built the first Tower known as the Tower of Liverpool. ... The Tower stood at the shore end of Water Street.

To View Call Logic. 0151 920 2404 OR-

Book A Viewing Online Now;
Visit www.logicstates.co.uk

These particulars do not form part of any offer or contract and must not be relied upon as statements or representations of fact. Any areas, measurements or distances are approximate. The text, photographs and plans are for guidance only and are not necessarily comprehensive. It should not be assumed that the property has all the necessary planning, building regulation or other consents and we have not tested services, equipment or facilities. Purchasers must satisfy themselves by inspection or otherwise.