

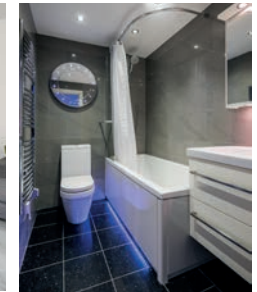


AVENFIELD HOUSE

MAYFAIR W1

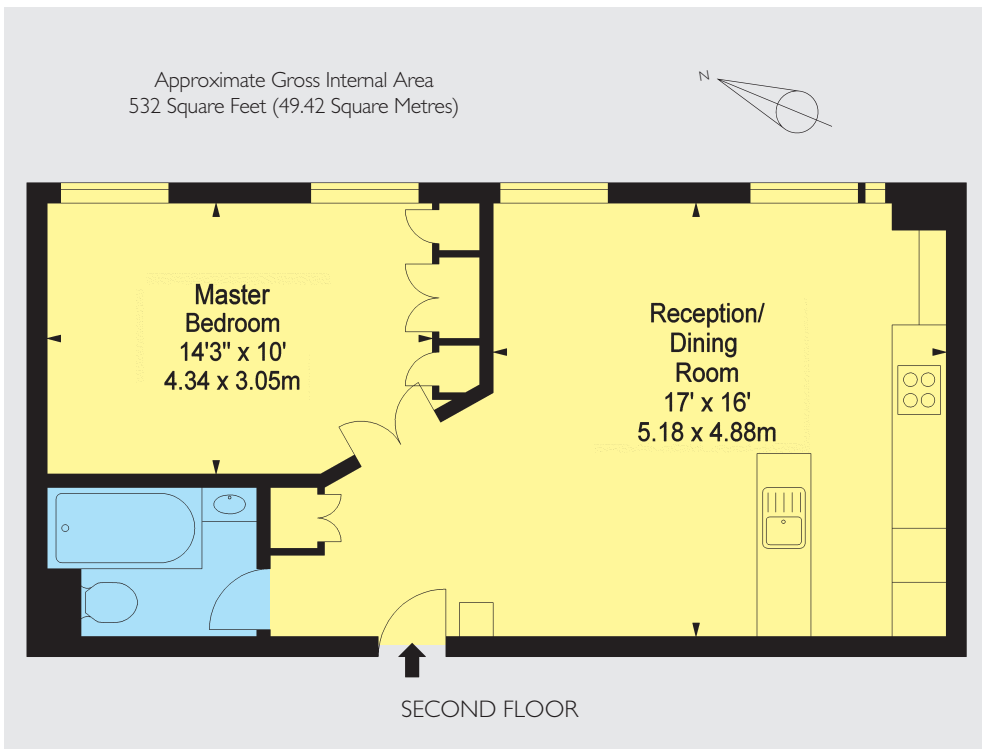


A PERFECT PARK LANE PIED-À-TERRE, SET ON THE SECOND FLOOR OF THIS PRESTIGIOUS PORTERED APARTMENT BLOCK, ONLY MOMENTS FROM THE OPEN SPACES OF HYDE PARK.



This bright one Bedroom apartment is presented in good condition and is quietly situated on the Dunraven Street side of this portered building. The property benefits from a large open plan Reception/Dining Room, Master Bedroom with ample storage and separate modern Bathroom. The principal rooms have views onto Dunraven Street, making it the ideal Mayfair base.

Avenfield House was erected in 1959-61 to designs by Irish architects, Herbert Wills and William Kaula. It replaces seven period homes, some of which were badly bombed during the Second World War. Avenfield House is accessed from both Dunraven Street and Park Lane, further benefiting from recently refurbished common parts, large modern lift and 24 hour portage.



ACCOMMODATION

- Open plan Reception/Dining Room
- Master Bedroom
- Bathroom
- 532 Square Feet
- EPC Band: D

TERMS

Lease Length: Approximately 42 Years Remaining
 Service Charge: Approximately £2,500 Per Quarter
 Ground Rent: £100 Per Annum
 Price: £995,000

Wetherell have no authority to make or give any representations or warranties in relation to the property. These particulars do not form part of any offer or contract and must not be relied upon as statements or representations of fact. Any areas, measurements or distances are approximate. The text, photographs and plans are for guidance only and are not necessarily comprehensive. It should not be assumed that the property has all the necessary planning, building regulation or other consents and Wetherell have not tested any services, equipment or facilities. Purchasers must satisfy themselves by inspection or otherwise. Energy Efficiency Rating: Band D. September 2017



Sole Agent



102 Mount Street · London · W1K 2TH
 T: 020 7529 5566 E: sales@wetherell.co.uk
 wetherell.co.uk

NO-ONE KNOWS MAYFAIR BETTER THAN WETHERELL