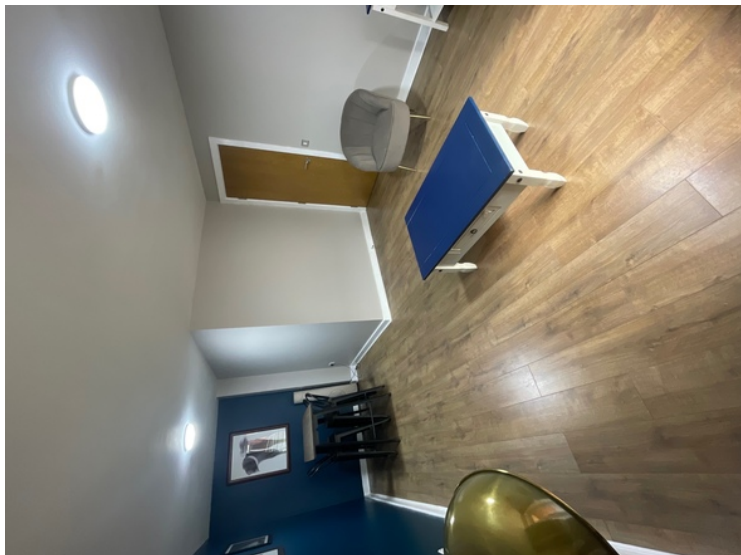
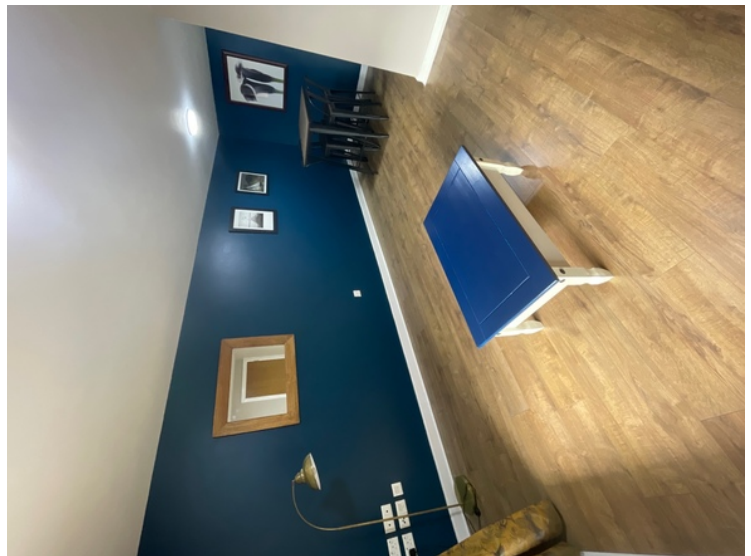



Warstone Lane, Jewellery Quarter, B18
£1,150 per month, For long let



Greystone Lettings are pleased to offer this spacious 2 bedroom apartment located in the Heritage Court Development in the heart of the Jewellery Quarter





Energy Efficiency Rating		
	Current	Potential
Very energy efficient - lower running costs		
(92-100) A		
(81-91) B	83	87
(69-80) C		
(55-68) D		
(39-54) E		
(21-38) F		
(1-20) G		
Not energy efficient - higher running costs		
England, Scotland & Wales	EU Directive 2002/91/EC 	

Greystone Lettings give notice to anyone reading these particulars that: (i) these particulars do not constitute part of an offer or contract; (ii) these particulars and any pictures or plans represent the opinion of the author and are given in good faith for guidance only and must not be construed as statements of fact; (iii) nothing in the particulars shall be deemed a statement that the property is in good condition otherwise; we have not carried out a structural survey of the property and have not tested the services, appliances or specified fittings.

Long Description

This apartment offers plenty of space throughout with 2 double bedrooms and the master room having the advantage of an en-suite with bath.

The lounge has a dining area with living space which leads out onto a spacious balcony overlooking into the courtyard.

Separate fully fitted kitchen which includes appliances such as a dishwasher, fridge freezer, washer drier, hob and built in oven.

There is also a guest shower room which includes a WC, hand basin with fitted cupboard unit space and heated towel rail.

An excellent apartment located in one of Birmingham`s most popular areas. Easy access to the local train station and the city centre. Excellent road links to the A38 and Motorways.

Concierge

Allocated secure parking

St Pauls Square is within a short walking distance.

Available now