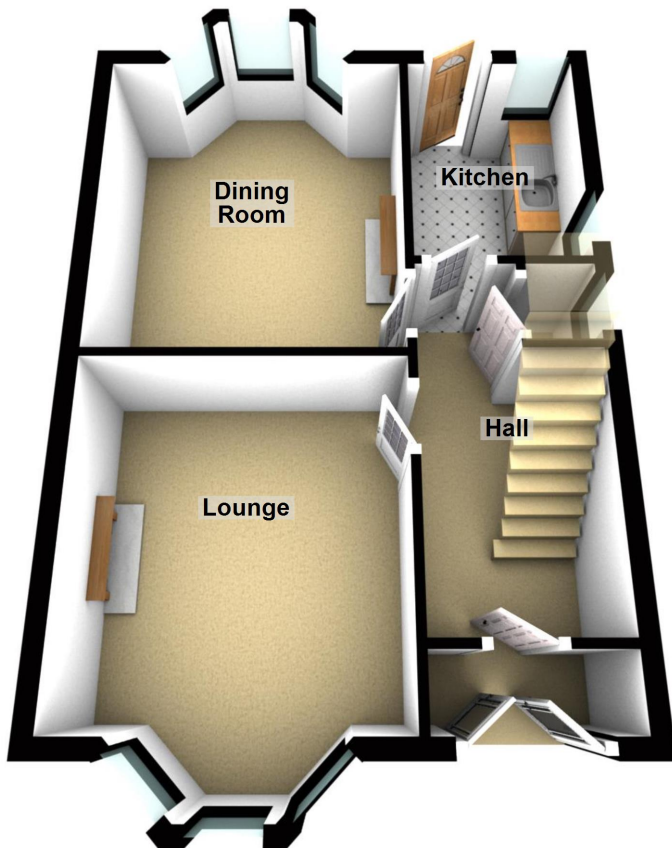




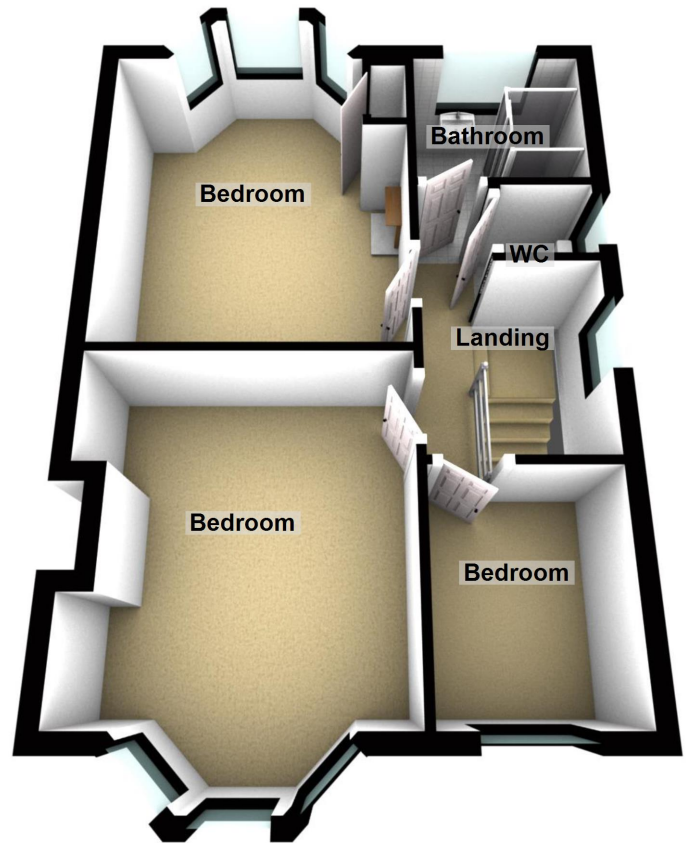
- * Book A Viewing Online Now;
Visit www.logicstates.co.uk
- * Three Bedroom Semi Detached House
 - * Two Reception Rooms
 - * Rear Garden & Front Garden
 - * Shared Drive



Ground Floor

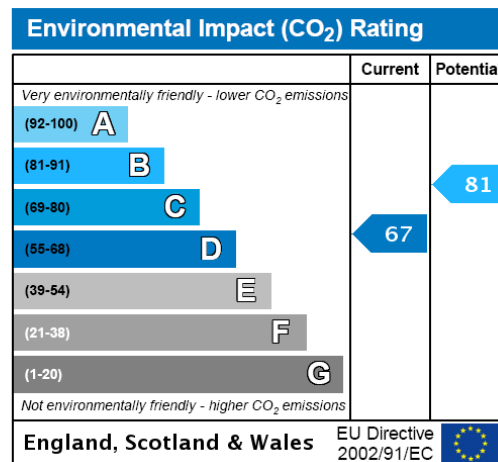
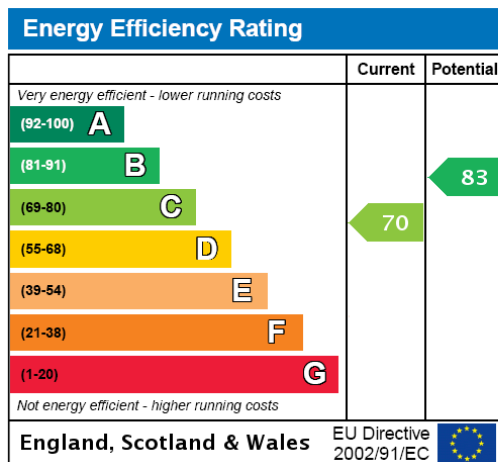


First Floor



St Matthews Avenue, Liverpool

These particulars do not form part of any offer or contract and must not be relied upon as statements or representations of fact. Any areas, measurements or distances are approximate. The text, photographs and plans are for guidance only and are not necessarily comprehensive. It should not be assumed that the property has all the necessary planning, building regulation or other consents and we have not tested services, equipment or facilities. Purchasers must satisfy themselves by inspection or otherwise.



Book A Viewing Online Now;
Visit www.logicstates.co.uk

Accommodation Comprises Of;

Ground Floor:

Porch Leading On To Entrance Hall

13'6" x 5'8" - Entrance Hall With Stairs to First Floor

13'8" x 11'2" - Lounge With Original Fireplace & Wooden Flooring

10'8" x 13'9" - Sitting Room With Original Fireplace And Wooden Flooring

8'9" x 6'8" - Kitchen With Access to The Rear Garden

First Floor:

14'3" x 10'9" - Bedroom One

14'4" x 10'8" - Bedroom Two

6'3" x 7'9" - Bedroom Three

6'3" x 7'9" - Bathroom

2'7" x 2'7" - Seperate W/C

Exterior:

Property Has A Shared Drive

Rear Garden With Terraced Area

Front Terraced Garden

These particulars do not form part of any offer or contract and must not be relied upon as statements or representations of fact. Any areas, measurements or distances are approximate. The text, photographs and plans are for guidance only and are not necessarily comprehensive. It should not be assumed that the property has all the necessary planning, building regulation or other consents and we have not tested services, equipment or facilities. Purchasers must satisfy themselves by inspection or otherwise.