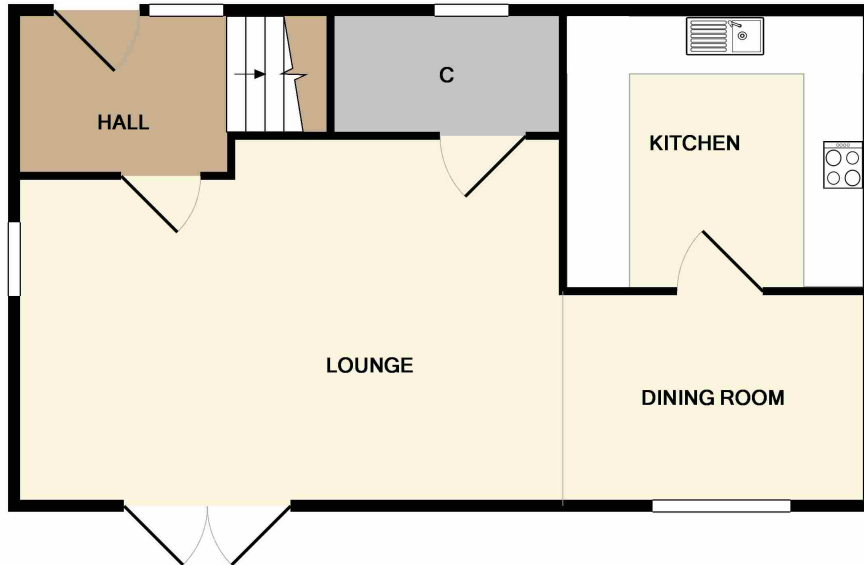


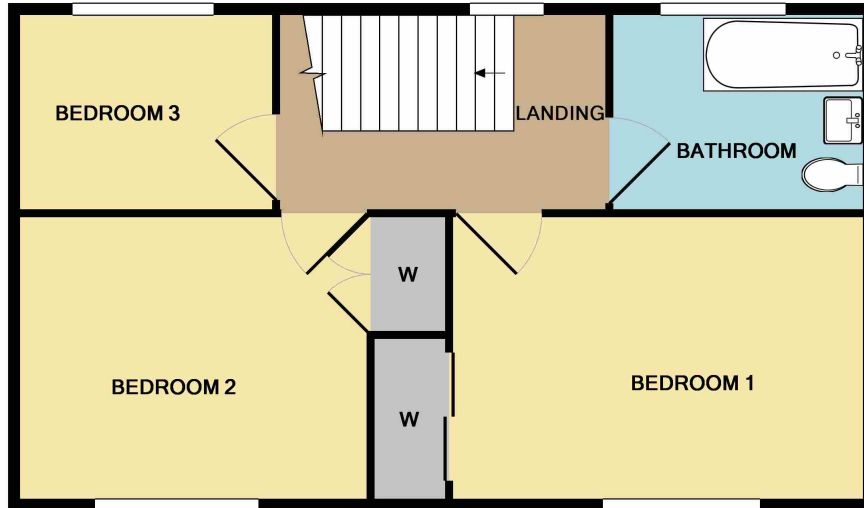


A three bedroom family home with gardens to front and rear, driveway and garage. Open plan living area, giving the property a light airy feel through out.





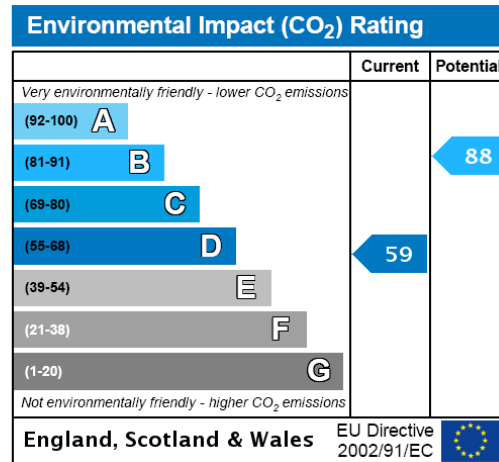
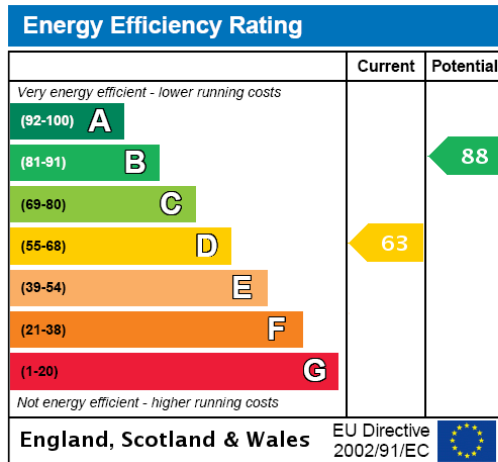
GROUND FLOOR



1ST FLOOR

Whilst every attempt has been made to ensure the accuracy of the floor plan contained here, measurements of doors, windows, rooms and any other items are approximate and no responsibility is taken for any error, omission, or mis-statement. This plan is for illustrative purposes only and should be used as such by any prospective purchaser. The services, systems and appliances shown have not been tested and no guarantee as to their operability or efficiency can be given.
Made with Metropix ©2017

These particulars do not form part of any offer or contract and must not be relied upon as statements or representations of fact. Any areas, measurements or distances are approximate. The text, photographs and plans are for guidance only and are not necessarily comprehensive. It should not be assumed that the property has all the necessary planning, building regulation or other consents and we have not tested services, equipment or facilities. Purchasers must satisfy themselves by inspection or otherwise.



This well appointed three bedroom family home has been exceptionally well maintained and presents well through out. The current owners have upgraded both the kitchen and family bathroom, installing bright modern fittings giving a contemporary finish. There is a generous secluded garden to the rear with patio and separate barbecue area. To the front is a landscaped front garden driveway and garage.

Lounge - 14'6 x 11'6 - Double glazed patio doors to rear, double glazed window to side, radiator, laminate flooring, storage cupboard, TV point, BT point.

Dining Room - 9' x 6'11 - Double glazed window to rear, laminate flooring, radiator.

Kitchen - 8'9 x 7'7 - Range of eye and base level units, laminate flooring, roll edge work tops, inset sink and gas hob, extractor hood over. Integrated double oven, fridge, freezer and dish washer, space for washing machine. Double glazed window to front.

Hallway - Door to front, double glazed window to front, radiator, laminate flooring, stairs to first floor.

Landing - Double glazed window to front.

Bedroom 1 - 11'1 x 7'11 - Fitted wardrobe with sliding mirror doors, double glazed window to rear, radiator.

Bedroom 2 - 10'4 x 7'6 - Built in wardrobe, radiator, double glazed window to rear.

Bedroom 3 - 7'3 x 6'11 - Double glazed window to front, radiator.

Family Bathroom - Tiling to walls and floor, chrome ladder style heated towel rail, vanity sink over storage units, paneled bath with shower over, double glazed window to front.

Garage - Power and light with single up and over door to front, pedestrian door to side for garden access.

These particulars do not form part of any offer or contract and must not be relied upon as statements or representations of fact. Any areas, measurements or distances are approximate. The text, photographs and plans are for guidance only and are not necessarily comprehensive. It should not be assumed that the property has all the necessary planning, building regulation or other consents and we have not tested services, equipment or facilities. Purchasers must satisfy themselves by inspection or otherwise.