

SOUTH PARK HILL ROAD

SOUTH CROYDON



£595,000
FREEHOLD



SOUTH PARK HILL ROAD



- Town House
- Integral Garage
- Four Double Bedrooms
- Additional Parking Space
- Close To South Croydon Train Station

A four bedroom town house with integral garage located close to all amenities, schools and public transport. The property benefits from nearly 1500 square feet of living space and externally has off street parking, garage and 80' garden.

SOUTH PARK HILL ROAD

Top Move Estate Agents are delighted to bring to the market this well presented four bedroom town house property located in this popular residential road in South Croydon. The property consists of ground floor with integral garage, kitchen and WC. The first floor has a 17' L shaped lounge, two bedrooms, and shower room with WC. Finally, the top floor consists of two bedrooms, one of those being the master with built in wardrobes and ensuite bathroom and also the main family bathroom.

Overall the property is in a good condition but still offers enough scope to be able to put your stamp firmly on it. Located on South Park Hill Road, the property is well located for South Croydon train station, bus routes and several very good local schools, both private and state.

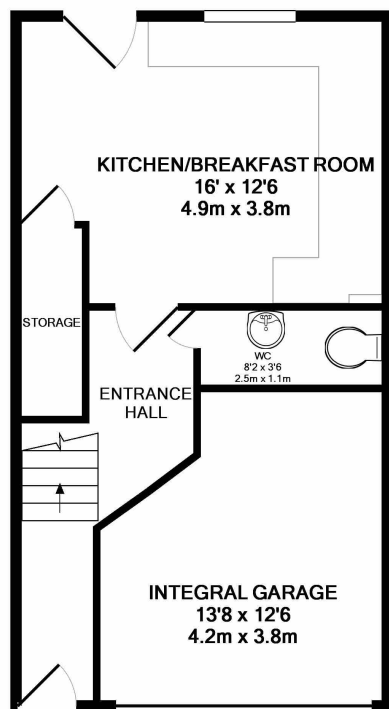
£595,000

FREEHOLD

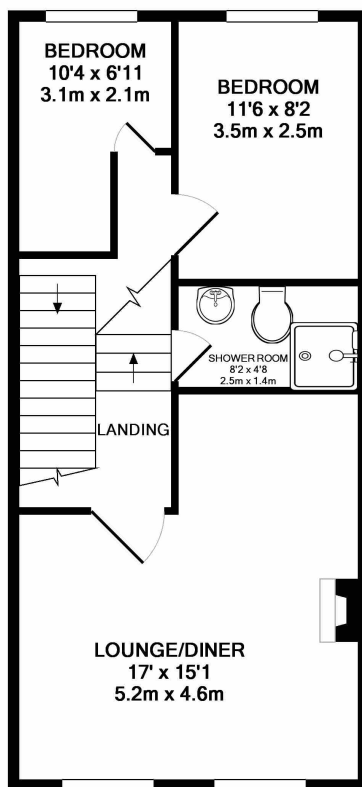
These particulars do not form part of any offer or contract and must not be relied upon as statements or representations of fact. Any areas, measurements or distances are approximate. The text, photographs and plans are for guidance only and are not necessarily comprehensive. It should not be assumed that the property has all the necessary planning, building regulation or other consents and we have not tested any services, equipment or facilities. Purchasers must satisfy themselves by inspection or otherwise.



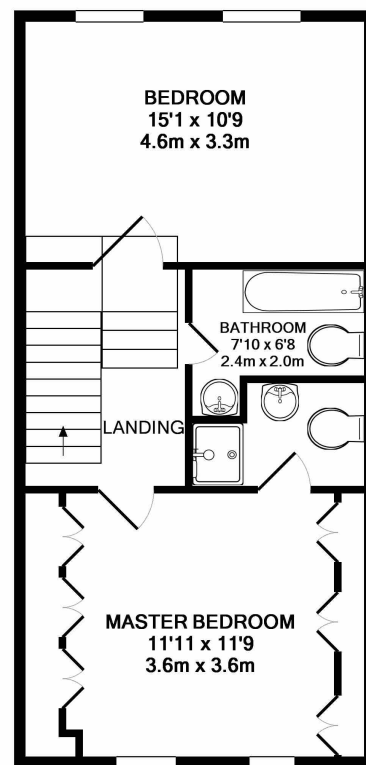
SOUTH PARK HILL ROAD



GROUND FLOOR
APPROX. FLOOR
AREA 476 SQ.FT.
(44.2 SQ.M.)



1ST FLOOR
APPROX. FLOOR
AREA 500 SQ.FT.
(46.5 SQ.M.)



2ND FLOOR
APPROX. FLOOR
AREA 485 SQ.FT.
(45.1 SQ.M.)

27A SOUTH PARK HILL ROAD CROYDON CR2 7DZ
TOTAL APPROX. FLOOR AREA 1461 SQ.FT. (135.8 SQ.M.)

Whilst every attempt has been made to ensure the accuracy of the floor plan contained here, measurements of doors, windows, rooms and any other items are approximate and no responsibility is taken for any error, omission, or mis-statement. This plan is for illustrative purposes only and should be used as such by any prospective purchaser. The services, systems and appliances shown have not been tested and no guarantee as to their operability or efficiency can be given
Made with Metropix ©2017

£595,000

FREEHOLD

These particulars do not form part of any offer or contract and must not be relied upon as statements or representations of fact. Any areas, measurements or distances are approximate. The text, photographs and plans are for guidance only and are not necessarily comprehensive. It should not be assumed that the property has all the necessary planning, building regulation or other consents and we have not tested any services, equipment or facilities. Purchasers must satisfy themselves by inspection or otherwise.

 *There's no move like a top move!*
Top Move
www.top-moveuk.com