

**AMBASSADOR COURT, Century Close, HENDON, NW4**  
**£1,295,000, Share of Freehold**



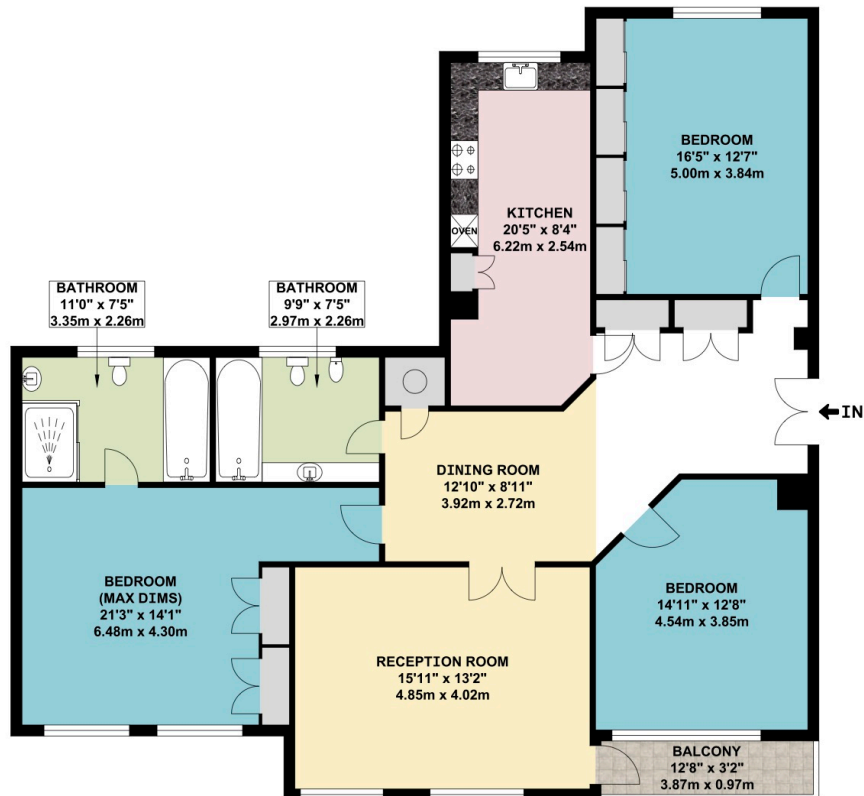
NEWLY REDECORATED 1500 SQ FT APARTMENT IN THE PRESTIGIOUS BLOCK, AMBASSADOR COURT, ON 2ND FLOOR WITH LIFT. THE APARTMENT HAS A BRAND NEW KITCHEN, 2 BATHROOMS (1 EN SUITE) 3 LARGE BEDROOMS AND BALCONY.







**AMBASSADOR COURT CENTURY CLOSE  
LONDON NW4**



**SECOND FLOOR FLAT**

APPROX. GROSS INTERNAL FLOOR AREA 1517.71 SQ. FT / 141.00 SQ. M

APPROX. GROSS INTERNAL FLOOR AREA INCLUDING THE BALCONY 1560.76 SQ. FT / 145.00 SQ. M

WHILST EVERY ATTEMPT HAS BEEN MADE TO ENSURE THE ACCURACY OF THE FLOOR PLAN CONTAINED HERE,  
MEASUREMENTS OF DOORS, WINDOWS, ROOMS AND ANY OTHER ITEMS ARE APPROXIMATE AND NO RESPONSIBILITY  
IS TAKEN FOR ANY ERROR, OMISSION, OR MIS-STATEMENT. THIS PLAN IS FOR ILLUSTRATIVE PURPOSES ONLY  
AND SHOULD BE USED AS SUCH, BY ANY PROSPECTIVE PURCHASER.  
FLOOR PLANS ARE NOT DONE TO "SCALE".

Dreamview Estates give notice to anyone reading these particulars that: (i) these particulars do not constitute part of an offer or contract; (ii) these particulars and any pictures or plans represent the opinion of the author and are given in good faith for guidance only and must not be construed as statements of fact; (iii) nothing in the particulars shall be deemed a statement that the property is in good condition otherwise; we have not carried out a structural survey of the property and have not tested the services, appliances or specified fittings.

## Long Description

AMBASSADOR COURT,CENTURY CLOSE, OFF BRENT STREET, HENDON NW4

A STUNNING, REFURBISHED 3 DOUBLE BEDROOM 1500 SQ FT/ 141 SQ MT APARTMENT IDEALLY LOCATED ON THE SECOND FLOOR IN THIS PRESTIGIOUS BLOCK IN THE HEART OF HENDON WITH LIFT.

THE APARTMENT HAS A NEW KITCHEN, 3 DOUBLE BEDROOMS AND 2 NEWLY FITTED MODERN BATHROOMS (ONE ENSUITE).

IN ADDITION TO THE LIVING SPACE, THIS GATED DEVELOPMENT BENEFITS FROM WELL MAINTAINED PRIVATE GARDENS AND OFF STREET PARKING.