

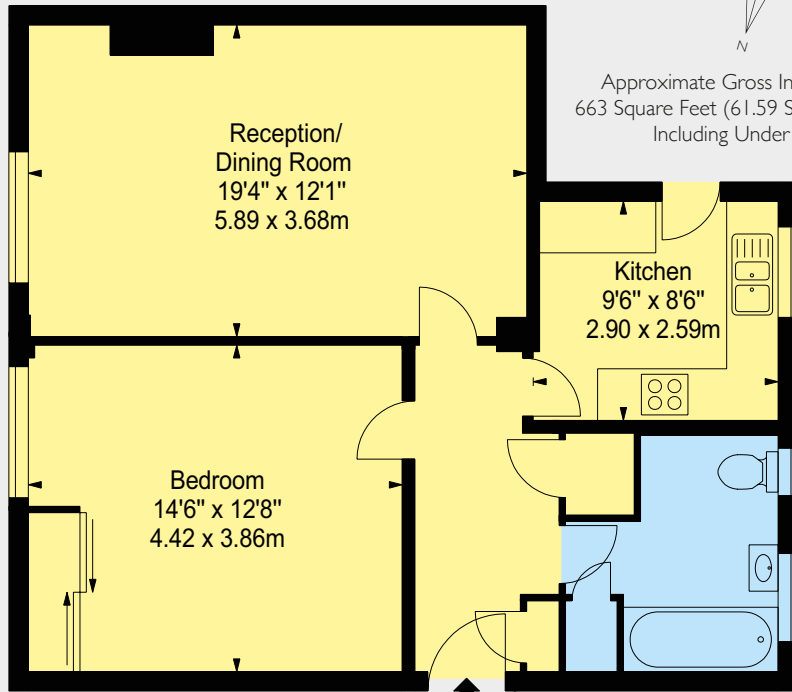
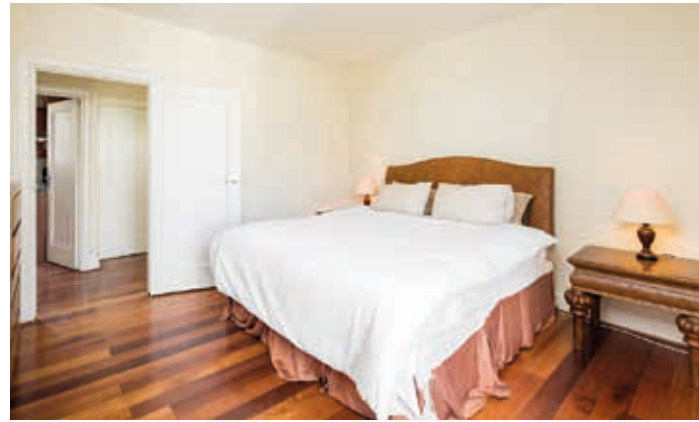


CHESTERFIELD GARDENS

MAYFAIR W1



A SEVENTH FLOOR ONE BEDROOM APARTMENT OF 663 SQUARE FEET WITHIN THIS POPULAR PURPOSE BUILT APARTMENT BUILDING WHERE THE RESIDENTS OWN THE FREEHOLD AND ARE SERVICED BY AN IN HOUSE MANAGEMENT TEAM AND 24 HOUR PORTER



Approximate Gross Internal Area
663 Square Feet (61.59 Square Metres)
Including Under 1.5m

SEVENTH FLOOR

This large one Bedroom apartment boasts good living space and fantastic natural light throughout, with a large Master Bedroom Suite and open plan Reception/Dining Room making for the perfect Mayfair Pied-à-Terre.

Chesterfield House is located in Chesterfield Gardens which is a quiet cul de sac off Curzon Street and only moments away from the open spaces of Hyde Park and the vibrant Shepherd Market.

ACCOMMODATION

- Reception/Dining Room
- Kitchen
- Master Bedroom
- Bathroom
- Entrance Hall
- Lift
- 24 Hour Porter
- Cloakroom
- 663 Square Feet
- EPC Band D

TERMS

Lease Length: Approximately 91 Years Remaining plus a Share of the Freehold
 Service Charge: £2,673.00 (Half Yearly)
 Ground Rent: Peppercorn
 Price: £1,400,000

Wetherell have no authority to make or give any representations or warranties in relation to the property. These particulars do not form part of any offer or contract and must not be relied upon as statements or representations of fact. Any areas, measurements or distances are approximate. The text, photographs and plans are for guidance only and are not necessarily comprehensive. It should not be assumed that the property has all the necessary planning, building regulation or other consents and Wetherell have not tested any services, equipment or facilities. Purchasers must satisfy themselves by inspection or otherwise. Energy Efficiency Rating: Band D. February 2018



Joint Sole Agent



102 Mount Street · London · W1K 2TH
 T: 020 7529 5566 E: sales@wetherell.co.uk
 wetherell.co.uk

NO-ONE KNOWS MAYFAIR BETTER THAN WETHERELL