



# CHARLES STREET



A superb one Bedroom Apartment located on a prime street in Mayfair Village.

**£575 PER WEEK**  
FURNISHED

**WETHERELL**  
MAYFAIR'S FINEST PROPERTIES

102 Mount Street · London · W1K 2TH  
T: 020 7529 5588 E: [rentals@wetherell.co.uk](mailto:rentals@wetherell.co.uk)  
[wetherell.co.uk](http://wetherell.co.uk)

NO-ONE KNOWS MAYFAIR BETTER THAN WETHERELL





## CHARLES STREET



LARGE OPEN PLAN KITCHEN/RECEPTION • NEWLY RENOVATED • LIFT

NO-ONE KNOWS MAYFAIR BETTER THAN WETHERELL





## CHARLES STREET

A superb one bedroom apartment located on a prime street in Mayfair Village.

Refurbished in a modern style this lower ground apartment has a large open plan reception with separate study area whilst the whole flat spans an impressive 626 square feet.

Charles Street is home to many Mayfair mansions developed in the 18th century with many now listed by English Heritage.

- \* Large Open Plan Kitchen/Reception
- \* Double Bedroom
- \* En Suite Bathroom
- \* Study Area
- \* Newly Renovated
- \* Lift
- \* 626sq.ft.

\*Wetherell & Co. (Mayfair) Ltd. is a member of the RICS Client money protection Scheme, and also a member of the NAEA, ARLA Propertymark and the property Ombudsman which are Redress schemes.

Any Tenancy that falls outside of the housing act will be subject to Tenant fees. You can find out more details on the Wetherell website or by contacting us directly.

**£575 PER WEEK**  
FURNISHED

Wetherell have no authority to make or give any representations or warranties in relation to the property. These particulars do not form part of any offer or contract and must not be relied upon as statements or representations of fact. Any areas, measurements or distances are approximate. The text, photographs and plans are for guidance only and are not necessarily comprehensive. It should not be assumed that the property has all the necessary planning, building regulation or other consents and Wetherell have not tested any services, equipment or facilities. Purchasers must satisfy themselves by inspection or otherwise. 2020

**WETHERELL**  
MAYFAIR'S FINEST PROPERTIES

102 Mount Street · London · W1K 2TH  
T: 020 7529 5588 E: [rentals@wetherell.co.uk](mailto:rentals@wetherell.co.uk)  
[wetherell.co.uk](http://wetherell.co.uk)

NO-ONE KNOWS MAYFAIR BETTER THAN WETHERELL



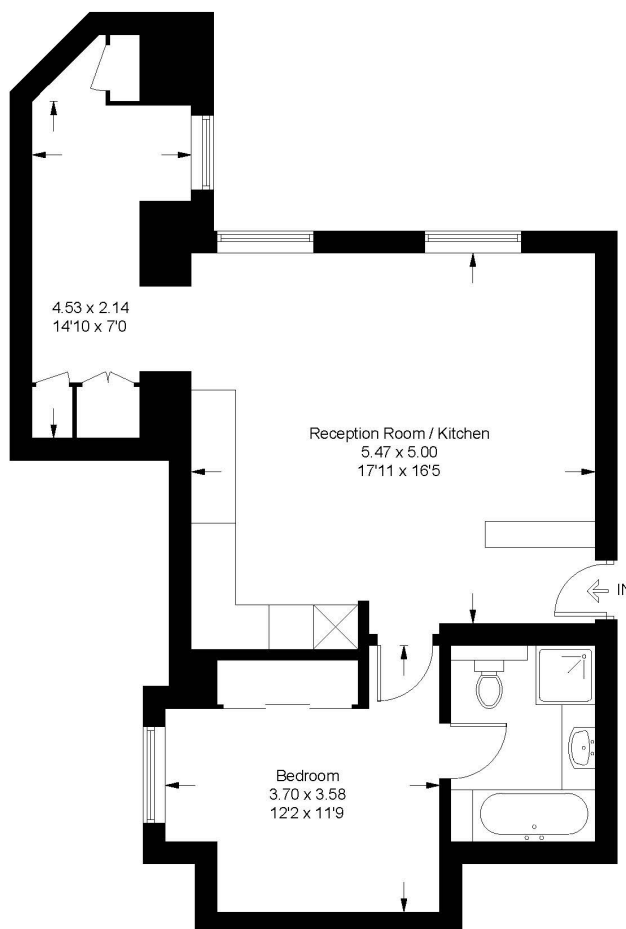




## CHARLES STREET

### Charles Street, W1J

Approximate Gross Internal Area = 58.2 sq m / 626 sq ft



### Lower Ground Floor

Illustration for identification purposes only, measurements are approximate, not to scale. FloorplansUsketch.com © 2016 (ID290420)

Wetherell have no authority to make or give any representations or warranties in relation to the property. These particulars do not form part of any offer or contract and must not be relied upon as statements or representations of fact. Any areas, measurements or distances are approximate. The text, photographs and plans are for guidance only and are not necessarily comprehensive. It should not be assumed that the property has all the necessary planning, building regulation or other consents and Wetherell have not tested any services, equipment or facilities. Purchasers must satisfy themselves by inspection or otherwise. 2020

## WETHERELL

MAYFAIR'S FINEST PROPERTIES

102 Mount Street · London · W1K 2TH  
T: 020 7529 5588 E: [rentals@wetherell.co.uk](mailto:rentals@wetherell.co.uk)  
[wetherell.co.uk](http://wetherell.co.uk)

NO-ONE KNOWS MAYFAIR BETTER THAN WETHERELL

