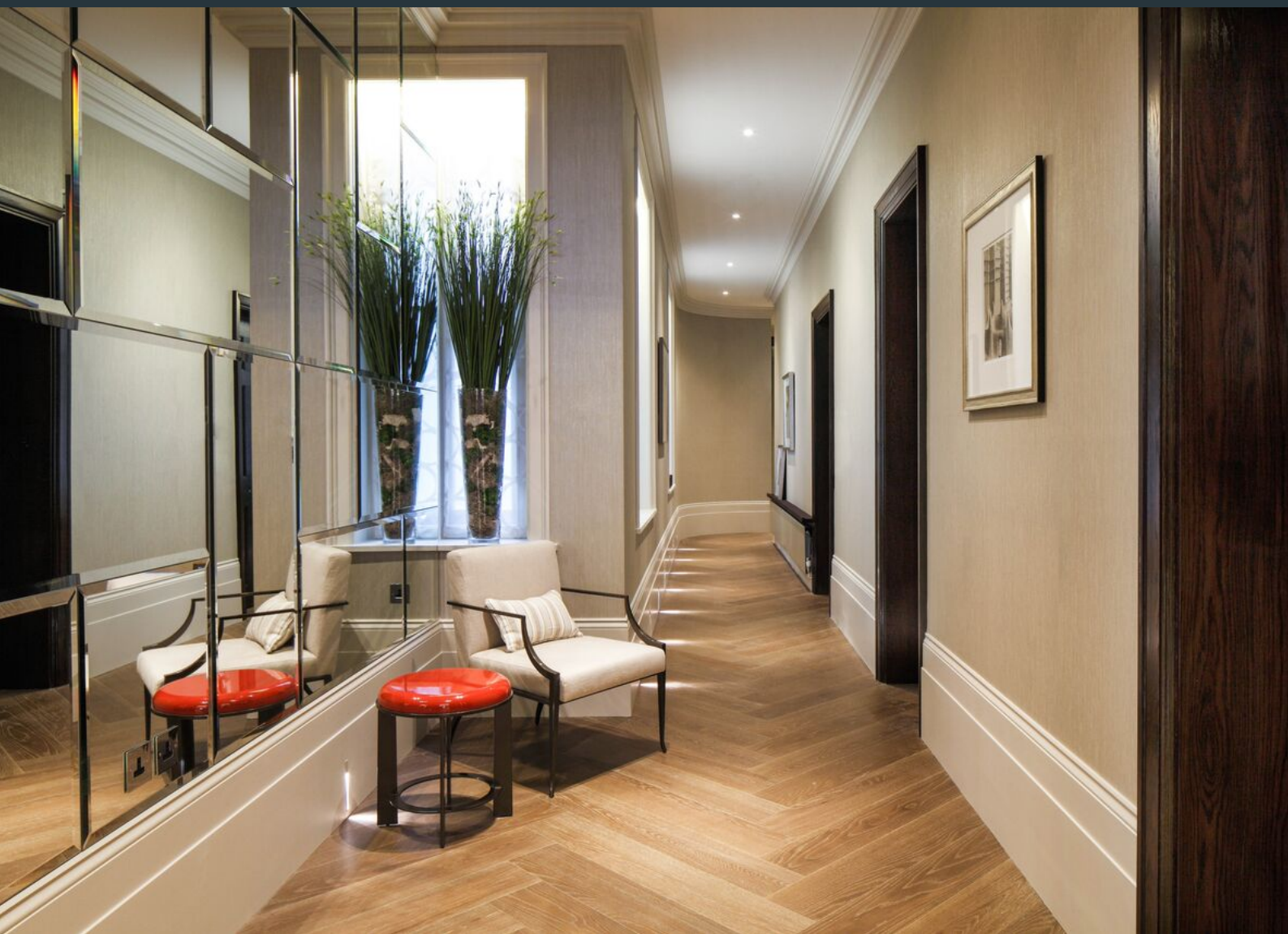


Mount Street
London, W1K

Leasehold
£6,750,000



Rescorp offer for sale a stylish and newly refurbished south facing two bedroom apartment spanning 1,770 sq ft. The property affords iconic views overlooking Mount Street and the open space of Berkeley square.



58 | ACACIA ROAD | ST JOHNS WOOD | NW8 6AG
Tel: 020 3348 8000

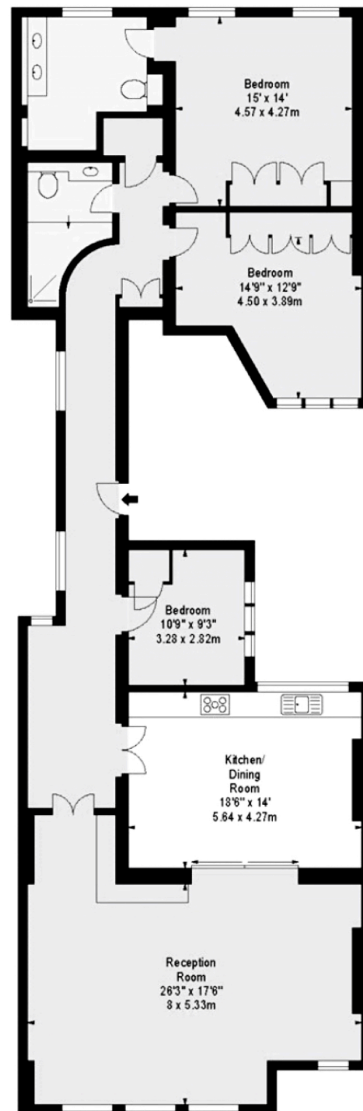
RESCORP

RESCORP

FLAT 1 4 MOUNT STREET W1

APPROX. GROSS INTERNAL AREA *
1770 Ft² - 164.43 M²

Illustration For Identification Only. Not to Scale
All Calculations Include Any/All Areas Under 1.5m Head Height
* As Defined by RICS - Code of Measuring Practice



FIRST FLOOR



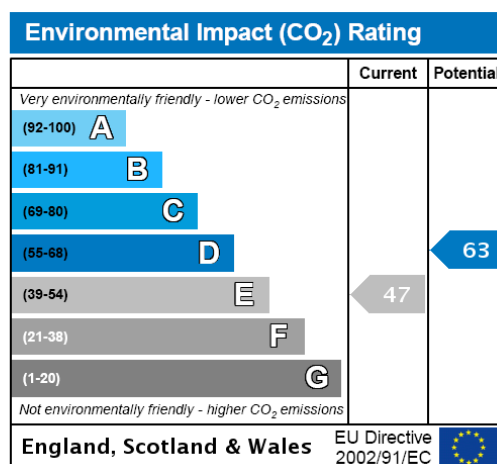
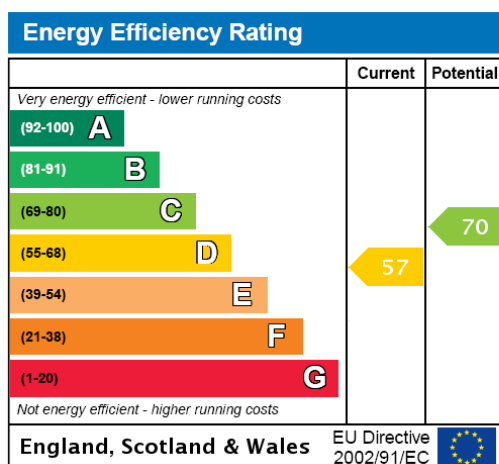
www.bkrinquiries.co.uk
T: 0845 257 2023
© BKR 2015

These particulars do not form part of any offer or contract and must not be relied upon as statements or representations of fact. Any areas, measurements or distances are approximate. The text, photographs and plans are for guidance only and are not necessarily comprehensive. It should not be assumed that the property has all the necessary planning, building regulation or other consents and we have not tested services, equipment or facilities. Purchasers must satisfy themselves by inspection or otherwise.

58 | ACACIA ROAD | ST JOHNS WOOD | NW8 6AG
Tel: 020 3348 8000

RESCORP

RESCORP



Rescorp offer for sale a stylish and newly refurbished south facing two bedroom apartment spanning 1,770 sq ft. The property affords iconic views overlooking Mount Street and the open space of Berkeley square.

A seamless blend of quality and sophistication, the spacious drawing room benefits from exceptional ceiling heights, an imposing marble fireplace and oak herringbone floors. Sliding doors reveal a fully fitted kitchen and dining room with seating for up to ten people.

The principal suite features large built-in wardrobes and a white marble en-suite shower room. The second bedroom benefits from built-in storage and has the use of a separate shower room.

A study/TV snug or third bedroom is also located off the hallway allowing living flexibility.

Mount Street is just moments away some of London's finest restaurants and boutiques.

These particulars do not form part of any offer or contract and must not be relied upon as statements or representations of fact. Any areas, measurements or distances are approximate. The text, photographs and plans are for guidance only and are not necessarily comprehensive. It should not be assumed that the property has all the necessary planning, building regulation or other consents and we have not tested services, equipment or facilities. Purchasers must satisfy themselves by inspection or otherwise.