

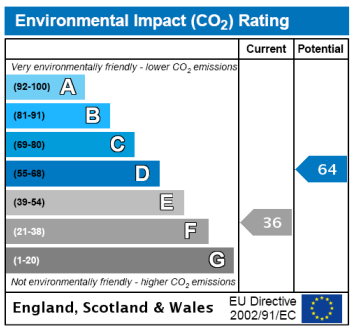
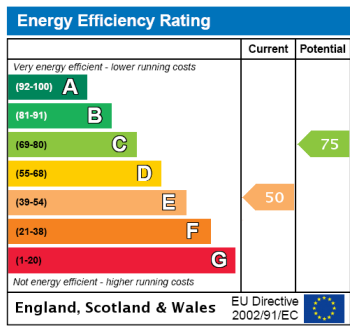


## Hebron Road, W6 £1,000 per week, For long let



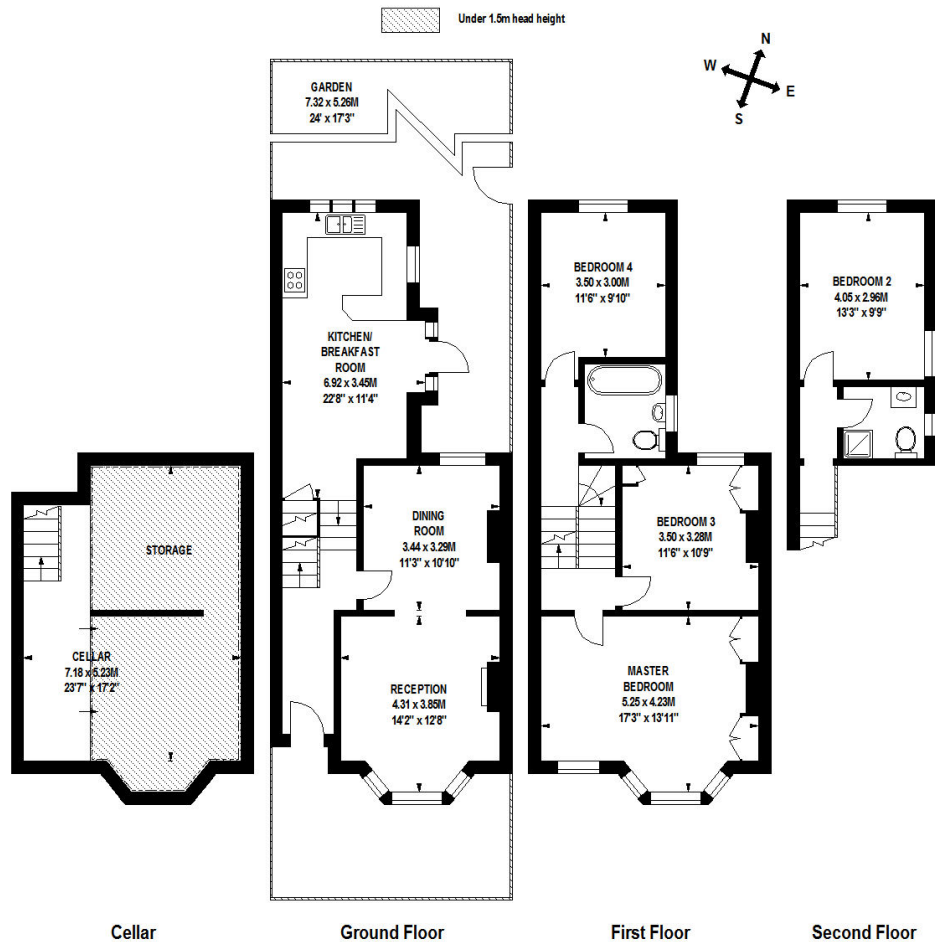
A wonderful 4 double bedroom end of terrace house.





Hebron Road, W6  
 Approximate gross internal area  
 171.5 sq m / 1846 sq ft  
 Including Storage of approx  
 27.5 sq m / 296 sq ft

Approximate area of outside space  
 67 sq m / 721 sq ft



Floor Plan produced for Finlay Brewer by Mays Floorplans ©. Tel 020 3397 4594  
 Illustration for identification purposes only, not to scale  
 All measurements are maximum, and include wardrobes and window bays where applicable

Finlay Brewer give notice to anyone reading these particulars that: (i) these particulars do not constitute part of an offer or contract; (ii) these particulars and any pictures or plans represent the opinion of the author and are given in good faith for guidance only and must not be construed as statements of fact; (iii) nothing in the particulars shall be deemed a statement that the property is in good condition otherwise; we have not carried out a structural survey of the property and have not tested the services, appliances or specified fittings.

## Long Description

A wonderful 4 double bedroom end of terrace house, with an elegant double reception, new bespoke kitchen with breakfast bar and dining area, separate utility room, 2 bathrooms and picturesque garden. Located in the heart of Brackenbury Village, just a few minutes walk from the underground at Hammersmith and Goldhawk Road tube station as well as Westfield London. Available now.

Administration fee £150 inc VAT per person, other costs apply. For more information go to: [www.finlaybrewer.co.uk/property-management/tenant-fees-and-costs/](http://www.finlaybrewer.co.uk/property-management/tenant-fees-and-costs/)