



**Upper Mall, W6**  
**£1,500 per week, For long let**



A wonderful opportunity to live in a beautiful, contemporary house right by the river.

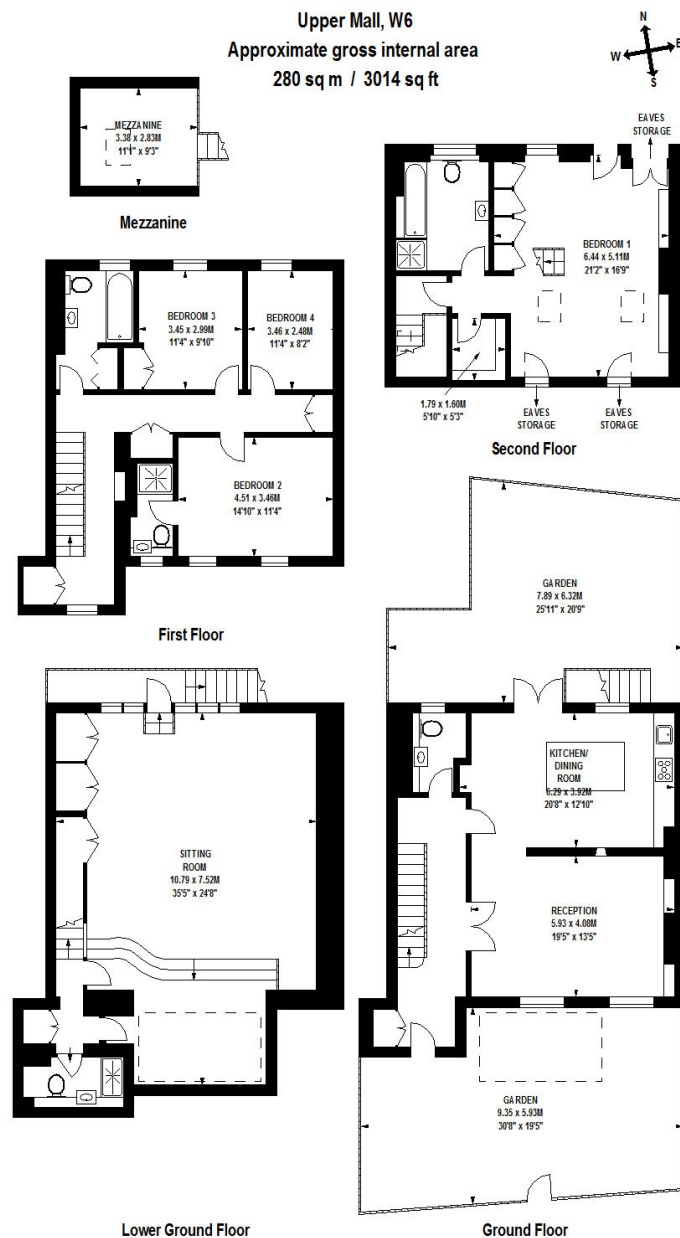






Energy Efficiency Rating		Current	Potential
Very energy efficient - lower running costs			
(92-100)	A		
(81-91)	B		
(69-80)	C		
(55-68)	D		
(39-54)	E		
(21-38)	F		
(1-20)	G		
Not energy efficient - higher running costs			
		67	72
England, Scotland & Wales		EU Directive 2002/91/EC	

Environmental Impact (CO <sub>2</sub> ) Rating		Current	Potential
Very environmentally friendly - lower CO <sub>2</sub> emissions			
(92-100)	A		
(81-91)	B		
(69-80)	C		
(55-68)	D		
(39-54)	E		
(21-38)	F		
(1-20)	G		
Not environmentally friendly - higher CO <sub>2</sub> emissions			
		58	62
England, Scotland & Wales		EU Directive 2002/91/EC	



Floor Plan produced for Finlay Brewer by Mays Floorplans © Tel 020 3397 4594  
Illustration for identification purposes only, not to scale  
All measurements are maximum, and include wardrobes and window bays where applicable

Finlay Brewer give notice to anyone reading these particulars that: (i) these particulars do not constitute part of an offer or contract; (ii) these particulars and any pictures or plans represent the opinion of the author and are given in good faith for guidance only and must not be construed as statements of fact; (iii) nothing in the particulars shall be deemed a statement that the property is in good condition otherwise; we have not carried out a structural survey of the property and have not tested the services, appliances or specified fittings.

## Long Description

A wonderful opportunity to live in a beautiful, contemporary house right by the river with 4 double bedrooms, 2 floors of living space, wood flooring throughout, 2 bathrooms, 2 shower rooms and 2 courtyard gardens. Unfurnished. Available 3rd July