

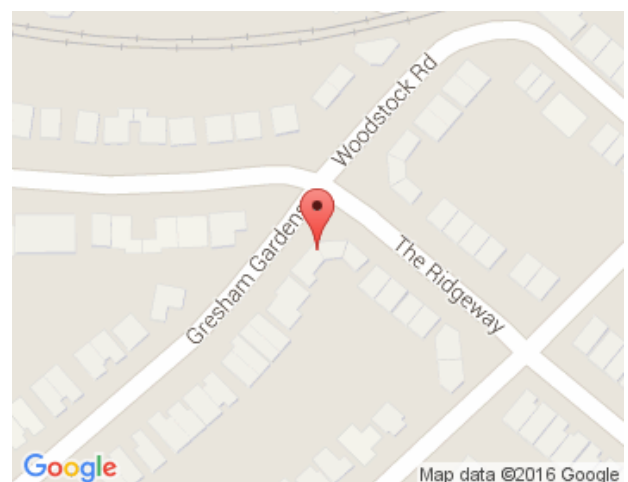
THE RIDGEWAY, GOLDERS GREEN, NW11 £1,550,000, Freehold



ANOTHER 1 SOLD BY DREAMVIEW ESTATES!

IMPRESSIVE DOUBLE FRONTED HOUSE FOR SALE

HUGE & IMPRESSIVE 7 BEDROOM HOUSE OF SOME 3211SQ FT SET OUT OVER 3 FLOORS ON THIS VERY BOLD, COMMANDING AND PROMINENT CORNER PLOT

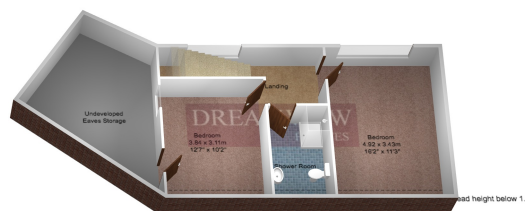




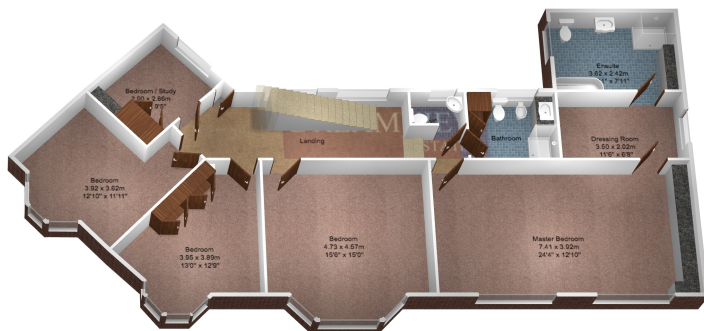
The Ridgeway



Ground Floor
Area: 132.7 m² ... 1429 ft²



Second Floor
Area: 42.2 m² ... 454 ft²



First Floor
Area: 123.4 m² ... 1328 ft²

Approx. Gross Internal Area: 298.3 m² ... 3211 ft² (excluding undeveloped eaves storage)

All measurements and areas are approximate only.
Dimensions are not to scale. This plan is for guidance
only and must not be relied upon as a statement of fact.
© Dreamview Estates Ltd

DREAMVIEW
ESTATES

Dreamview Estates give notice to anyone reading these particulars that: (i) these particulars do not constitute part of an offer or contract; (ii) these particulars and any pictures or plans represent the opinion of the author and are given in good faith for guidance only and must not be construed as statements of fact; (iii) nothing in the particulars shall be deemed a statement that the property is in good condition otherwise; we have not carried out a structural survey of the property and have not tested the services, appliances or specified fittings.

Long Description

ANOTHER 1 SOLD BY DREAMVIEW ESTATES!
ANOTHER 1 SOLD BY DREAMVIEW ESTATES!

THE RIDGEWAY, GOLDERS GREEN, NW11 8QN

IMPRESSIVE DOUBLE FRONTED HOUSE FOR SALE.

HUGE AND IMPRESSIVE 7 BEDROOM HOUSE OF SOME 3211 SQ FT/298 SQ MT IS SET OUT OVER 3 FLOORS ON THIS VERY BOLD, COMMANDING AND PROMINENT CORNER PLOT IN THE HEART OF CENTRAL GOLDERS GREEN AND WITHIN EASY REACH OF ALL AMENITIES

THE HOUSE OFFERS VERY SPACIOUS ACCOMMODATION WITH, PERHAPS, ONE OF THE LARGEST MASTER BEDROOMS AVAILABLE BEING SOME 24' X 13' WHICH ALSO HAS AN EN SUITE DRESSING ROOM AND BATHROOM

ALL THE OTHER BEDROOMS ARE OF A GOOD SIZE AND THERE IS EVEN SCOPE TO EXPAND THE TOP FLOOR FURTHER IF REQUIRED (STPP)

ON THE GROUND FLOOR ARE 2 LARGE RECEPTIONS AND A 19' X 11' KITCHEN/DINER PLUS A LARGE UTILITY ROOM BEHIND AND A GUEST CLOAKROOM

TO THE REAR THERE IS A PRETTY AND WELL KEPT SECLUDED GARDEN WHICH EXTENDS TO SOME 74'

AS YOU CAN SEE FROM THE PHOTOS THERE IS A VERY WIDE FRONTAGE WITH CARRIAGE DRIVE WHICH PROVIDES PARKING FOR AT LEAST 4 CARS IN FRONT OF THE INTEGRAL GARAGE

PRICE £1,550,000 FREEHOLD

COUNCIL TAX - BAND G (£2338.45- 2016/7)

PLEASE NOTE !!
VIEWING IS STRICTLY BY APPOINTMENT VIA THE OWNERS SOLE AGENTS

PLEASE CALL DREAMVIEW ESTATES ON 020 8455 0055