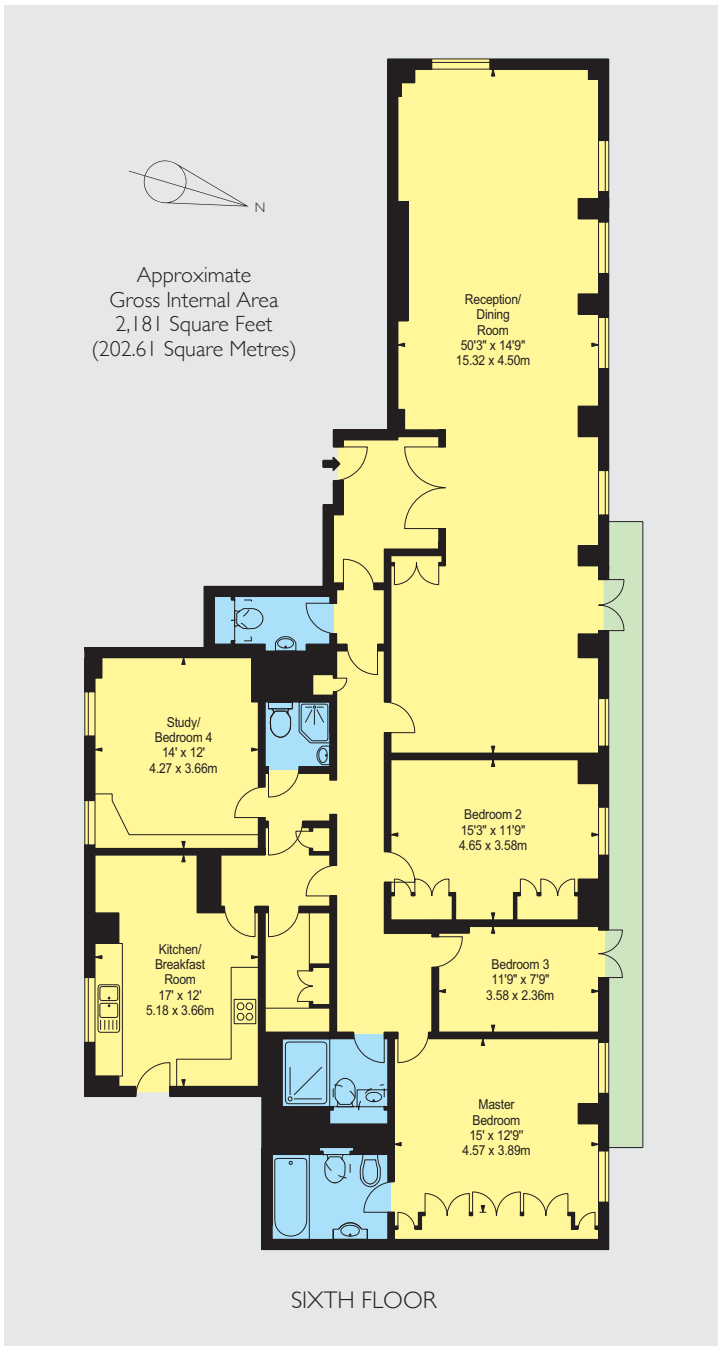


FOUNTAIN HOUSE PARK STREET

MAYFAIR W1



A FANTASTIC SIXTH FLOOR APARTMENT OF 2,181 SQ FT ON PARK LANE WITH VIEWS OF HYDE PARK, IN FOUNTAIN HOUSE WHICH IS ONE OF THE MOST POPULAR PORTERED BUILDINGS OF MAYFAIR



Found in good condition, this extremely spacious apartment has well balanced accommodation throughout. The apartment comprises a large double reception room with a door onto the balcony, an eat-in family kitchen, two guest bedrooms with two separate shower rooms and a fourth bedroom/study.

To the rear of the apartment is the master bedroom with en-suite bathroom and fantastic wardrobe space. The apartment also benefits from a 24 hour porter and lift access.

Located on Park Lane and Park Street, this property is surrounded by exclusive restaurants, bars, art galleries and boutiques - perfectly placed to enjoy all that Mayfair has to offer.

- Entrance Hall
- Kitchen
- Reception/Dining Room
- Master Bedroom with En-Suite Bathroom
- Two Guest Bedrooms
- Fourth Bedroom/Study
- Shower Room
- Two Cloakrooms
- Lift
- Porter
- Balcony
- 2,181 Sq Ft
- EPC Band: D

Leasehold: 83 years remaining
Service Charge: £17,405 per annum
Ground Rent: £500 per annum
Price: £5,850,000

Wetherell have no authority to make or give any representations or warranties in relation to the property. These particulars do not form part of any offer or contract and must not be relied upon as statements or representations of fact. Any areas, measurements or distances are approximate. The text, photographs and plans are for guidance only and are not necessarily comprehensive. It should not be assumed that the property has all the necessary planning, building regulation or other consents and Wetherell have not tested any services, equipment or facilities. Purchasers must satisfy themselves by inspection or otherwise. Energy Efficiency Rating: Band D. July 2018

Sole Agent



102 Mount Street · London · W1K 2TH
T: 020 7529 5566 E: sales@wetherell.co.uk
wetherell.co.uk