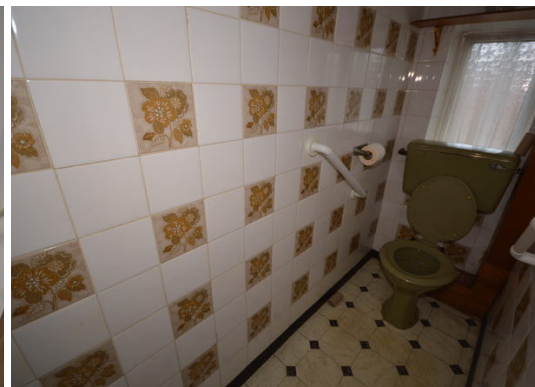
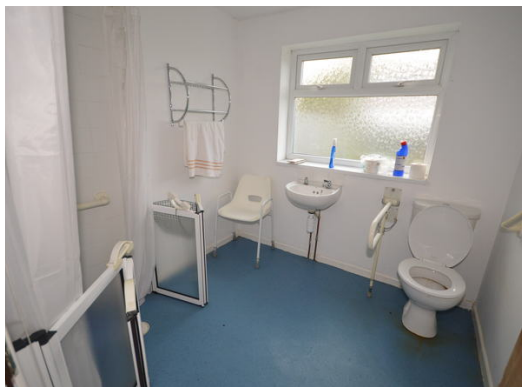


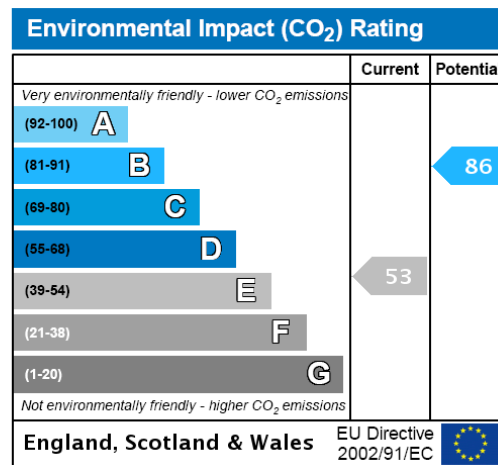
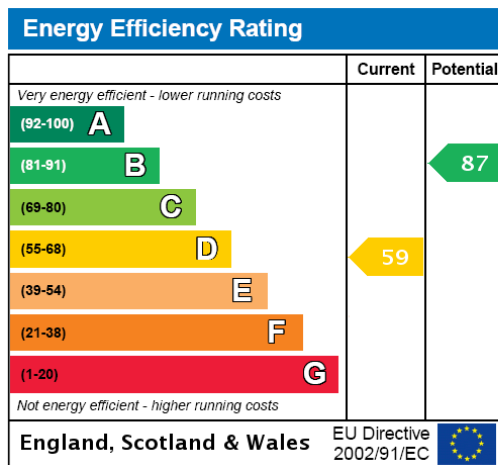


- Three Bedroom Mid Terrace House

- Two Bathrooms

- Front And Rear Gardens





Logic Are Offering For Sale This Three Bedroom Mid Terrace House

To Comprise;

Ground Floor:

Porch

Entrance Hall

Lounge

Downstairs Wet Room - 7'2" x 7'4"

Kitchen - 8'6" x 12'3"

First Floor:

Bedroom One - 14'0" x 9'3"

Bedroom Two - 6'0" x 10'6"

Bedroom Three - 8'5" x 11'8"

Bathroom - 5'5" x 4'6"

Separate Toilet - 5'5" x 4'6"

Exterior:

Front And Rear Gardens

To View Call Logic.

These particulars do not form part of any offer or contract and must not be relied upon as statements or representations of fact. Any areas, measurements or distances are approximate. The text, photographs and plans are for guidance only and are not necessarily comprehensive. It should not be assumed that the property has all the necessary planning, building regulation or other consents and we have not tested services, equipment or facilities. Purchasers must satisfy themselves by inspection or otherwise.