

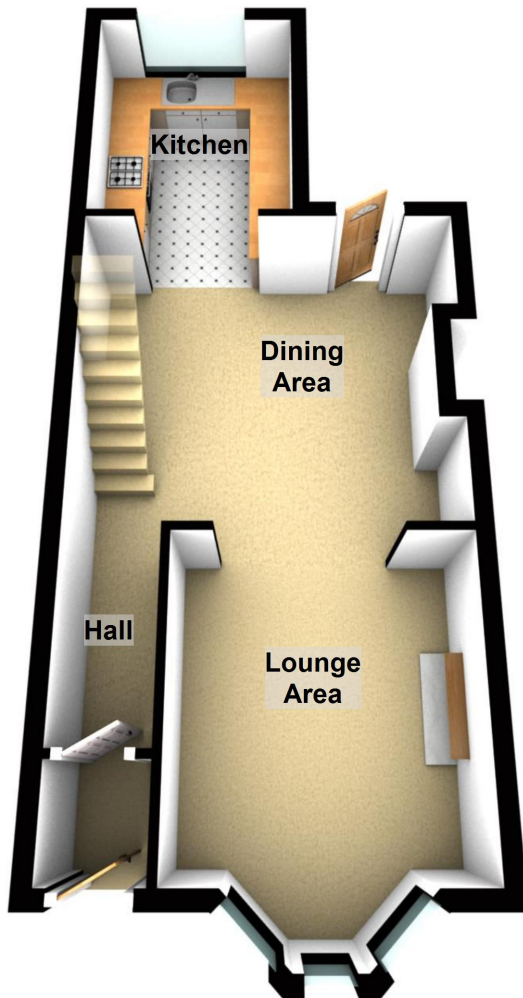
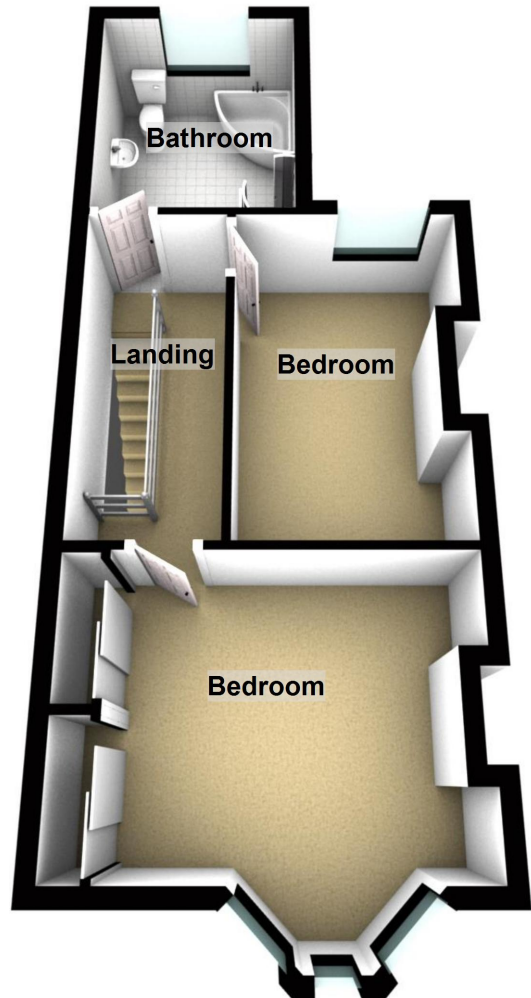


- \* Two Bedroom Mid Terrace House
- \* Fitted Kitchen
- \* Centrally Heated
- \* Double Glazed
- \* Yard

\* For Your Ease, Why Not Book and Confirm Your Viewing Online Via [www.logicstates.co.uk](http://www.logicstates.co.uk)





**Ground Floor****First Floor**

**Beatrice Street, Liverpool**

These particulars do not form part of any offer or contract and must not be relied upon as statements or representations of fact. Any areas, measurements or distances are approximate. The text, photographs and plans are for guidance only and are not necessarily comprehensive. It should not be assumed that the property has all the necessary planning, building regulation or other consents and we have not tested services, equipment or facilities. Purchasers must satisfy themselves by inspection or otherwise.



Energy Efficiency Rating		
	Current	Potential
Very energy efficient - lower running costs		
(92-100) <b>A</b>		
(81-91) <b>B</b>		
(69-80) <b>C</b>		
(55-68) <b>D</b>		
(39-54) <b>E</b>	56	59
(21-38) <b>F</b>		
(1-20) <b>G</b>		
Not energy efficient - higher running costs		
England, Scotland & Wales EU Directive 2002/91/EC		

Environmental Impact (CO <sub>2</sub> ) Rating		
	Current	Potential
Very environmentally friendly - lower CO <sub>2</sub> emissions		
(92-100) <b>A</b>		
(81-91) <b>B</b>		
(69-80) <b>C</b>		
(55-68) <b>D</b>		
(39-54) <b>E</b>	50	51
(21-38) <b>F</b>		
(1-20) <b>G</b>		
Not environmentally friendly - higher CO <sub>2</sub> emissions		
England, Scotland & Wales EU Directive 2002/91/EC		

Logic Are Offering For Sale This Two Bedroom Mid Terrace House

To Comprise

Ground Floor:

Vestibule

Entrance Hallway With Stairs Leading To The First Floor

Lounge (Open To Second Reception Room) - 12'9" x 10'6"

Second Reception Room - 11'7" x 13'6"

Fitted Kitchen - 7'5" x 9'1"

First Floor:

Bedroom One - 10'2" x 11'8"

Bedroom Two - 12'6" x 8'3"

Fitted Bathroom - 7'5" x 8'9"

Exterior:

Front And Rear Yard

For Your Ease, Why Not Book and Confirm Your Viewing Online Via [www.logicstates.co.uk](http://www.logicstates.co.uk) Anytime Night or Day!

These particulars do not form part of any offer or contract and must not be relied upon as statements or representations of fact. Any areas, measurements or distances are approximate. The text, photographs and plans are for guidance only and are not necessarily comprehensive. It should not be assumed that the property has all the necessary planning, building regulation or other consents and we have not tested services, equipment or facilities. Purchasers must satisfy themselves by inspection or otherwise.