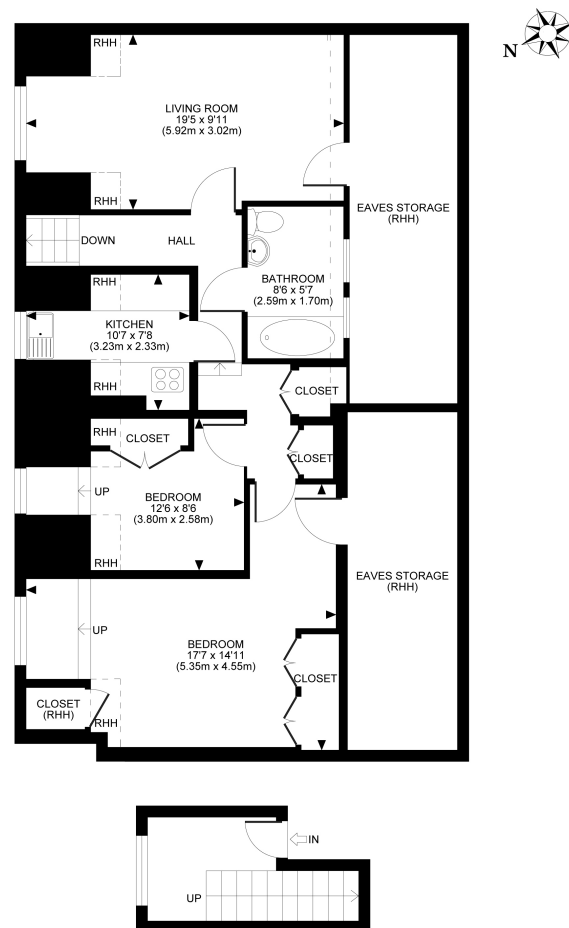


To find out more please call us on **020 8549 3366**

KINGSTON HILL, KINGSTON UPON THAMES, KT2
TOTAL APPROX. FLOOR PLAN AREA 664 SQ.FT (62 SQ.M.) (EXCLUDING RESTRICTED HEIGHT AREA)



All measurements walls, doors, windows, fittings and their appliances, their size and locations are shown conventionally and are approximate only and cannot be regarded as being a representation either by the seller or his agent nor zentuvo
www.zentuvo.co.uk

KINGSTON HILL



Guide Price of £325,000, Leasehold

STATEMENT OF INTENT

- We are independent property marketing experts dedicated to finding you a new home.
- We are agile & responsive to your search requirements. We listen and won't waste time recommending properties outside your search criteria. If we don't have your perfect property we'll market and advertise on your behalf.
- We provide a dedicated point-of-contact who'll listen to what's important in your property search from viewing through to exchange and final completion.



Kingston Hill
020 8549 3366

mail@carringtonsproperty.com

www.carringtonsproperty.co.uk

North Kingston
020 8549 7788



www.carringtonsproperty.co.uk

KINGSTON HILL



Charming 2-bedroom Victorian conversion on Kingston Hill, a short distance from Kingston Town Centre and the River Thames. At the top of the adjacent Queens Road is access to the beautiful Richmond Park and just down Wolverton Avenue, opposite the property, is Norbiton Station for trains to London Waterloo. There are a variety of local shops, restaurants and pubs nearby, and there are bus routes, going towards Wimbledon, Richmond and Surbiton.

This quirky home contains a spacious reception room, compact galley kitchen, bathroom brightened by Velux windows, and the bedrooms, a single and a double offering inbuilt storage each. This third-floor flat, with a second-floor entrance, benefits from plenty of storage space throughout the property and one allocated parking space. Its position on the top floor enables this flat to offer great views over Kingston and South West London.

