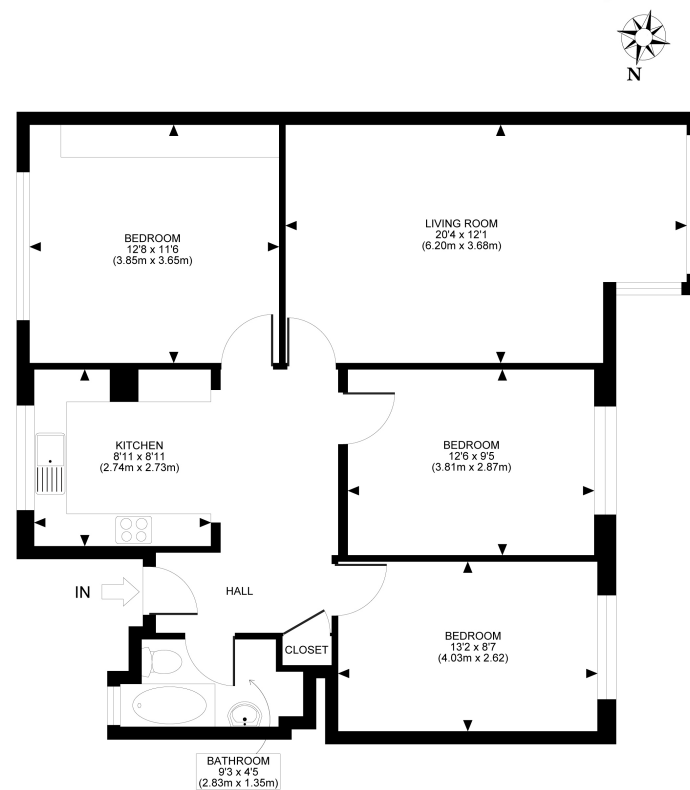


To find out more please call us on **020 8549 3366**

BRAE COURT, KINGSTON HILL, KT2
TOTAL APPROX. FLOOR PLAN AREA 860 SQ.FT (80 SQ.M.)



All measurements walls, doors, windows, fittings and their appliances, their size and locations are shown conventionally and are approximate only and cannot be regarded as being a representation either by the seller or his agent nor zentuvo
www.zentuvo.co.uk

KINGSTON HILL



Guide Price of £425,000, Share of Freehold

STATEMENT OF INTENT

- We are independent property marketing experts dedicated to finding you a new home.
- We are agile & responsive to your search requirements. We listen and won't waste time recommending properties outside your search criteria. If we don't have your perfect property we'll market and advertise on your behalf.
- We provide a dedicated point-of-contact who'll listen to what's important in your property search from viewing through to exchange and final completion.



Kingston Hill | North Kingston
020 8549 3366 | **020 8549 7788**
mail@carringtonsproperty.com
www.carringtonsproperty.co.uk



www.carringtonsproperty.co.uk

KINGSTON HILL



3-double bedroom apartment in the popular development of Brae Court. On Kingston Hill, this property is located perfectly for walks to Richmond Park, Kingston Town Centre, a number of bus routes towards Richmond and Wimbledon and Norbiton Station, for frequent trains direct to London Waterloo.

This home comprises a spacious lounge with room for dining, a stunning kitchen with breakfast bar offering a pleasantly open feel, an attractive bathroom and well-proportioned bedrooms. There are garages in the development, unallocated, that are available to rent. Property is share of freehold with a long lease.

