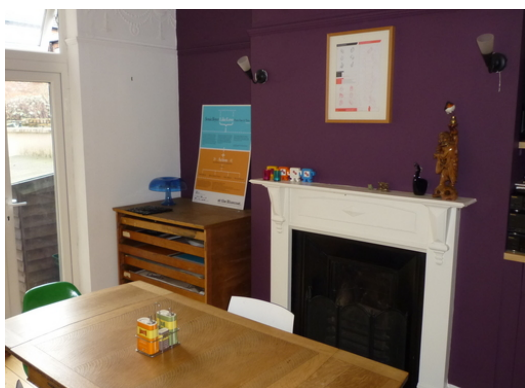
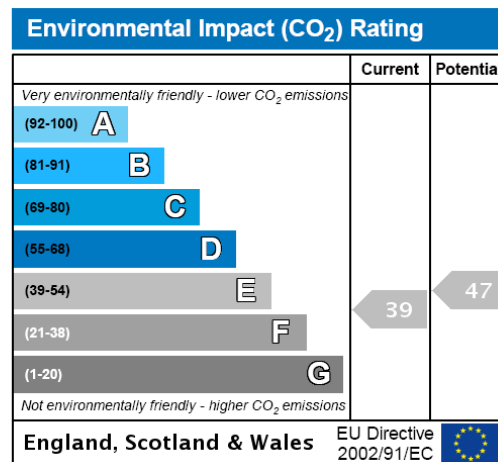
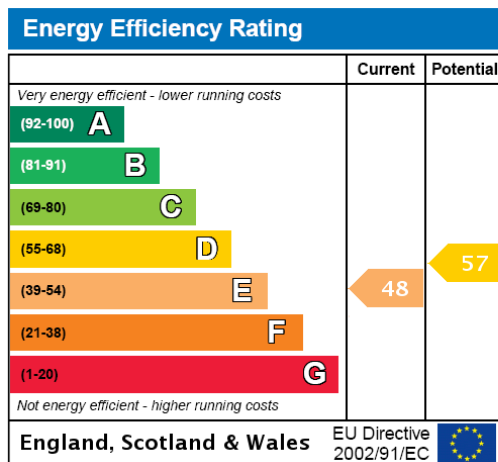




- Four Bedroom Victorian Terrace House
- Fitted Kitchen
- Two Reception Rooms
- Rear Yard With Patio Area
- Centrally Heated
- Double Glazed





Logic Are Offering For Sale This Four Bedroom Victorian Terrace House

To Comprise;

Ground Floor:

Entrance Hall

Lounge With Bay Window

Dining Room

Fitted Kitchen

First Floor:

Bedroom One

Bedroom Two

Bedroom Three

Bedroom Four / Study

Bathroom

Exterior:

Rear Yard

To View Call Logic.

These particulars do not form part of any offer or contract and must not be relied upon as statements or representations of fact. Any areas, measurements or distances are approximate. The text, photographs and plans are for guidance only and are not necessarily comprehensive. It should not be assumed that the property has all the necessary planning, building regulation or other consents and we have not tested services, equipment or facilities. Purchasers must satisfy themselves by inspection or otherwise.