



# HAY HILL MAYFAIR



£495 PER WEEK  
FURNISHED

**WETHERELL**  
MAYFAIR'S FINEST PROPERTIES

102 Mount Street · London · W1K 2TH  
T: 020 7529 5588 E: [rentals@wetherell.co.uk](mailto:rentals@wetherell.co.uk)  
[wetherell.co.uk](http://wetherell.co.uk)

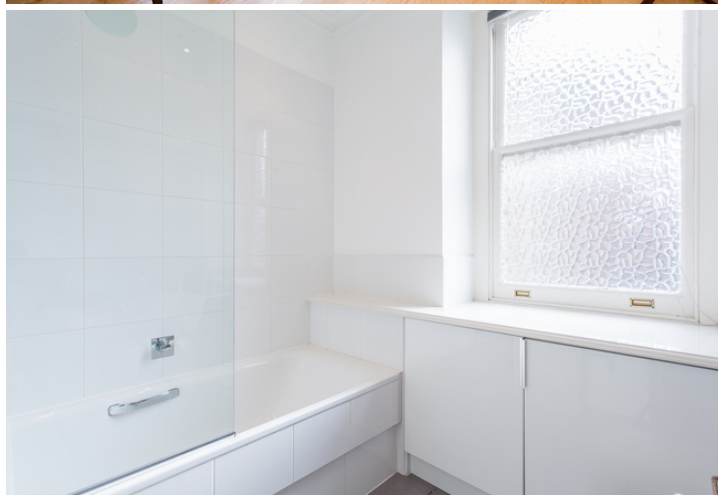
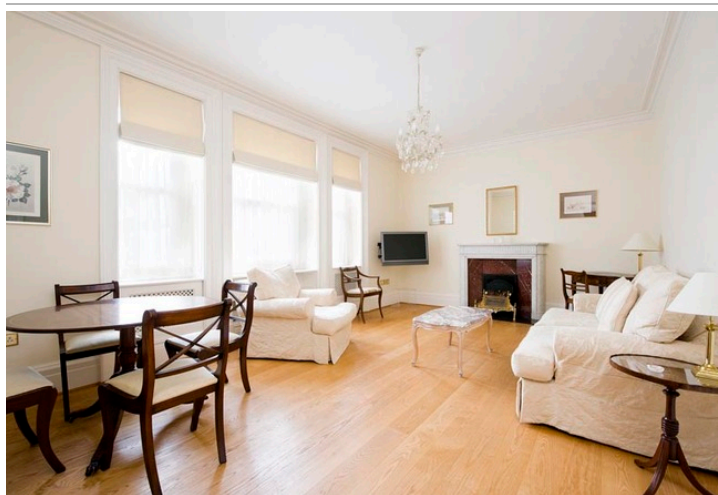
NO-ONE KNOWS MAYFAIR BETTER THAN WETHERELL







## HAY HILL MAYFAIR



An ideal one bedroom pied-a-terre, located on the fifth floor, and just steps away from Berkeley Square.

HIGH CEILINGS • LIFT ACCESS • PORTER • SPACIOUS DOUBLE BEDROOM •  
SEPARATE KITCHEN • SOUTH FACING RECEPTION ROOM

NO-ONE KNOWS MAYFAIR BETTER THAN WETHERELL





## HAY HILL MAYFAIR

An ideal one bedroom pied-a-terre, located on the fifth floor, and just steps away from Berkeley Square.

This spacious and bright property has the added benefit of lift access and portorage. Located near the amenities of Piccadilly, it is also within easy reach of Mayfair's world renowned shops and restaurants.

- \* South-Facing Reception Room
- \* Large Double Bedroom
- \* Separate Kitchen
- \* Lift Access
- \* Porter
- \* 613 sq.ft

\*Wetherell & Co. (Mayfair) Ltd. is a member of the RICS Client money protection Scheme, and also a member of the NAEA, ARLA Propertymark and the property Ombudsman which are Redress schemes.

You can find out more details on the Wetherell website or by contacting us directly.

£495 PER WEEK  
FURNISHED

Wetherell have no authority to make or give any representations or warranties in relation to the property. These particulars do not form part of any offer or contract and must not be relied upon as statements or representations of fact. Any areas, measurements or distances are approximate. The text, photographs and plans are for guidance only and are not necessarily comprehensive. It should not be assumed that the property has all the necessary planning, building regulation or other consents and Wetherell have not tested any services, equipment or facilities. Purchasers must satisfy themselves by inspection or otherwise. 2021

**WETHERELL**  
MAYFAIR'S FINEST PROPERTIES

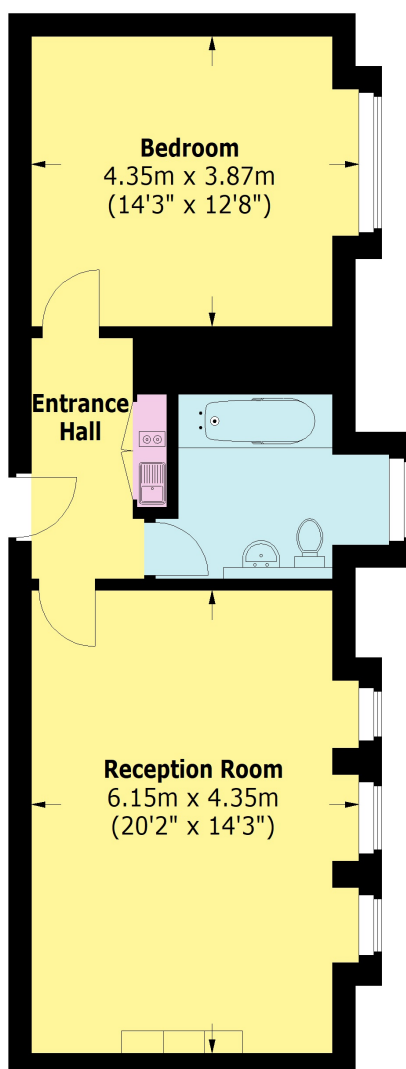
102 Mount Street · London · W1K 2TH  
T: 020 7529 5588 E: [rentals@wetherell.co.uk](mailto:rentals@wetherell.co.uk)  
[wetherell.co.uk](http://wetherell.co.uk)

NO-ONE KNOWS MAYFAIR BETTER THAN WETHERELL





## HAY HILL MAYFAIR



**Fifth Floor**

Wetherell have no authority to make or give any representations or warranties in relation to the property. These particulars do not form part of any offer or contract and must not be relied upon as statements or representations of fact. Any areas, measurements or distances are approximate. The text, photographs and plans are for guidance only and are not necessarily comprehensive. It should not be assumed that the property has all the necessary planning, building regulation or other consents and Wetherell have not tested any services, equipment or facilities. Purchasers must satisfy themselves by inspection or otherwise. 2021

## WETHERELL

MAYFAIR'S FINEST PROPERTIES

102 Mount Street · London · W1K 2TH  
T: 020 7529 5588 E: [rentals@wetherell.co.uk](mailto:rentals@wetherell.co.uk)  
[wetherell.co.uk](http://wetherell.co.uk)

NO-ONE KNOWS MAYFAIR BETTER THAN WETHERELL

