



SOUTH AUDLEY STREET



£3,750 PER WEEK
FURNISHED

WETHERELL
MAYFAIR'S FINEST PROPERTIES

102 Mount Street · London · W1K 2TH
T: 020 7529 5588 E: rentals@wetherell.co.uk
wetherell.co.uk

NO-ONE KNOWS MAYFAIR BETTER THAN WETHERELL





SOUTH AUDLEY STREET



A fully refurbished five bedroom, four bathroom apartment split over the top two floors of a purpose built block with a wrap around balcony.

FIVE DOUBLE BEDROOMS • FIVE BATHROOMS • PRIVATE ROOF TERRACE •
WOODEN FLOORS • LIFT • GUEST CLOAK ROOM

NO-ONE KNOWS MAYFAIR BETTER THAN WETHERELL





SOUTH AUDLEY STREET

A fully refurbished five bedroom, four bathroom apartment split over the top two floors of a purpose built block with a wrap around balcony.

The property is ideal for entertaining with three reception rooms, modern kitchen and large windows which fill the apartment with natural light. Further benefits include wooden flooring and a utility room.

The main bedroom suite is on the top floor and has a walk through dressing room with views towards Grosvenor Square and leads to an en suite bathroom.

This modern apartment building has a caretaker, a passenger lift and is opposite the popular Richoux restaurant and close to Grosvenor House Hotel.

The apartment is located in the heart of Mayfair Village close to the dining and shopping facilities of Mount Street and the open spaces of Hyde Park.

Accommodation:

- * Five Double Bedrooms
- * Five Bathrooms
- * Private Roof Terrace
- * Wooden Floors
- * Lift
- * Guest Cloak Room

*Wetherell & Co. (Mayfair) Ltd. is a member of the RICS Client money protection Scheme, and also a member of the NAEA, ARLA Propertymark and the property Ombudsman which are Redress schemes.

Any Tenancy that falls outside of the housing act will be subject to Tenant fees. You can find out more details on the Wetherell website or by contacting us directly.

£3,750 PER WEEK
FURNISHED

Wetherell have no authority to make or give any representations or warranties in relation to the property. These particulars do not form part of any offer or contract and must not be relied upon as statements or representations of fact. Any areas, measurements or distances are approximate. The text, photographs and plans are for guidance only and are not necessarily comprehensive. It should not be assumed that the property has all the necessary planning, building regulation or other consents and Wetherell have not tested any services, equipment or facilities. Purchasers must satisfy themselves by inspection or otherwise. 2020

WETHERELL
MAYFAIR'S FINEST PROPERTIES

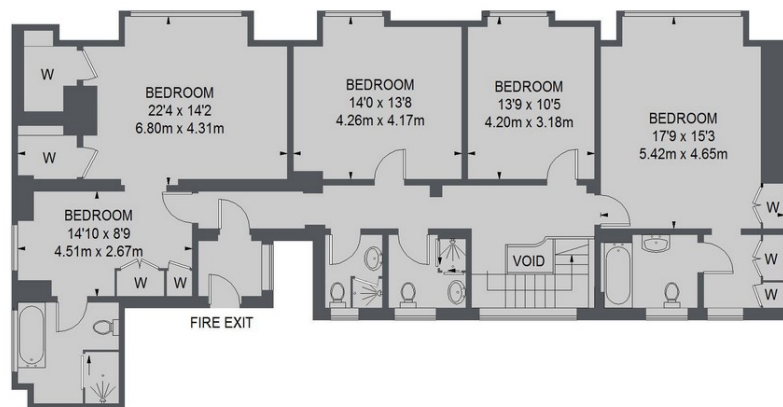
102 Mount Street · London · W1K 2TH
T: 020 7529 5588 E: rentals@wetherell.co.uk
wetherell.co.uk

NO-ONE KNOWS MAYFAIR BETTER THAN WETHERELL

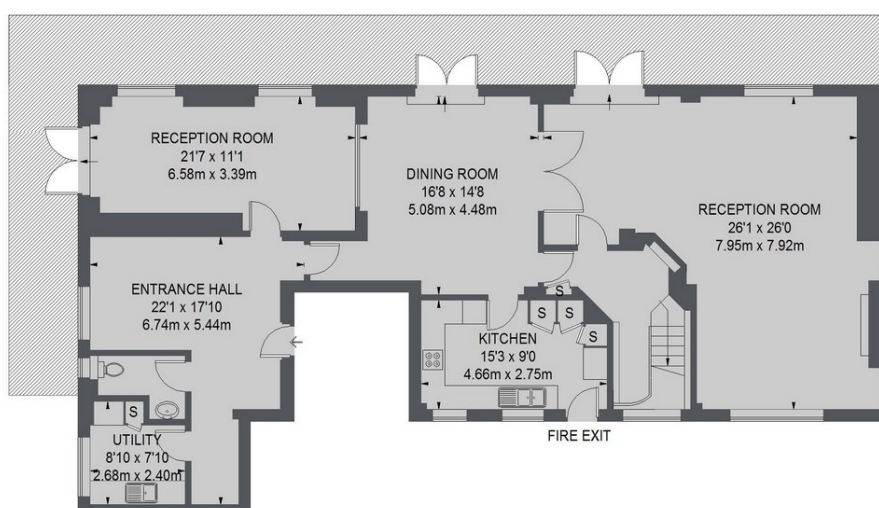




SOUTH AUDLEY STREET



SIXTH FLOOR



FIFTH FLOOR

TOTAL APPROX. FLOOR AREA
(EXCLUDING VOID)
3120 SQ. FT. (289.87 SQ. M.)

Wetherell have no authority to make or give any representations or warranties in relation to the property. These particulars do not form part of any offer or contract and must not be relied upon as statements or representations of fact. Any areas, measurements or distances are approximate. The text, photographs and plans are for guidance only and are not necessarily comprehensive. It should not be assumed that the property has all the necessary planning, building regulation or other consents and Wetherell have not tested any services, equipment or facilities. Purchasers must satisfy themselves by inspection or otherwise. 2020

WETHERELL

MAYFAIR'S FINEST PROPERTIES

102 Mount Street · London · W1K 2TH
T: 020 7529 5588 E: rentals@wetherell.co.uk
wetherell.co.uk



NO-ONE KNOWS MAYFAIR BETTER THAN WETHERELL