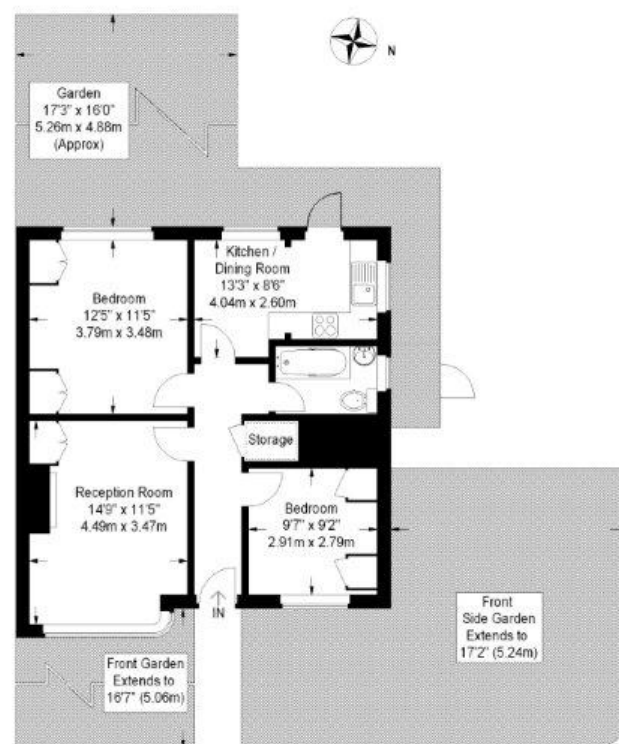


To find out more please call us on **020 8549 3366**

Queens Court, Queens Road KT2 7SP

Approximate Gross Internal Area = 60 sq m / 646 sq ft



Measured in accordance with RICS guidelines. To be used for identification and guidance purposes only. Not to scale.
© Photos Plans and EPCs | Tel: 07774 688 771 | info@photosplansandepcs.com | www.photosplansandepcs.com (ID 85656)

QUEENS ROAD



Guide Price of £475,000, Leasehold

STATEMENT OF INTENT

- We are independent property marketing experts dedicated to finding you a new home.
- We are agile & responsive to your search requirements. We listen and won't waste time recommending properties outside your search criteria. If we don't have your perfect property we'll market and advertise on your behalf.
- We provide a dedicated point-of-contact who'll listen to what's important in your property search from viewing through to exchange and final completion.



Kingston Hill | North Kingston

020 8549 3366

020 8549 7788

mail@carringtonsproperty.com

www.carringtonsproperty.co.uk



www.carringtonsproperty.co.uk

QUEENS ROAD



Fantastic two bedroom ground floor maisonette nestled in a wonderful location adjacent to Richmond Park. This flat boasts excellent living accommodation with a private entrance and hallway leading to a generous reception room with a large bay window and feature fireplace. There is a modern, fully fitted kitchen with dual aspect windows and a separate dining area. The back garden faces a westerly aspect with ample space for entertaining/bbq and there is a large garden at the front of the property. Please call to arrange a viewing or request a video tour.

