



NORTH AUDLEY STREET MAYFAIR



£3,500 PER WEEK
FURNISHED

WETHERELL
MAYFAIR'S FINEST PROPERTIES

102 Mount Street · London · W1K 2TH
T: 020 7529 5588 E: rentals@wetherell.co.uk
wetherell.co.uk

NO-ONE KNOWS MAYFAIR BETTER THAN WETHERELL





NORTH AUDLEY STREET MAYFAIR



A newly renovated four bedroom apartment with air conditioning and porter, close to Grosvenor Square and Hyde Park.

FOUR DOUBLE BEDROOMS • THREE BATHROOMS • SECOND FLOOR (LIFT ACCESS)
• PORTER • AIR CONDITIONING • WOODEN FLOORING

NO-ONE KNOWS MAYFAIR BETTER THAN WETHERELL





NORTH AUDLEY STREET MAYFAIR

A newly renovated four bedroom apartment with air conditioning and porter, close to Grosvenor Square and Hyde Park.

Finished to the highest standard the property has an entrance hall, large double reception room with dining area, separate kitchen, four double bedrooms and three bathrooms.

Further benefits include high ceilings, wood floors, lighting system and secondary glazing.

North Audley Street is conveniently located close to Selfridges and all the amenities and travel links of Bond Street and Marble Arch underground stations.

Accommodation:

- * Four Double Bedrooms
- * Three Bathrooms
- * Second Floor (Lift Access)
- * Porter
- * Air Conditioning
- * Wooden Flooring

*Wetherell & Co. (Mayfair) Ltd. is a member of the RICS Client money protection Scheme, and also a member of the NAEA, ARLA Propertymark and the property Ombudsman which are Redress schemes.

Any Tenancy that falls outside of the housing act will be subject to Tenant fees. You can find out more details on the Wetherell website or by contacting us directly.

£3,500 PER WEEK
FURNISHED

Wetherell have no authority to make or give any representations or warranties in relation to the property. These particulars do not form part of any offer or contract and must not be relied upon as statements or representations of fact. Any areas, measurements or distances are approximate. The text, photographs and plans are for guidance only and are not necessarily comprehensive. It should not be assumed that the property has all the necessary planning, building regulation or other consents and Wetherell have not tested any services, equipment or facilities. Purchasers must satisfy themselves by inspection or otherwise. 2020

WETHERELL
MAYFAIR'S FINEST PROPERTIES

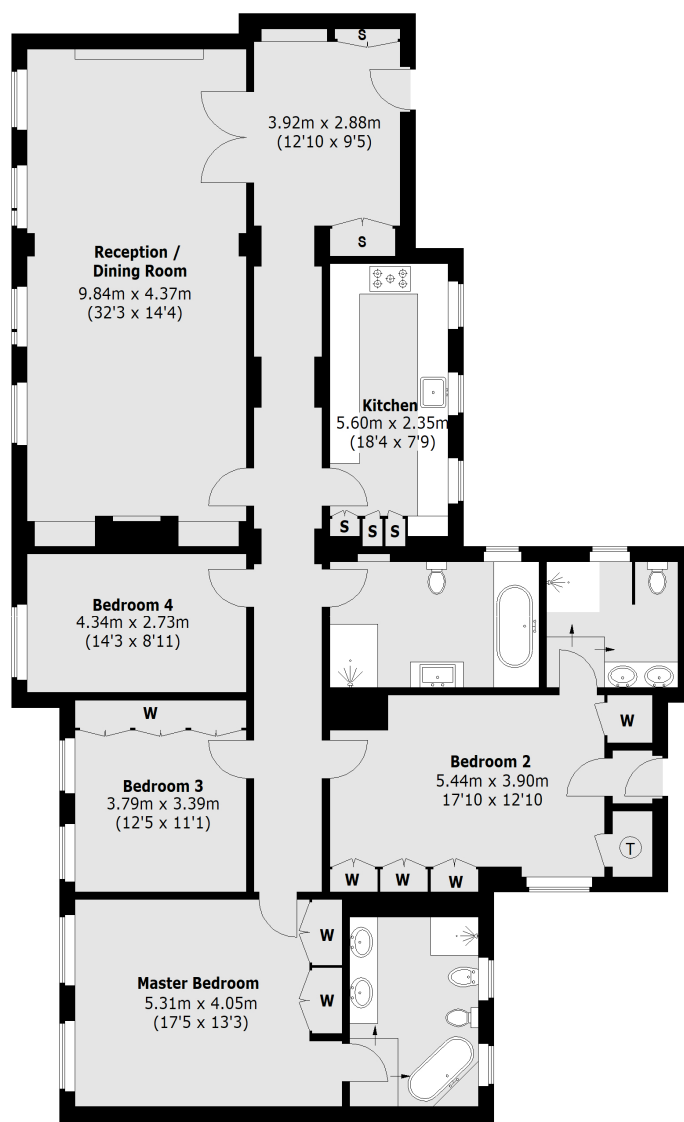
102 Mount Street · London · W1K 2TH
T: 020 7529 5588 E: rentals@wetherell.co.uk
wetherell.co.uk

NO-ONE KNOWS MAYFAIR BETTER THAN WETHERELL





NORTH AUDLEY STREET MAYFAIR



Second Floor

Total area (approx.): 193.9 sq. m (2087 sq. ft)

Wetherell have no authority to make or give any representations or warranties in relation to the property. These particulars do not form part of any offer or contract and must not be relied upon as statements or representations of fact. Any areas, measurements or distances are approximate. The text, photographs and plans are for guidance only and are not necessarily comprehensive. It should not be assumed that the property has all the necessary planning, building regulation or other consents and Wetherell have not tested any services, equipment or facilities. Purchasers must satisfy themselves by inspection or otherwise. 2020

WETHERELL

MAYFAIR'S FINEST PROPERTIES

102 Mount Street · London · W1K 2TH
T: 020 7529 5588 E: rentals@wetherell.co.uk
wetherell.co.uk

NO-ONE KNOWS MAYFAIR BETTER THAN WETHERELL

