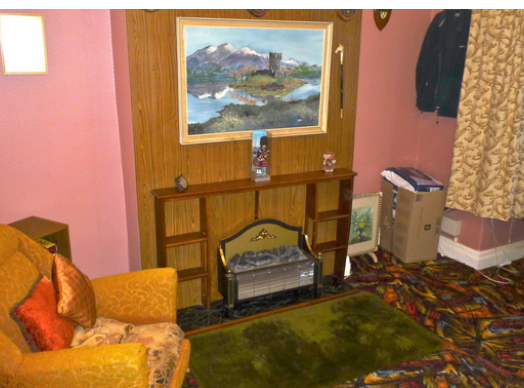
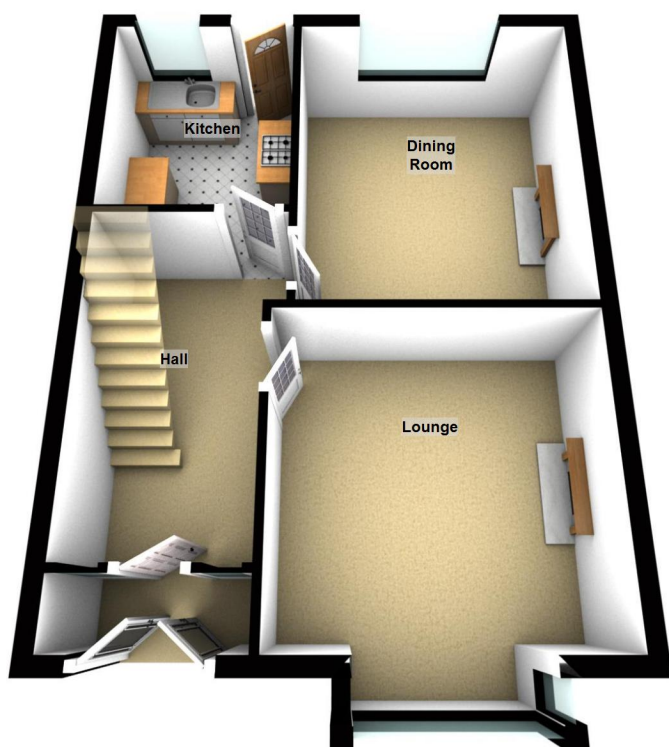




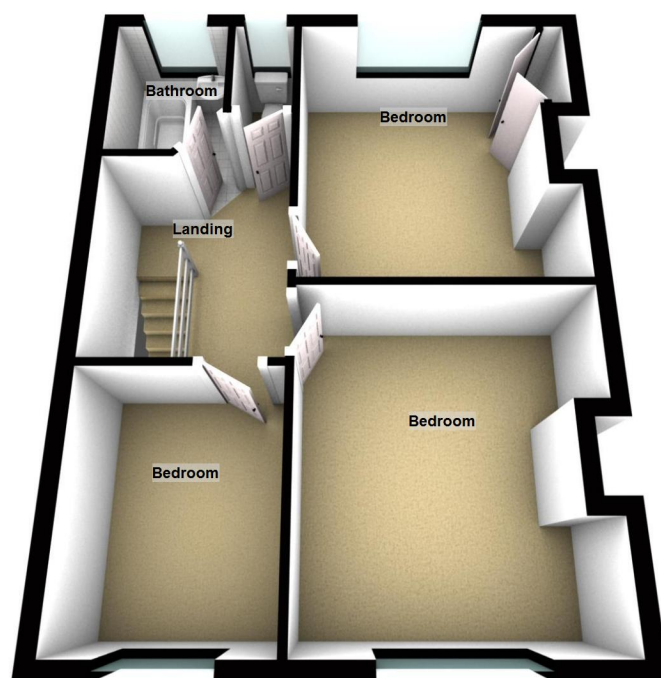
- Three Bedroom Semi Detached
- Two Reception Rooms
- Garden



Ground Floor



First Floor



30 Burdett Road, Liverpool

These particulars do not form part of any offer or contract and must not be relied upon as statements or representations of fact. Any areas, measurements or distances are approximate. The text, photographs and plans are for guidance only and are not necessarily comprehensive. It should not be assumed that the property has all the necessary planning, building regulation or other consents and we have not tested services, equipment or facilities. Purchasers must satisfy themselves by inspection or otherwise.



Logic are offering this three Bedroom semi detached family home for sale, situated in this popular road in Brighton - Le - Sands. This property is in need of modernisation to comprise; Hall, Lounge, second Reception room and Kitchen. To the first floor, there are three Bedrooms and a family Bathroom with separate W/C. The property has a Garden to rear. Early viewing is advised.

To view call Logic 0151 920 2404.

Measurements available upon request.

These particulars do not form part of any offer or contract and must not be relied upon as statements or representations of fact. Any areas, measurements or distances are approximate. The text, photographs and plans are for guidance only and are not necessarily comprehensive. It should not be assumed that the property has all the necessary planning, building regulation or other consents and we have not tested services, equipment or facilities. Purchasers must satisfy themselves by inspection or otherwise.