

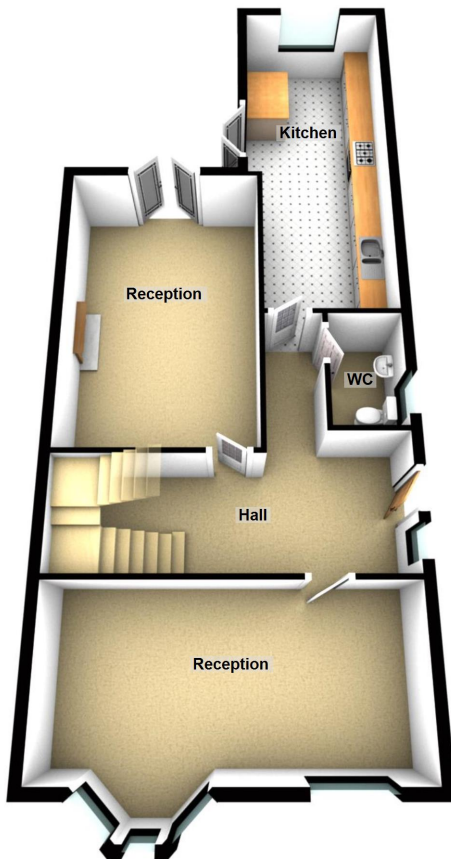


- Four Bedroom Semi Detached House
- Two Reception Rooms
- Front Yard
- Rear Garden
- Summer House In Garden With Electricity
- Centrally Heated

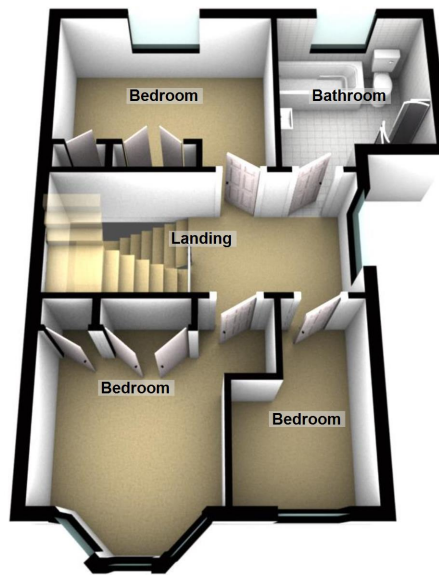




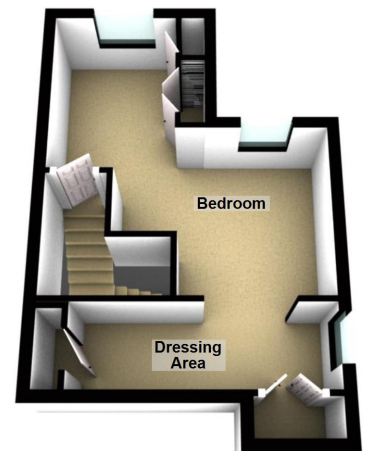
Ground Floor



First Floor

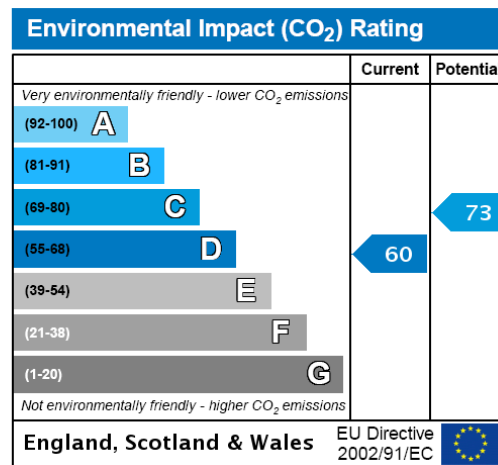
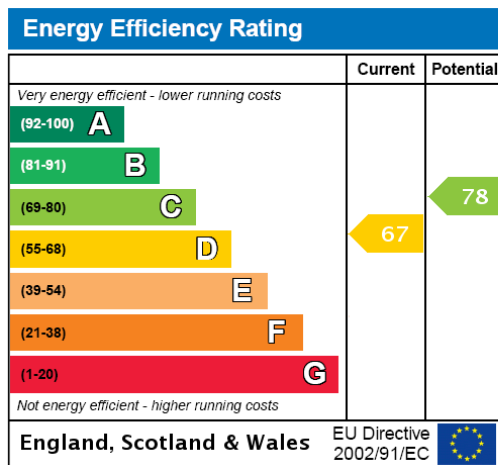


Second Floor



Stanley Park, Liverpool

These particulars do not form part of any offer or contract and must not be relied upon as statements or representations of fact. Any areas, measurements or distances are approximate. The text, photographs and plans are for guidance only and are not necessarily comprehensive. It should not be assumed that the property has all the necessary planning, building regulation or other consents and we have not tested services, equipment or facilities. Purchasers must satisfy themselves by inspection or otherwise.



Logic Are Offering For Sale This Four Bedroom Semi Detached House

To Comprise;

Ground Floor:

Entrance Hall - 12'7" x 6'6"

Lounge - 14'9" x 9'7"

Second Reception Room / Dining Room - 11'6" x 18'8"

Kitchen - 9'0" x 22'9"

W/C - 6'3" x 4'3"

First Floor:

Bedroom One - 8'1" x 10'0"

Bedroom Two - 9'2" x 10'7"

Bedroom Three (Used As An Office) - 6'2" x 9'7"

Bathroom - 8'0" x 6'8"

Second Floor:

Bedroom Four - 12'6" x 14'8"

Walk In Wardrobe And Dressing Area - 8'5" x 9'3"

Exterior:

Front Yard

Rear Garden

Summer House With Electricity

Driveway

To View Call Logic.

These particulars do not form part of any offer or contract and must not be relied upon as statements or representations of fact. Any areas, measurements or distances are approximate. The text, photographs and plans are for guidance only and are not necessarily comprehensive. It should not be assumed that the property has all the necessary planning, building regulation or other consents and we have not tested services, equipment or facilities. Purchasers must satisfy themselves by inspection or otherwise.