

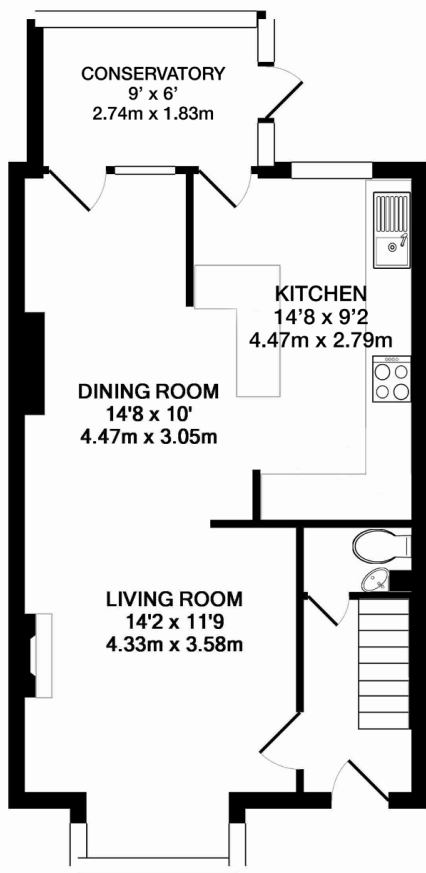
3 BEDROOM HOUSE
WESTON PARK CLOSE, THAMES DITTON

£699,950

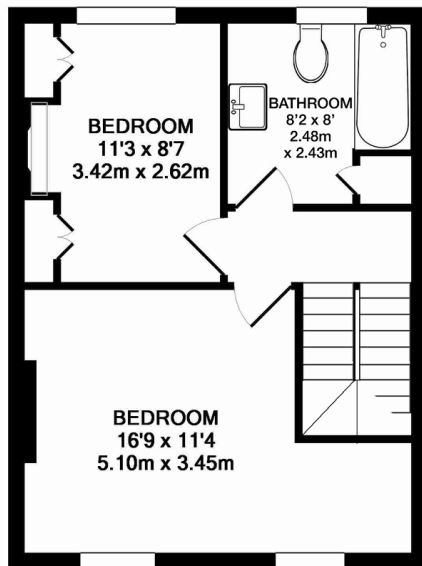


Beautifully presented period family home, set over three floors, with views over Weston Green. Thames Ditton & Esher stations are both within easy reach. Also within catchment for excellent local schools. NO CHAIN

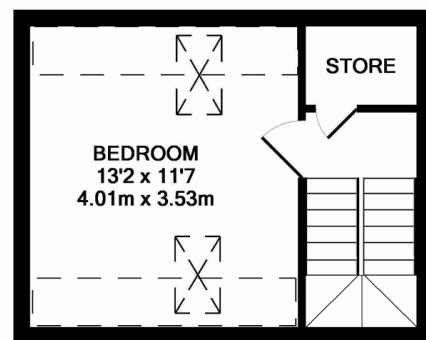




GROUND FLOOR



FIRST FLOOR



SECOND FLOOR

Whilst every attempt has been made to ensure the accuracy of this floor plan, measurement of doors, windows, rooms and any other items are approximate and no responsibility is taken for any error, omission or mis-statement.
Made with Metropix © 2014.

INTERNAL FLOOR AREA (APPROX.) 1115 sq ft/ 103.59 sq m

The Rear Garden extends to 55' (16.76m) approximately

We have prepared these sales particulars as a general guide after a brief inspection of the property and with information supplied by the Vendors. No detailed survey was carried out nor were the services and appliances tested. Photographs are not comprehensive and no assumption should be made that the property remains as displayed. The floor plans are for representation purposes only as defined by the RICS Code of Measuring Practice. Measurements, room shapes and sizes are approximate and must not be relied on. No responsibility is taken for errors or omissions. All fixtures and fittings, carpets, curtains/blinds, lighting and kitchen equipment, whether fitted or not, are deemed to be removable by the Vendors unless specifically itemised. No representation is given as to the title of the property.

HJC

HIGHER VALUES

HJC Surbiton 020 8390 0404 | HJC Lettings 020 8390 9290 | HJC Thames Ditton 020 8398 3707
surbiton@hjc.co.uk | lettings@hjc.co.uk | thamesditton@hjc.co.uk

Reg no: 05272208 | VAT no: 720 5720 65