



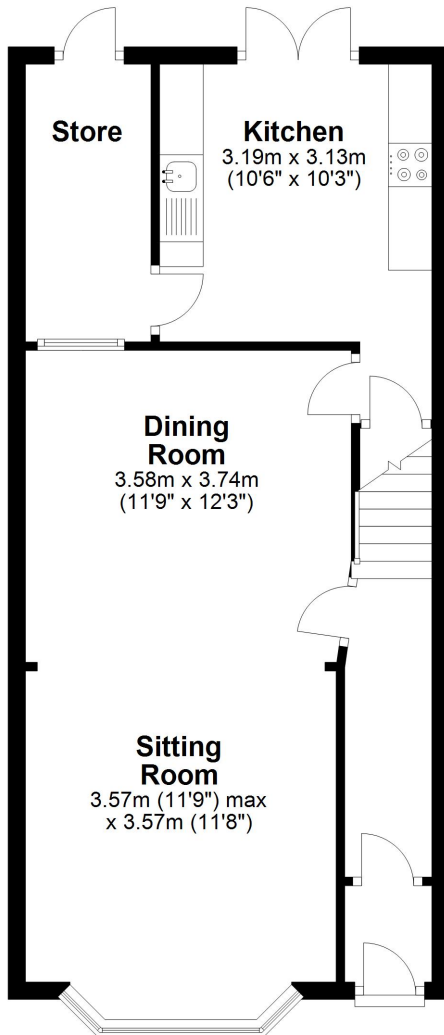
Selling the FACTS not the FLOWERS

- Two Bed End of Terrace
- Two Reception Rooms
- Attic Room
- Gas Central Heating
- Double Glazed Windows

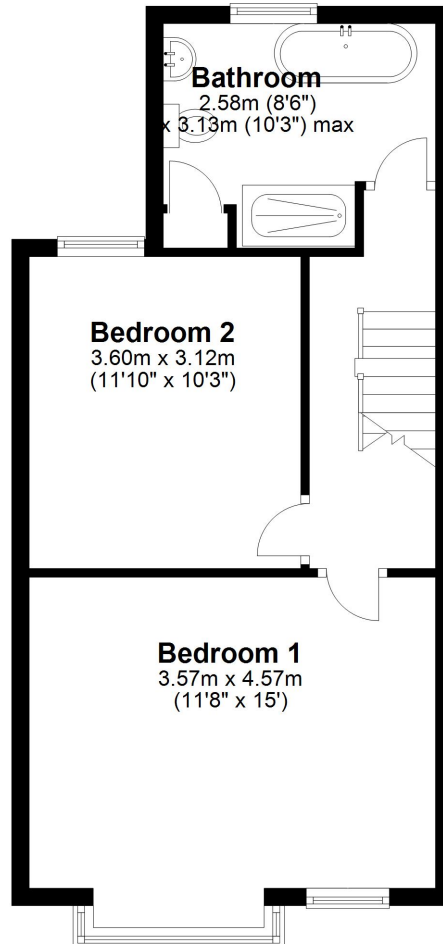




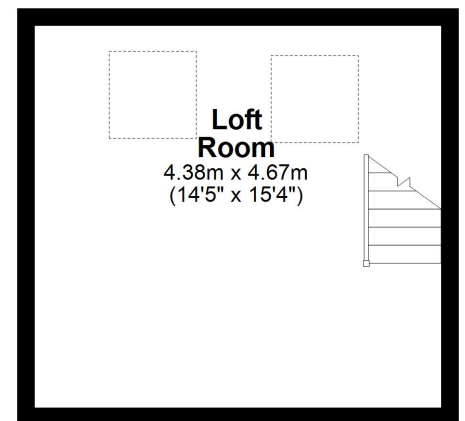
Ground Floor



First Floor



Second Floor



These particulars do not form part of any offer or contract and must not be relied upon as statements or representations of fact. Any areas, measurements or distances are approximate. The text, photographs and plans are for guidance only and are not necessarily comprehensive. It should not be assumed that the property has all the necessary planning, building regulation or other consents and we have not tested services, equipment or facilities. Purchasers must satisfy themselves by inspection or otherwise.



Energy Efficiency Rating		
	Current	Potential
Very energy efficient - lower running costs		
(92-100) A		
(81-91) B		
(69-80) C		78
(55-68) D		
(39-54) E	48	
(21-38) F		
(1-20) G		
Not energy efficient - higher running costs		
England, Scotland & Wales	EU Directive 2002/91/EC	

Selling the FACTS not the FLOWERS

For all room sizes/dimensions please see the floor Plans

Title number- MS241862

Tenure-Freehold

Local Authority- Sefton Council

Council tax- Band B

Annual price-£1,588.60

Conservation Area- No

Flood Risk- Very low

Floor Area-1,044.10 ft 2 / 97 m 2

Plot Size-0.02 Acres

Mobile Coverage

Vodafone-Great

Three-Great

O2-Great

Broadband

Basic-17 Mbps

Superfast-66 Mbps

Ultrafast-1000 Mbps

Satellite / Fibre TV Availability

BT - Excellent

Sky - Excellent

Virgin- Excellent

97 | SOUTH ROAD | WATERLOO | L22 0LR

Tel: 0151 920 2404

E-mail: info@logicstates.co.uk





(Data source from sprift)

'Unusually good at what we do'

Buy, sell ore let with the agent of the decade- Zoopla customer excellence award 2020

These particulars do not form part of any offer or contract and must not be relied upon as statements or representations of fact. Any areas, measurements or distances are approximate. The text, photographs and plans are for guidance only and are not necessarily comprehensive. It should not be assumed that the property has all the necessary planning, building regulation or other consents and we have not tested services, equipment or facilities. Purchasers must satisfy themselves by inspection or otherwise.