



CHESTERFIELD GARDENS



£475 PER WEEK PLUS FEES
FURNISHED

WETHERELL
MAYFAIR'S FINEST PROPERTIES

102 Mount Street · London · W1K 2TH
T: 020 7529 5588 E: rentals@wetherell.co.uk
wetherell.co.uk

NO-ONE KNOWS MAYFAIR BETTER THAN WETHERELL





CHESTERFIELD GARDENS



A conveniently located one bedroom apartment within a portered block with a lift, 24-hour security, off-street parking and heating/hot water included in the rent.

DOUBLE ASPECT RECEPTION • 24HR PORTER • EXCELLENT LOCATION • SPACIOUS
DOUBLE BEDROOM • BUILT IN STORAGE • WOODEN FLOORING

NO-ONE KNOWS MAYFAIR BETTER THAN WETHERELL





CHESTERFIELD GARDENS

A conveniently located one bedroom apartment within a portered block with a lift, 24-hour security, off-street parking and heating/hot water included in the rent.

Located off Curzon Street, this property is situated close to the green spaces of Hyde Park, Green Park and the eating and shopping facilities of Mayfair.

Accommodation:

- * Spacious Double Bedroom
- * 24-Hour Security
- * Off-Street Car Parking
- * Wooden Flooring
- * Separate Kitchen

*Wetherell & Co. (Mayfair) Ltd. is a member of the RICS Client money protection Scheme, and also a member of the NAEA, ARLA Propertymark and the property Ombudsman which are Redress schemes.

Any Tenancy that falls outside of the housing act will be subject to Tenant fees. You can find out more details on the Wetherell website or by contacting us directly.

£475 PER WEEK PLUS FEES
FURNISHED

Wetherell have no authority to make or give any representations or warranties in relation to the property. These particulars do not form part of any offer or contract and must not be relied upon as statements or representations of fact. Any areas, measurements or distances are approximate. The text, photographs and plans are for guidance only and are not necessarily comprehensive. It should not be assumed that the property has all the necessary planning, building regulation or other consents and Wetherell have not tested any services, equipment or facilities. Purchasers must satisfy themselves by inspection or otherwise. 2020

WETHERELL
MAYFAIR'S FINEST PROPERTIES

102 Mount Street · London · W1K 2TH
T: 020 7529 5588 E: rentals@wetherell.co.uk
wetherell.co.uk

NO-ONE KNOWS MAYFAIR BETTER THAN WETHERELL

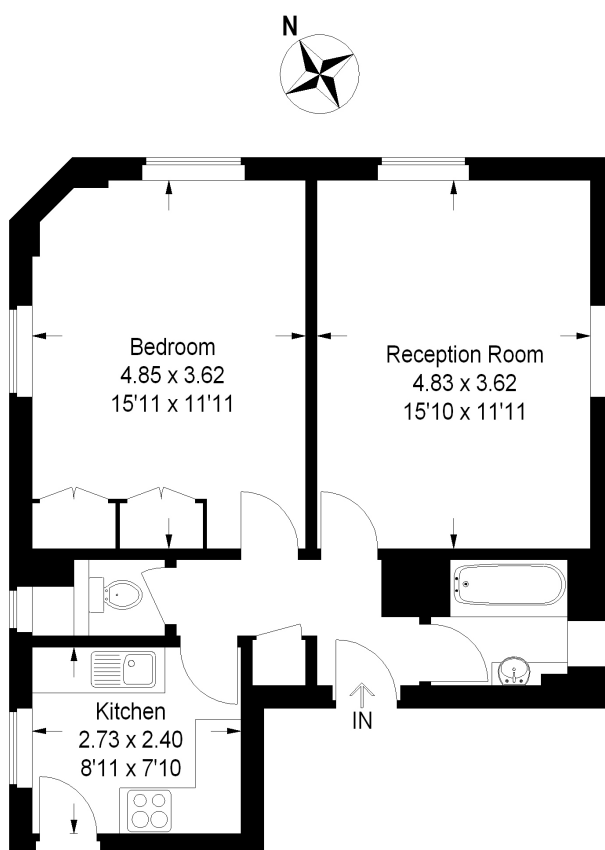




CHESTERFIELD GARDENS

Chesterfield Gardens, W1J

Approximate Gross Internal Area
53.7 sq m / 578 sq ft



Ground Floor

Illustration for identification purposes only, measurements are approximate, not to scale.
FloorplansUsketch.com © 2015 (ID 188202)

Wetherell have no authority to make or give any representations or warranties in relation to the property. These particulars do not form part of any offer or contract and must not be relied upon as statements or representations of fact. Any areas, measurements or distances are approximate. The text, photographs and plans are for guidance only and are not necessarily comprehensive. It should not be assumed that the property has all the necessary planning, building regulation or other consents and Wetherell have not tested any services, equipment or facilities. Purchasers must satisfy themselves by inspection or otherwise. 2020

WETHERELL

MAYFAIR'S FINEST PROPERTIES

102 Mount Street · London · W1K 2TH
T: 020 7529 5588 E: rentals@wetherell.co.uk
wetherell.co.uk

NO-ONE KNOWS MAYFAIR BETTER THAN WETHERELL

