

4 BEDROOM HOUSE
LIVESEY CLOSE, KINGSTON UPON THAMES

£2,100 PCM



Families or professional couples only. No sharers or students. Enjoying a convenient location on a private development and between Kingston and Surbiton town centres a well presented, bright and spacious townhouse. The accommodation includes a well appointed kitchen/breakfast room, two cloakrooms, one/two good size receptions, master bedroom with ensuite shower room, three/four further bedrooms and a family bathroom. The property also benefits from a pretty south facing garden, garage and off street parking. Available unfurnished. Available end of Aug.



Livesey Close

Approximate Gross Internal Area
 Ground Floor :- 52 sq m / 560 sq ft
 First Floor :- 49 sq m / 527 sq ft
 Second Floor :- 49 sq m / 527 sq ft
 Third Floor :- 22 sq m / 233 sq ft
 Total :- 172 sq m / 1846 sq ft



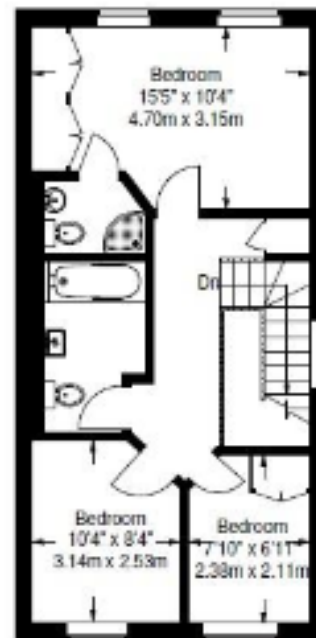
Third Floor



Ground Floor



First Floor



Second Floor

Illustration for identification purposes only, measurements are approximate, not to scale.

We have prepared these sales particulars as a general guide after a brief inspection of the property and with information supplied by the Vendors. No detailed survey was carried out nor were the services and appliances tested. Photographs are not comprehensive and no assumption should be made that the property remains as displayed.

The floor plans are for representation purposes only as defined by the RICS Code of Measuring Practice. Measurements, room shapes and sizes are approximate and must not be relied on. No responsibility is taken for errors or omissions. All fixtures and fittings, carpets, curtains/blinds, lighting and kitchen equipment, whether fitted or not, are deemed to be removable by the Vendors unless specifically itemised. No representation is given as to the title of the property.

HJC

HIGHER VALUES

HJC Surbiton 020 8390 0404 | HJC Lettings 020 8390 9290 | HJC Thames Ditton 020 8398 3707
 surbiton@hjc.co.uk | lettings@hjc.co.uk | thamesditton@hjc.co.uk

Reg no: 05272208 | VAT no: 720 5720 65