



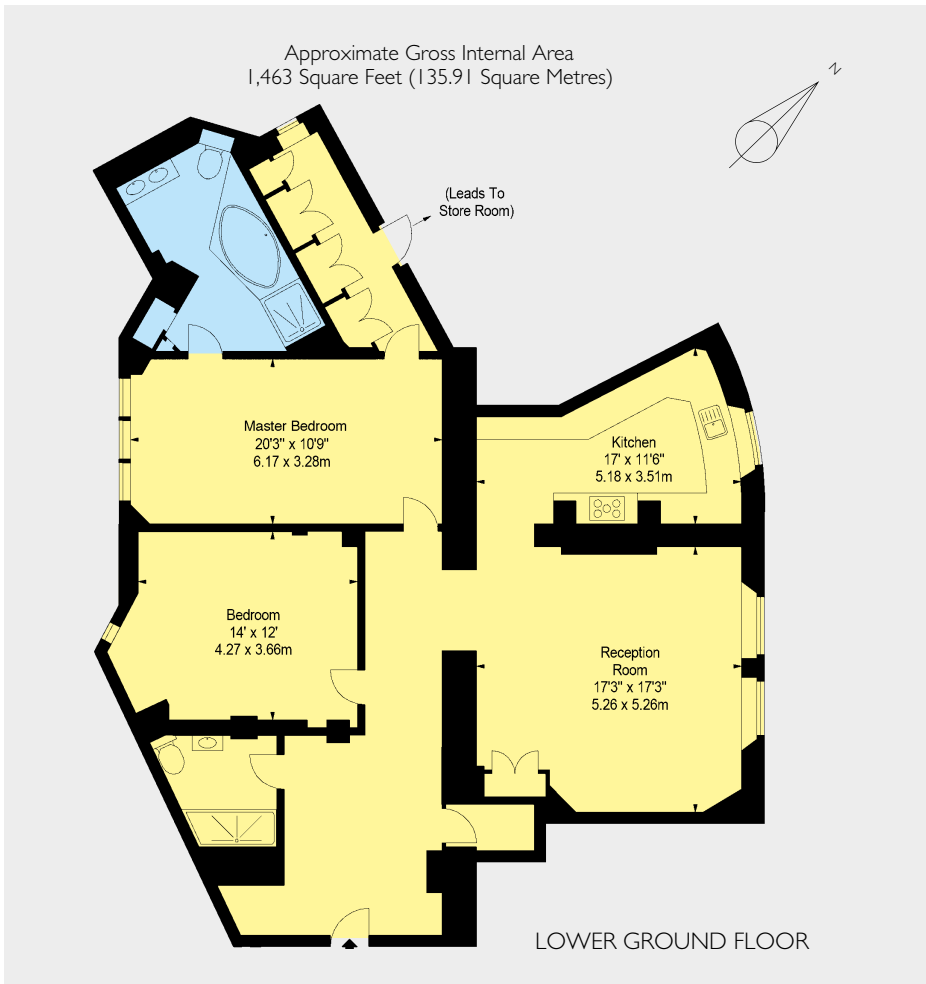
# SOUTH STREET

MAYFAIR W1



A RECENTLY REFURBISHED TWO BEDROOM FLAT COVERING 1,463 SQUARE FEET WITH VIEWS OF THE MOUNT STREET GARDENS, BENEFITING FROM A SHARE OF THE FREEHOLD AND A 24 HOUR PORTER.





A recently refurbished two Bedroom flat with views of the Mount Street Gardens, benefiting from a Share of the Freehold and a 24 hour porter.

Situated in a popular Mayfair residential building, this well proportioned flat consists of a Reception Room looking onto the Mount Street Gardens, a Master Bedroom Suite with Dressing Room and a further Bedroom with separate Shower Room.

#### ACCOMMODATION

- Reception Room
- Kitchen
- Master Bedroom Suite with Dressing Room
- Second Bedroom
- Shower Room
- 1,463 Sq Ft
- EPC Band: C

#### TERMS

Leasehold: Share of Freehold  
Service Charge: Approximately £5,200 per annum  
Asking Price: £2,500,000



102 Mount Street · London · W1K 2TH  
T: 020 7529 5566 E: sales@wetherell.co.uk  
wetherell.co.uk



Wetherell have no authority to make or give any representations or warranties in relation to the property. These particulars do not form part of any offer or contract and must not be relied upon as statements or representations of fact. Any areas, measurements or distances are approximate. The text, photographs and plans are for guidance only and are not necessarily comprehensive. It should not be assumed that the property has all the necessary planning, building regulation or other consents and Wetherell have not tested any services, equipment or facilities. Purchasers must satisfy themselves by inspection or otherwise. Energy Efficiency Rating: Band C. May 2017

NO-ONE KNOWS MAYFAIR BETTER THAN WETHERELL