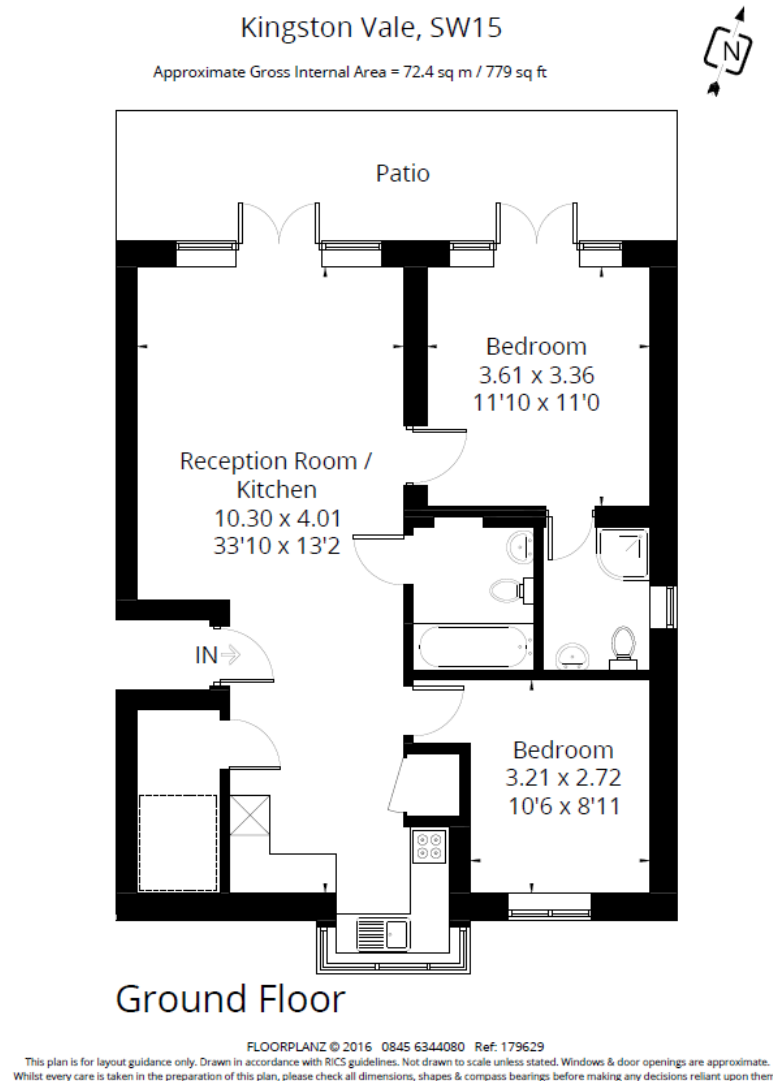


To find out more please call us on **020 8549 3366**



KINGSTON VALE



Offers in excess of £400,000, Leasehold

STATEMENT OF INTENT

- We are independent property marketing experts dedicated to finding you a new home.
- We are agile & responsive to your search requirements. We listen and won't waste time recommending properties outside your search criteria. If we don't have your perfect property we'll market and advertise on your behalf.
- We provide a dedicated point-of-contact who'll listen to what's important in your property search from viewing through to exchange and final completion.



Kingston Hill | North Kingston
020 8549 3366 | **020 8549 7788**
mail@carringtonsproperty.com
www.carringtonsproperty.co.uk



www.carringtonsproperty.co.uk

KINGSTON VALE



Spacious 2 double bedroom, ground-floor flat in a Kingston Vale modern gated development that backs onto the stunning and peaceful Richmond Park.

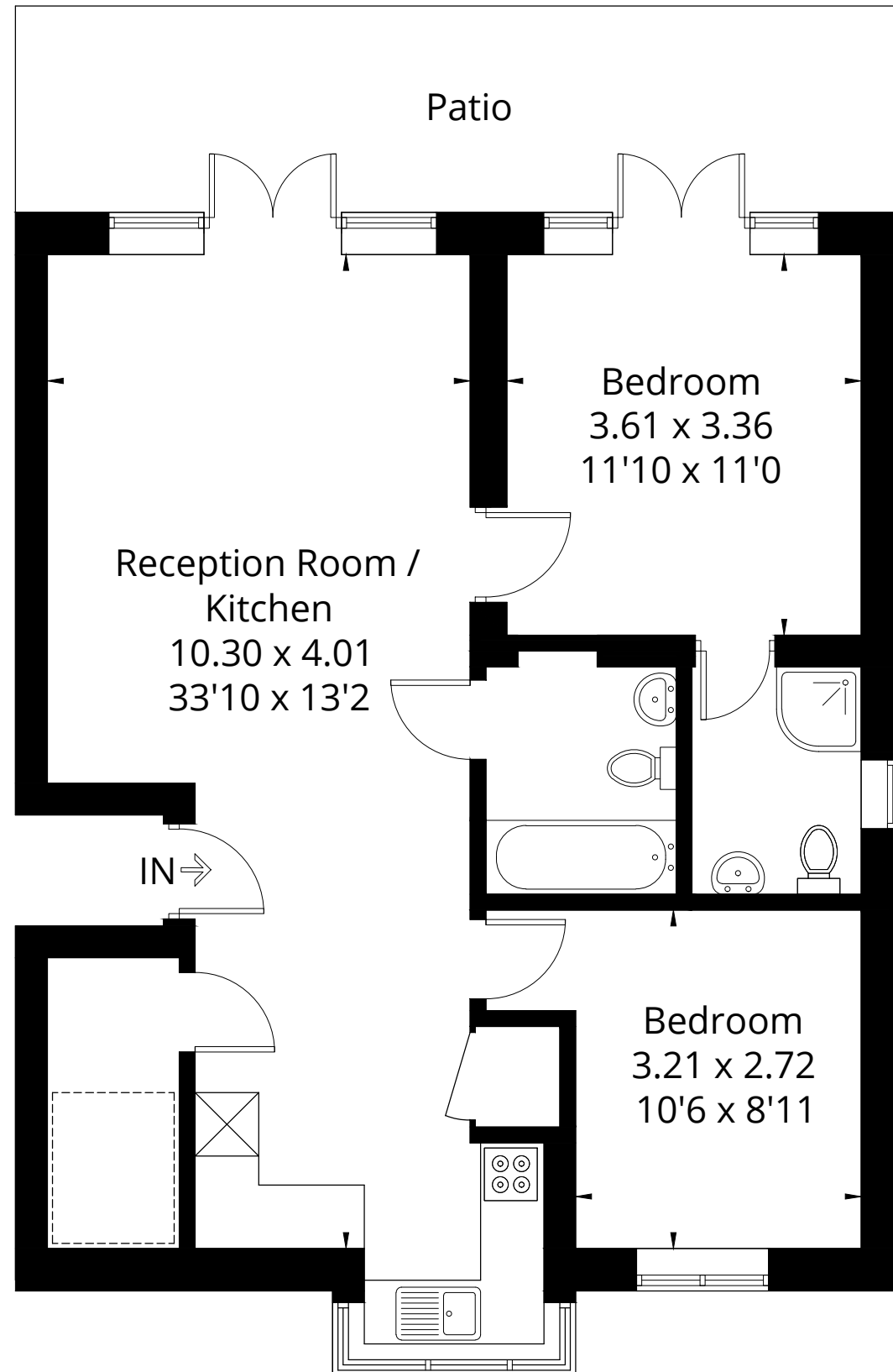
Kingston Vale is nestled between the beautiful and extensive Richmond Park and Wimbledon Common and is within easy reach of the A3 and local bus routes into London, as well as local shops and amenities.

This fantastic flat has 2 good sized double bedrooms, 2 contemporary bathrooms, a modern fitted kitchen and open plan lounge with large french doors, which open out onto the private patio. The master bedroom with en-suite bathroom also benefits from access to the private patio which overlooks the mature landscaped communal gardens. Spacious throughout and with great storage options and attractive wooden flooring, the well-presented flat also has an allocated parking space. There is also bike storage available. Property available from 17th July 2021 and offered unfurnished.



Kingston Vale, SW15

Approximate Gross Internal Area = 72.4 sq m / 779 sq ft



Ground Floor

FLOORPLANZ © 2016 0845 6344080 Ref: 179629

This plan is for layout guidance only. Drawn in accordance with RICS guidelines. Not drawn to scale unless stated. Windows & door openings are approximate. Whilst every care is taken in the preparation of this plan, please check all dimensions, shapes & compass bearings before making any decisions reliant upon them.