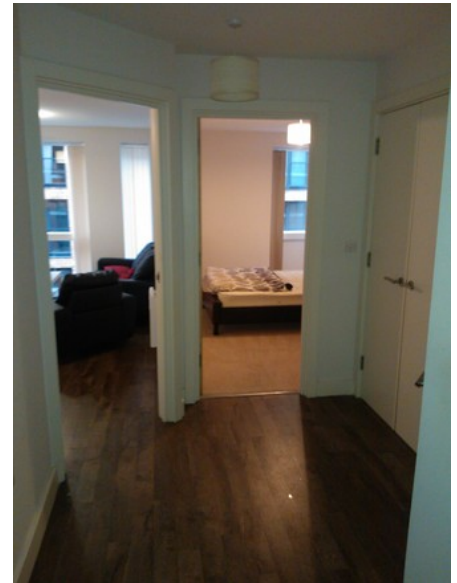


Essex Street, City Centre, B5
£650 per month + fees, For long let



A well presented one bedroom apartment available in the popular I-Land development. Modern interior and spacious.





Greystone Lettings give notice to anyone reading these particulars that: (i) these particulars do not constitute part of an offer or contract; (ii) these particulars and any pictures or plans represent the opinion of the author and are given in good faith for guidance only and must not be construed as statements of fact; (iii) nothing in the particulars shall be deemed a statement that the property is in good condition otherwise; we have not carried out a structural survey of the property and have not tested the services, appliances or specified fittings.

Long Description

i-land is a contemporary property development in Birmingham, made up of 271 one and two bedroom apartments.

Situated around a calming internal water filled courtyard with inter-connecting sky bridges linking each side of the i-land building.

Situated on Essex Street in the heart of Birmingham city centre, and close to The Hippodrome, The Arcadian Centre, The Mailbox and Bullring, i-land is the perfect location to make the most of apartment style city living.

There is a 24 hour concierge on site and secure fob entry.

The apartment is furnished with a spacious open plan lounge with dining area.

Modern fitted kitchen with integrated fridge and freezer, integrated oven and hob.

Spacious bedroom which overlooks Essex street.

Modern bathroom with shower, tiled wall and floor tiles, heated towel rail.

Reception Hallway with intercom

Available Now