



## Accommodation

Three reception rooms

Large entrance hall

Large eat-in kitchen

Five bedrooms

Three en suites

Patio garden

Access Belgrave Square communal gardens

Combined Area 3,865 Sq ft / 359 Sq m

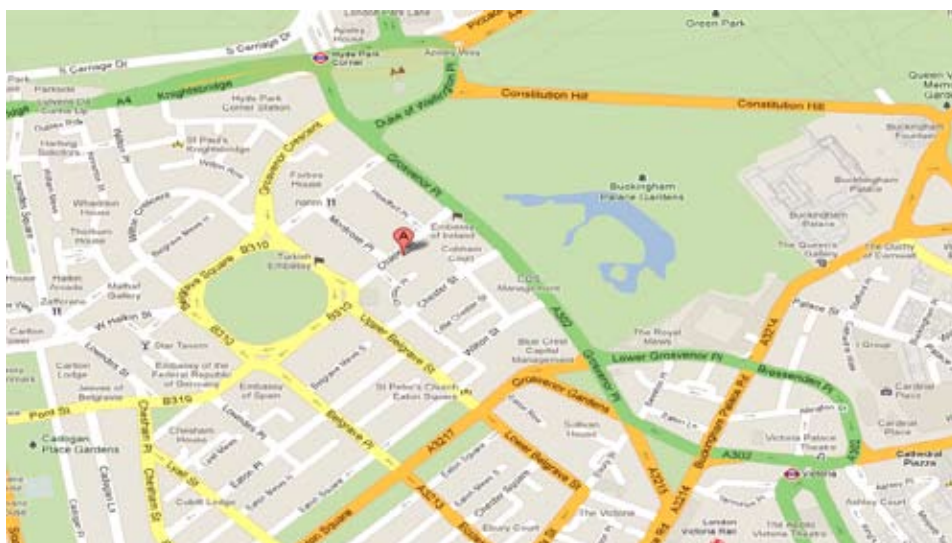
Lettings 020 7235 8861

A spacious five bedroom family house covering 3,865 sq ft available for rent in Belgravia. The property has five bedrooms of which three are en suite, three great sized reception rooms, large eat in kitchen equipped with modern appliances including dumbwaiter, large entrance hall, study, private patio garden and access to Belgrave Square Gardens with tennis court.

Situated within easy reach of the shops, bars and restaurants of Belgravia, Knightsbridge and Sloane Square the property is located close to the greenery of Hyde Park and the nearest underground station is Hyde Park Corner (Piccadilly Line). The property is available immediately, either furnished or unfurnished for a long let.



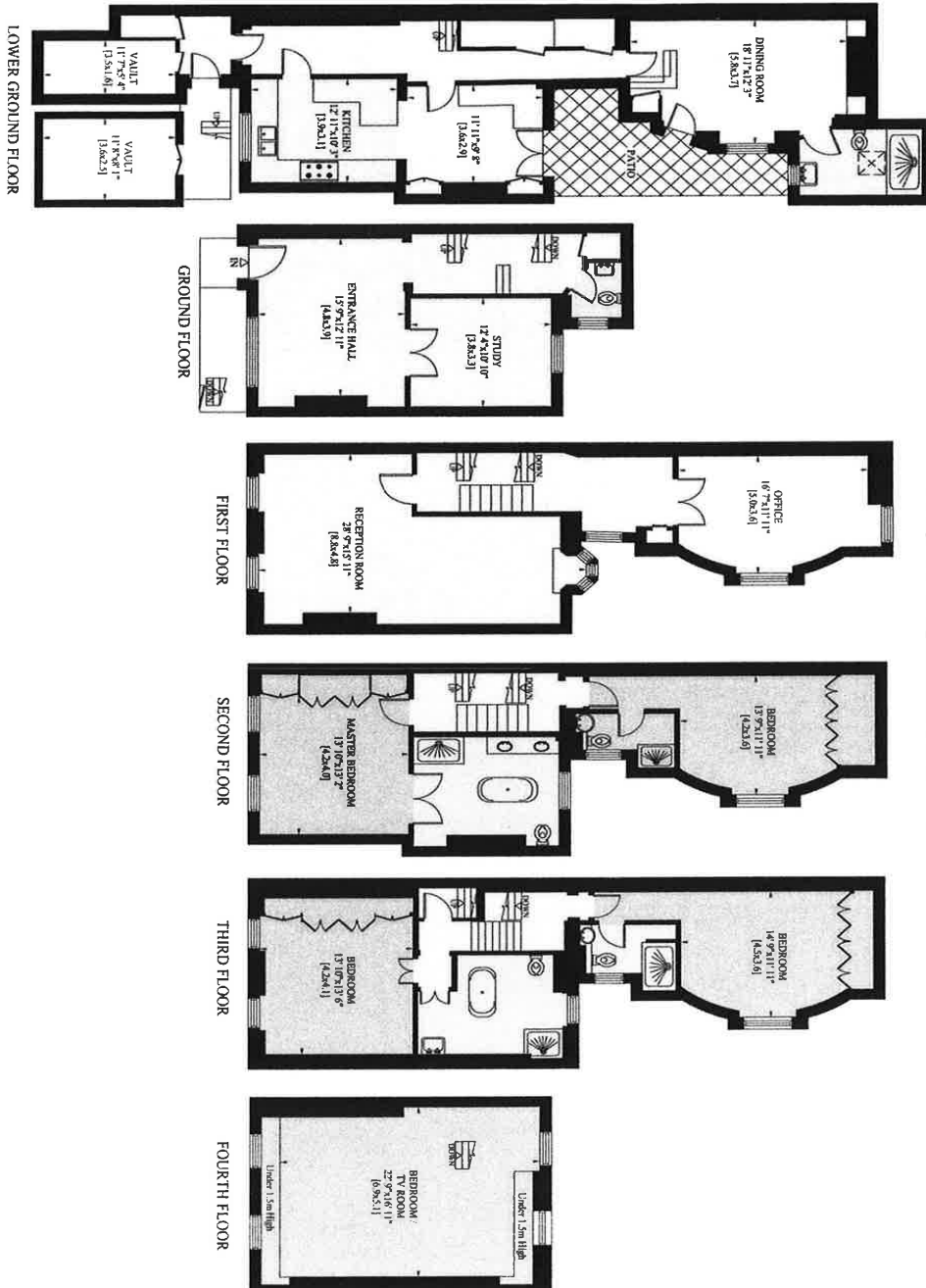
Location



1 Motcomb Street  
London SW1X 8JX

T +44 (0)20 7235 8861  
F +44 (0)20 7235 819

info@henryandjames.co.uk  
www.henryandjames.co.uk



Gross Internal Area:  
Including Under 1.5m High & Vault 373 Sq. metres  
Gross Internal Area: 4007 Sq. feet  
360 Sq. metres  
Excluding Under 1.5m High & Vault 3865 Sq. feet



9 Chapel Street, SW1X



1 Motcomb Street  
London SW1X 8JX

T +44 (0)20 7235 8861  
F +44 (0)20 7235 7819

info@henryandjames.co.uk  
www.henryandjames.co.uk