



CLARGES STREET

MAYFAIR



A large lateral family apartment on the fourth floor of this secure portered block close to Berkeley Square and Green Park.

£2,000 PER WEEK PLUS FEES
FURNISHED

WETHERELL
MAYFAIR'S FINEST PROPERTIES

102 Mount Street · London · W1K 2TH
T: 020 7529 5588 E: rentals@wetherell.co.uk
wetherell.co.uk



NO-ONE KNOWS MAYFAIR BETTER THAN WETHERELL

1982-2012



CLARGES STREET MAYFAIR



A large lateral family apartment on the fourth floor of this secure portered block close to Berkeley Square and Green Park.

LATERAL APARTMENT • FOUR DOUBLE BEDROOMS • 24 HOUR PORTER • PARKING
AVAILABLE BY NEGOTIATION

NO-ONE KNOWS MAYFAIR BETTER THAN WETHERELL



1982-2012



CLARGES STREET MAYFAIR

A large lateral family apartment in this secure portered block close to Berkeley Square and Green Park.

The apartment provides over 2000 sq ft of living space and comprises of a grand entrance hall, large reception room with entertaining space, eat-in kitchen, master bedroom suite, three further double bedrooms and four bathrooms.

The building benefits from a 24 hour porter and passenger lift. Parking is available by separate negotiation.

Clarges Street is close to the open spaces of Green Park and the attractions of Piccadilly. Transport can be accessed via Green Park Station for the Victoria, Jubilee and Piccadilly Lines.

£2,000 PER WEEK PLUS FEES
FURNISHED

Wetherell have no authority to make or give any representations or warranties in relation to the property. These particulars do not form part of any offer or contract and must not be relied upon as statements or representations of fact. Any areas, measurements or distances are approximate. The text, photographs and plans are for guidance only and are not necessarily comprehensive. It should not be assumed that the property has all the necessary planning, building regulation or other consents and Wetherell have not tested any services, equipment or facilities. Purchasers must satisfy themselves by inspection or otherwise. 2014

WETHERELL
MAYFAIR'S FINEST PROPERTIES

102 Mount Street · London · W1K 2TH
T: 020 7529 5588 E: rentals@wetherell.co.uk
wetherell.co.uk

NO-ONE KNOWS MAYFAIR BETTER THAN WETHERELL



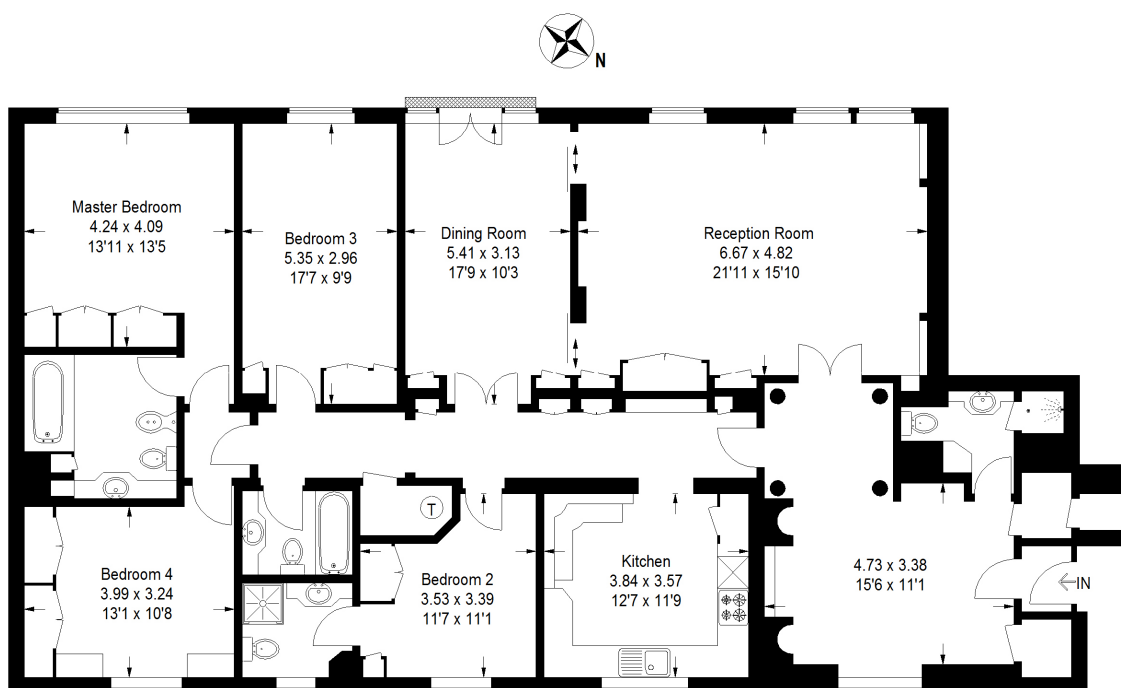
1982-2012



CLARGES STREET MAYFAIR

Clarges Street, W1J

Approximate Gross Internal Area = 196 sq m / 2110 sq ft



Fourth Floor

Illustration for identification purposes only, measurements are approximate, not to scale.
FloorplansUsketch.com © 2014 (ID128170)

Wetherell have no authority to make or give any representations or warranties in relation to the property. These particulars do not form part of any offer or contract and must not be relied upon as statements or representations of fact. Any areas, measurements or distances are approximate. The text, photographs and plans are for guidance only and are not necessarily comprehensive. It should not be assumed that the property has all the necessary planning, building regulation or other consents and Wetherell have not tested any services, equipment or facilities. Purchasers must satisfy themselves by inspection or otherwise. 2014

WETHERELL

MAYFAIR'S FINEST PROPERTIES

102 Mount Street · London · W1K 2TH
T: 020 7529 5588 E: rentals@wetherell.co.uk
wetherell.co.uk



1982-2012

NO-ONE KNOWS MAYFAIR BETTER THAN WETHERELL