

# OLD TOWN HALL BOSHAM WEST SUSSEX

**FINLAY  
BREWER**



# OLD TOWN HALL BOSHAM WEST SUSSEX

**6 DOUBLE BEDROOMS \* DRAWING ROOM \* SITTING ROOM \* SUMMER ROOM \* KITCHEN/BREAKFAST AREA \* 2 BATHROOMS  
SHOWER/UTILITY ROOM \* GUEST CLOAKROOM \* SECOND KITCHEN \* 2 SEPARATE WCS \* STORAGE & LOFT STORAGE  
LARGE WALLED GARDEN WITH GARDEN STORAGE AREA AND SUN TERRACES  
DETACHED DOUBLE GARAGE & OFF STREET PARKING FOR 2/3 CARS \* 1 MOORING \* EPC RATING D 61**

A sensational 6 double bedroom detached family house with wonderful living rooms, a superb walled garden and uninterrupted views down the Bosham Channel. The Old Town Hall has never before been on the market as one property and has been in the current owners family since 1934, having originally been 5 separate cottages. The ground floor is currently arranged with a formal reception, sitting room which has been opened up to the kitchen/breakfast room and a summer room all with fabulous views across the garden and over the water. There is a large hallway, guest cloakroom, shower/utility and bathroom plus storage space to the rear of this floor. The first floor has a spacious master bedroom with direct views over the water and down towards Bosham Channel. There are 2 further double bedrooms, both with views over the water, a family bathroom and a second kitchen. The second floor has 3 further bedrooms. The house has great character, is a wonderful family home and is located in the heart of the Village. The walled garden is mainly laid to lawn with various sun terraces and a covered area to the side for canoes, kayaks, windsurfers etc. There is a detached double garage and off street parking for 2/3 cars within 3 minutes walk, and also a mooring available for rent. Substantial family houses rarely come to the market in Bosham, and particularly in this unique position. This opportunity should not be missed – it's a once in a lifetime!

**PRICE ON APPLICATION**

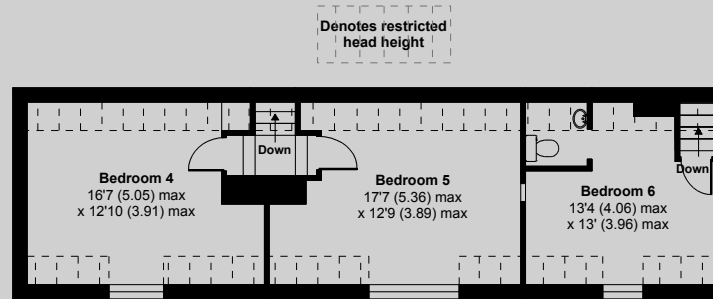
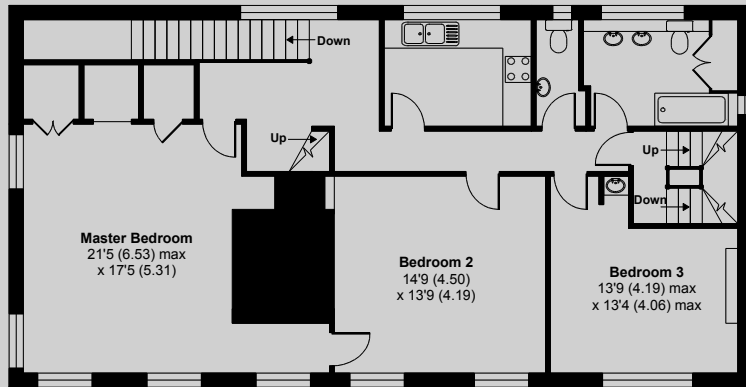
**FREEHOLD**

**SUBJECT TO CONTRACT**

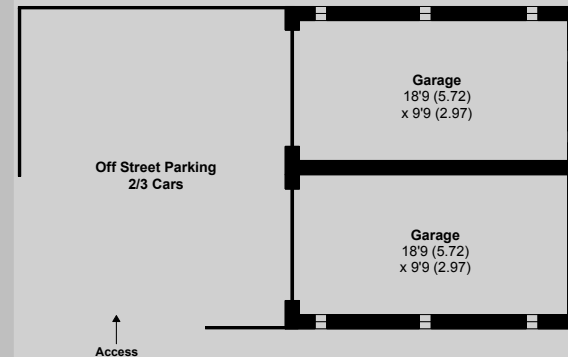
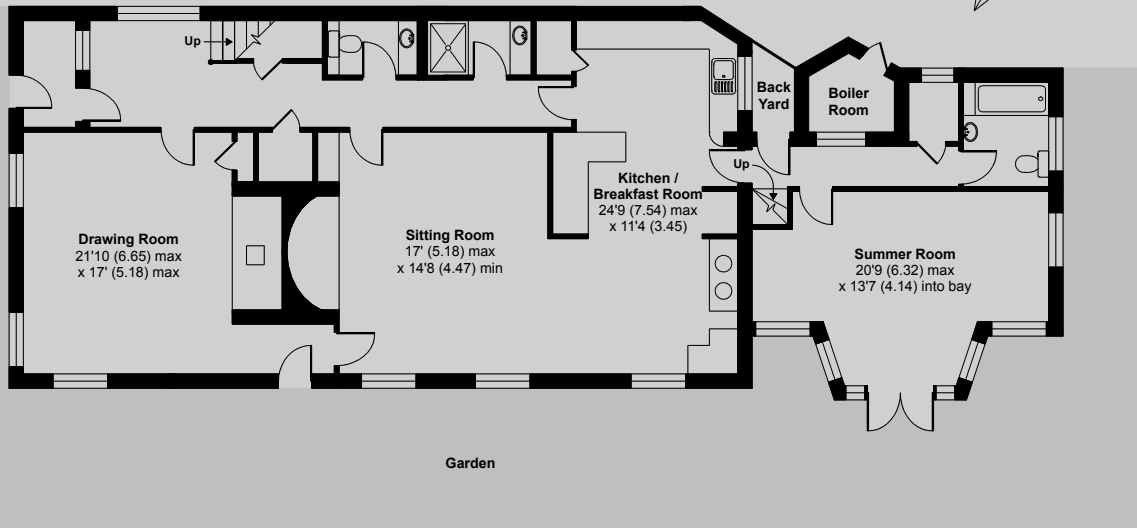




Misrepresentation: We make every effort to ensure that these particulars and other information given are as accurate as possible, but they are neither legal representation or warranties nor do they form an offer or contract of sale



Approximate Gross Internal Area  
3298 Sq Ft/306.3 Sq M  
(Excludes detached garage & restricted head height)



FOR ILLUSTRATIVE PURPOSES ONLY - NOT TO SCALE  
The position & size of doors, windows, appliances and other features are approximate only.

138 Shepherds Bush Road, London W6 7PB  
Tel: 020 7371 4171 Fax: 020 7371 4166 sales@finlaybrewer.co.uk