

SOUTH STREET

MAYFAIR W1





SOUTH STREET MAYFAIR W1

AN ELEGANT APARTMENT WITH
ELEVEN WINDOWS OVERLOOKING
THE MOUNT STREET GARDENS.

A grand four bedroom property of 2,592 square feet with impressive ceiling heights in a 24 hour portered mansion block, with the benefit of a share of the freehold.



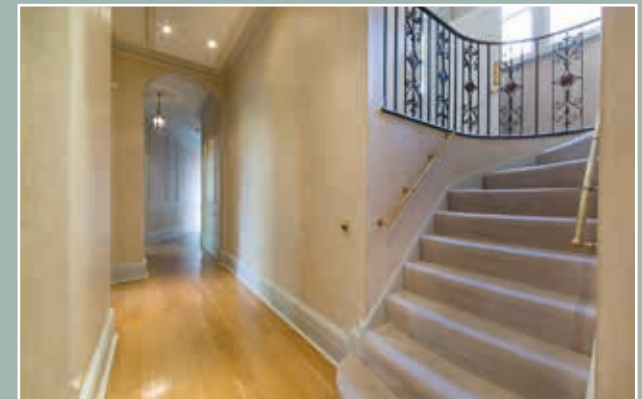
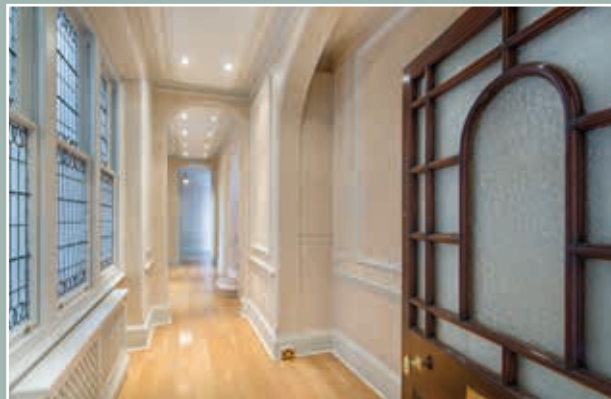


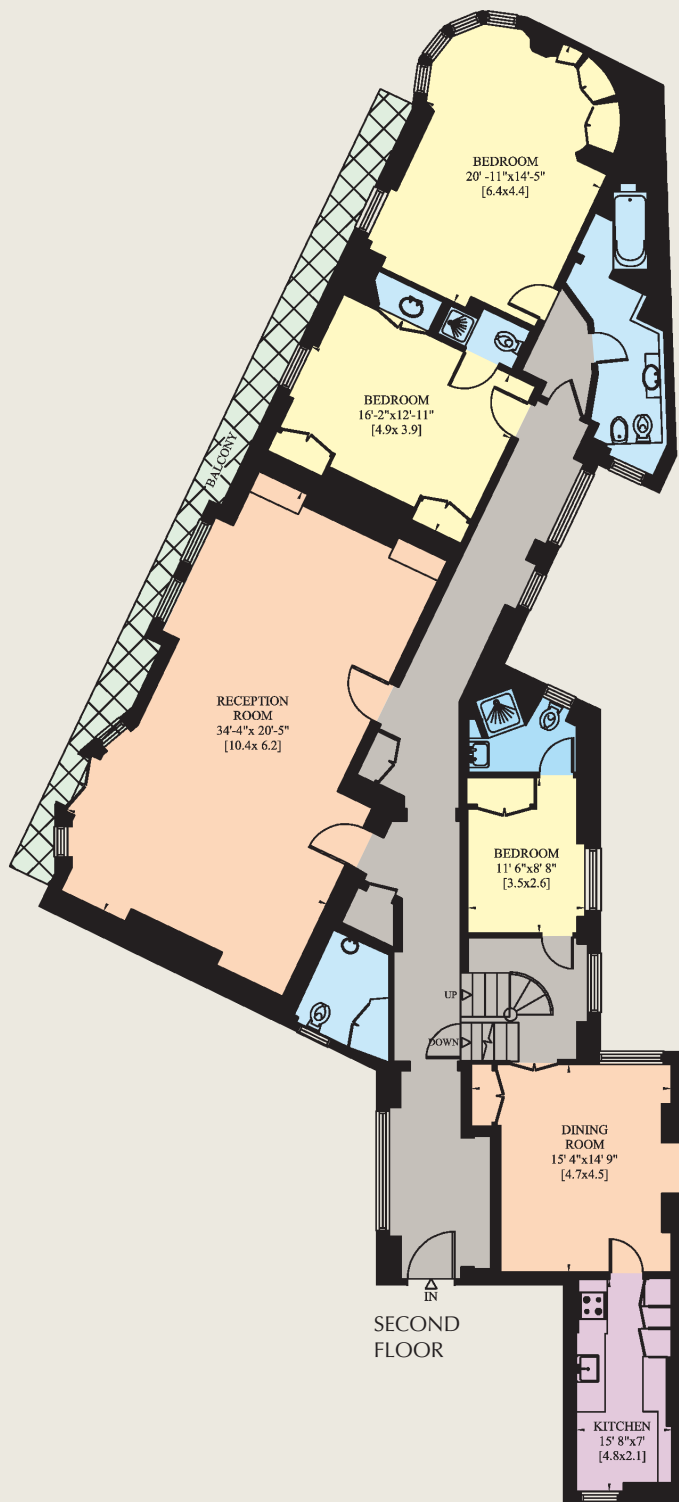
ACCOMMODATION & AMENITIES

With four bedrooms, three bathrooms and a beautiful double reception room with very high ceilings, this apartment further benefits from direct garden square views, a lift and three storage rooms in the basement.

LOCATION

South Street lies in the heart of the Mayfair Village, extending east from Park Lane, with 51 South Street at the head of Chesterfield Hill and moments from Mount Street. Well known for being one of Mayfair's premier apartment buildings, the residents of 51 South Street collectively own the freehold with the flats being held on very long leases.





GROSS INTERNAL AREA
241 SQ M / 2,592 SQ FT



LOWER SECOND FLOOR



TENURE
Share of Freehold

SERVICE CHARGE
Approximately £21,839 per annum

ASKING PRICE
£8,950,000



102 Mount Street, London W1K 2TH

T: 020 7529 5566

wetherell.co.uk

Wetherell have no authority to make or give any representations or warranties in relation to the property. These particulars do not form part of any offer or contract and must not be relied upon as statements or representations of fact. Any areas, measurements or distances are approximate. The text, photographs and plans are for guidance only and are not necessarily comprehensive. It should not be assumed that the property has all the necessary planning, building regulation or other consents and Wetherell have not tested any services, equipment or facilities. Purchasers must satisfy themselves by inspection or otherwise. Energy Efficiency Rating: Band F. April 2014.

Brochure by twentyonefifty Tel: 020 8778 2150