



HILL STREET MAYFAIR



Spacious Mayfair Duplex

£600 PER WEEK PLUS FEES
FURNISHED

WETHERELL
MAYFAIR'S FINEST PROPERTIES

102 Mount Street · London · W1K 2TH
T: 020 7529 5588 E: rentals@wetherell.co.uk
wetherell.co.uk



1982-2012

NO-ONE KNOWS MAYFAIR BETTER THAN WETHERELL



HILL STREET MAYFAIR



A spacious one bed duplex in the heart of Mayfair Village. Converted from the ground and lower ground floors of this townhouse this property maintains many of it's original period features.

HIGH CEILINGS • DUPLEX • PERIOD FEATURES

NO-ONE KNOWS MAYFAIR BETTER THAN WETHERELL



1982-2012



HILL STREET MAYFAIR

A spacious one bed duplex in the heart of Mayfair Village. The property consists of reception, fully fitted kitchen, large double bedroom with en suite bathroom and sauna. Arranged over the ground and lower ground floors of a converted period building this flat is conveniently situated for Mayfair's world renowned bars, restaurants and boutiques.

£600 PER WEEK PLUS FEES
FURNISHED

Wetherell have no authority to make or give any representations or warranties in relation to the property. These particulars do not form part of any offer or contract and must not be relied upon as statements or representations of fact. Any areas, measurements or distances are approximate. The text, photographs and plans are for guidance only and are not necessarily comprehensive. It should not be assumed that the property has all the necessary planning, building regulation or other consents and Wetherell have not tested any services, equipment or facilities. Purchasers must satisfy themselves by inspection or otherwise. 2014

WETHERELL
MAYFAIR'S FINEST PROPERTIES

102 Mount Street · London · W1K 2TH
T: 020 7529 5588 E: rentals@wetherell.co.uk
wetherell.co.uk

NO-ONE KNOWS MAYFAIR BETTER THAN WETHERELL



1982-2012



HILL STREET MAYFAIR

Hill Street, W1K

Approximate Gross Internal Area
90 sq m / 969 sq ft

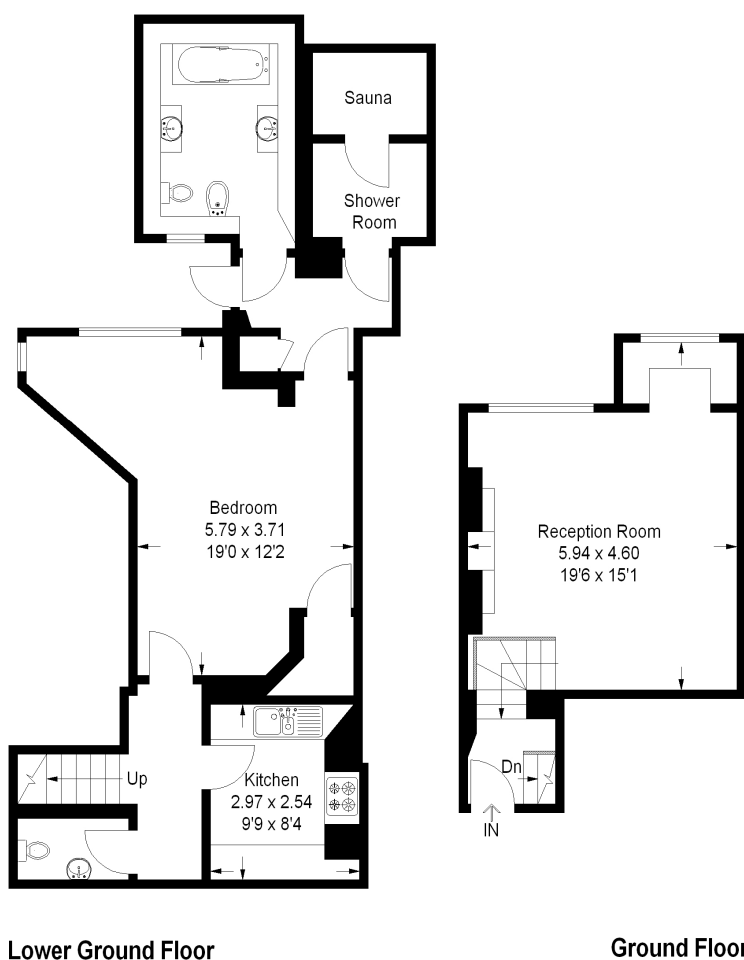


Illustration for identification purposes only, measurements are approximate,
not to scale. FloorplansUsketch.com © 2014 (ID90651)

Wetherell have no authority to make or give any representations or warranties in relation to the property. These particulars do not form part of any offer or contract and must not be relied upon as statements or representations of fact. Any areas, measurements or distances are approximate. The text, photographs and plans are for guidance only and are not necessarily comprehensive. It should not be assumed that the property has all the necessary planning, building regulation or other consents and Wetherell have not tested any services, equipment or facilities. Purchasers must satisfy themselves by inspection or otherwise. 2014

WETHERELL

MAYFAIR'S FINEST PROPERTIES

102 Mount Street · London · W1K 2TH
T: 020 7529 5588 E: rentals@wetherell.co.uk
wetherell.co.uk



NO-ONE KNOWS MAYFAIR BETTER THAN WETHERELL

1982-2012