



HILL STREET MAYFAIR



A bright studio apartment on the ground floor of this Portered building with foyer and lift in Mayfair Village.

£345 PER WEEK PLUS FEES
FURNISHED

WETHERELL
MAYFAIR'S FINEST PROPERTIES

102 Mount Street · London · W1K 2TH
T: 020 7529 5588 E: rentals@wetherell.co.uk
wetherell.co.uk

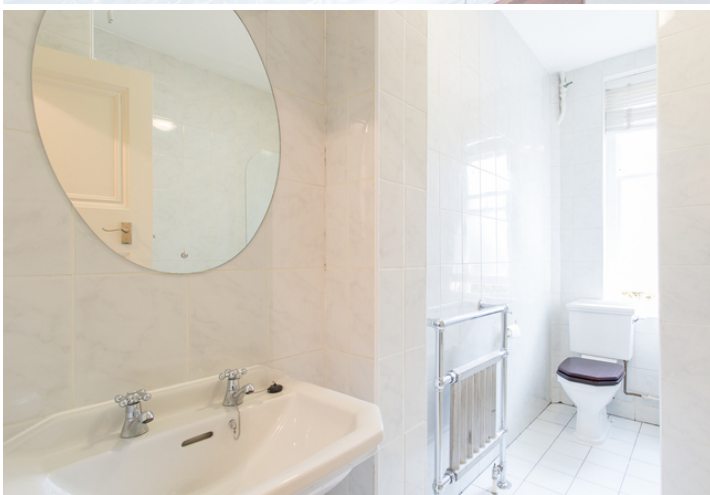
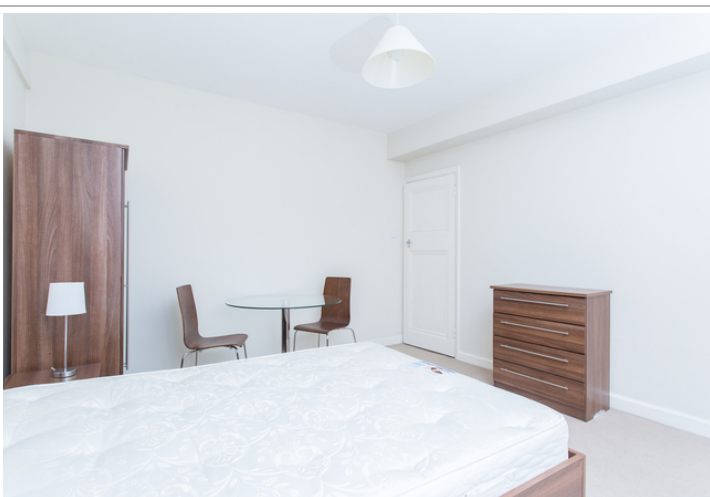
NO-ONE KNOWS MAYFAIR BETTER THAN WETHERELL



1982-2012



HILL STREET MAYFAIR



STUDIO • FOYER • PORTER

NO-ONE KNOWS MAYFAIR BETTER THAN WETHERELL





HILL STREET MAYFAIR

A bright studio apartment on the ground floor of this Portered building with foyer and lift in Mayfair Village.

This property has been recently refurbished in a contemporary style and offers generous accommodation.

City professionals will love this flat for its easy access to central London alternatively if you're a retail enthusiast the luxurious boutiques of Bond street are only a short walk away.

- * Studio Reception
- * Bathroom
- * Lift
- * Day Porter
- * Foyer
- * 269sq.ft.

£345 PER WEEK PLUS FEES
FURNISHED

Wetherell have no authority to make or give any representations or warranties in relation to the property. These particulars do not form part of any offer or contract and must not be relied upon as statements or representations of fact. Any areas, measurements or distances are approximate. The text, photographs and plans are for guidance only and are not necessarily comprehensive. It should not be assumed that the property has all the necessary planning, building regulation or other consents and Wetherell have not tested any services, equipment or facilities. Purchasers must satisfy themselves by inspection or otherwise. 2015

WETHERELL
MAYFAIR'S FINEST PROPERTIES

102 Mount Street · London · W1K 2TH
T: 020 7529 5588 E: rentals@wetherell.co.uk
wetherell.co.uk

NO-ONE KNOWS MAYFAIR BETTER THAN WETHERELL



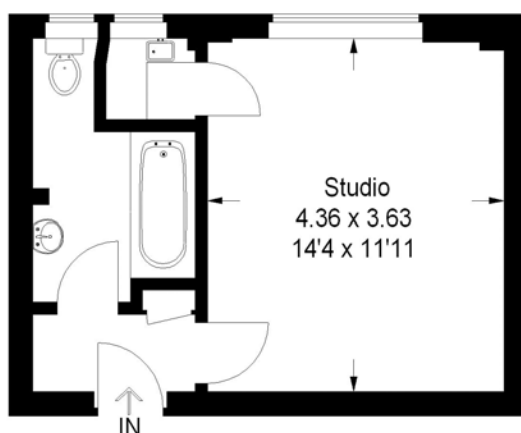


HILL STREET MAYFAIR

Hill Street, W1J



Approximate Gross Internal Area = 25 sq m / 269 sq ft



Ground Floor

Illustration for identification purposes only, measurements are approximate, not to scale.
FloorplansUsketch.com © 2014 (ID110126)

Wetherell have no authority to make or give any representations or warranties in relation to the property. These particulars do not form part of any offer or contract and must not be relied upon as statements or representations of fact. Any areas, measurements or distances are approximate. The text, photographs and plans are for guidance only and are not necessarily comprehensive. It should not be assumed that the property has all the necessary planning, building regulation or other consents and Wetherell have not tested any services, equipment or facilities. Purchasers must satisfy themselves by inspection or otherwise. 2015

WETHERELL

MAYFAIR'S FINEST PROPERTIES

102 Mount Street · London · W1K 2TH
T: 020 7529 5588 E: rentals@wetherell.co.uk
wetherell.co.uk



NO-ONE KNOWS MAYFAIR BETTER THAN WETHERELL

1982-2012