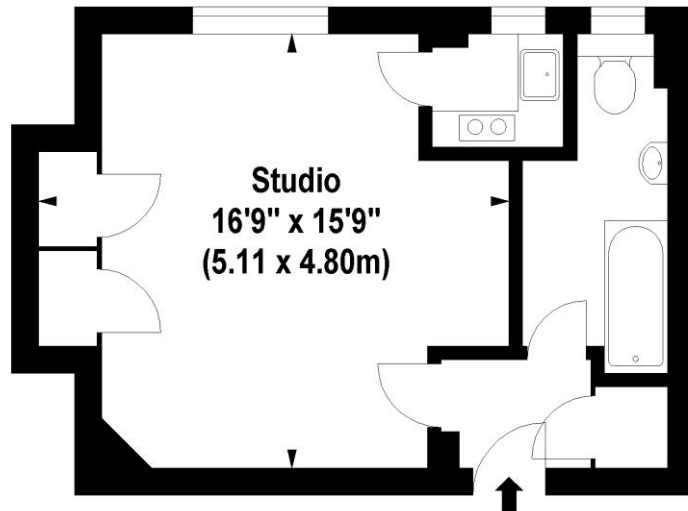




242 Nell Gwynn House
SLOANE AVENUE, SW3

**Nell Gwynn House,
Sloane Avenue, SW3**
Approx. Gross Internal Area *
336 Sq Ft - 31.18 Sq M



Second Floor

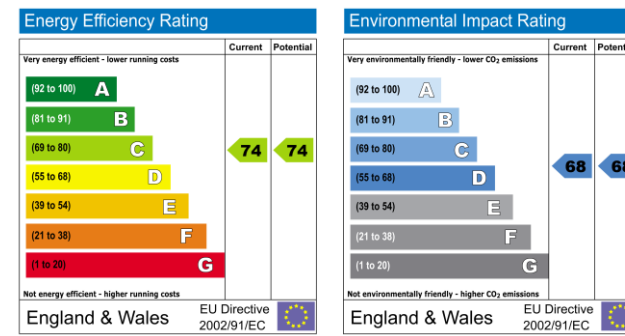
Illustration For Identification Purposes Only. Not To Scale
*Floorplan Drawn According To RICS Guidelines
© www.totalvista.co.uk 2010 (aa)

Flat 242 Nell Gwynn House, Sloane Avenue. SW3

Good studio flat in this sought after block suitable for investors and owner occupiers alike. Good transport links at South Kensington and Sloane Square with local amenities on Sloane Avenue. Property benefits from communal hot water and heating, 24hour porter, on-site letting office.

Terms

- Tenure:** Share of Freehold
- Service Charge:** £4200 per annum approx
- Ground Rent:** £50 per annum approx
- Asking Price:** £365,000 Subject to contract



PLEASE NOTE

These details have been prepared as a general guide and we have not carried out a survey. The services, appliances and specific fittings have not been tested. Measurements are approximate and lease details and service charges are as quoted by the vendor.

Brochure by [thecapitalgroup](http://thecapitalgroup.com) Tel: 020-8671 5448

MALVERNS
Estate Agents
020-7589 8122
Malvern Court, Onslow Square, London SW7 3HU
Fax: 020-7589 4403
email:sales@malverns.co.uk