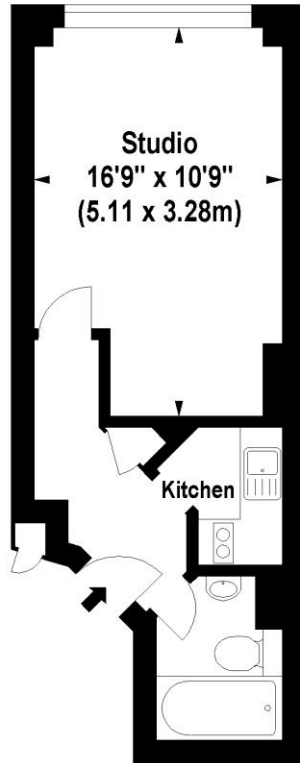




66 Florin Court
Charterhouse Square. EC1M

Charterhouse Square, EC1

Approx. Gross Internal Area *
278 Sq Ft - 25.83 Sq M



Fifth Floor

Illustration For Identification Purposes Only. Not To Scale
*Floorplan Drawn According To RICS Guidelines
© www.totalvista.co.uk 2010 (aa)

66 Florin Court, Charterhouse Square. EC1M

Well proportioned studio flat in this purpose built block with good links to the City of London.

Benefits include Swimming pool in the basement and shared roof terrace. Property comes with communal hot water and heating.

The nearest tube is Barbican station and the property is presently tenanted.

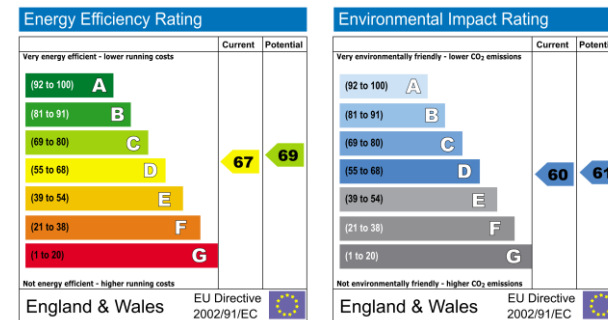
Terms

Tenure: Leasehold. 102 Years Remaining.

Service Charge: £2352 per annum approx

Ground Rent: TBC

Asking Price: £249,500 Subject to contract



PLEASE NOTE

These details have been prepared as a general guide and we have not carried out a survey. The services, appliances and specific fittings have not been tested. Measurements are approximate and lease details and service charges are as quoted by the vendor.

Brochure by [thecapitalgroup](http://thecapitalgroup.com) Tel: 020-8671 5448



020-7589 8122

Malvern Court, Onslow Square, London SW7 3HU
Fax: 020-7589 4403
email:sales@malverns.co.uk