

SALTER REX

Chartered Surveyors & Estate Agents



CASTLEHAVEN ROAD, NW1

£850,000 FREEHOLD

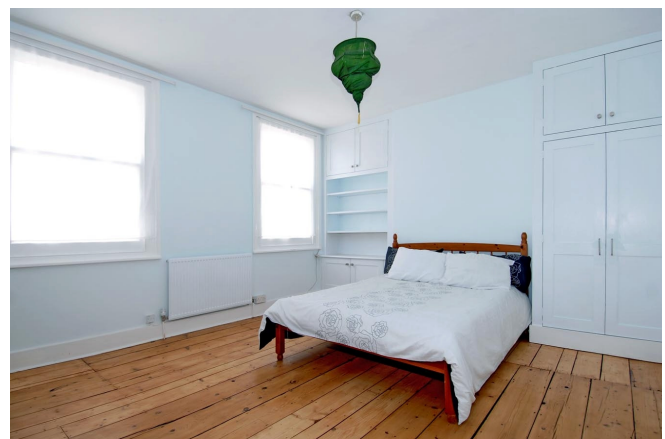
RECEPTION



CASTLEHAVEN ROAD, NW1

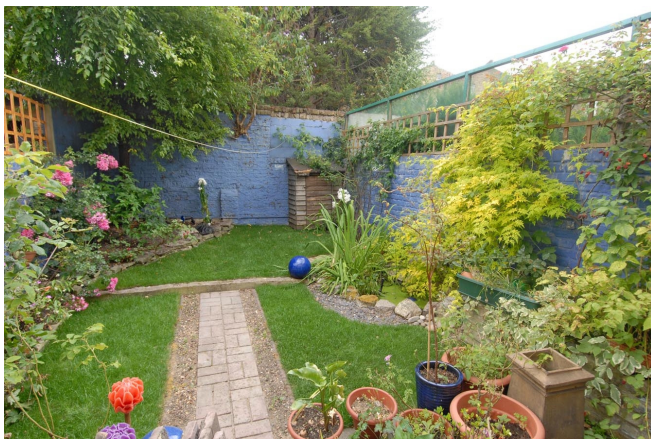
An outstanding three storey Victorian house , set within a handsome terrace, centrally located within easy walking distance of the amenities of both Camden and Kentish Town.

The accommodation comprises; three bedrooms, bathroom, open-plan lounge and large eat-in kitchen. To the rear is a pretty West-facing garden.



BEDROOM

KITCHEN

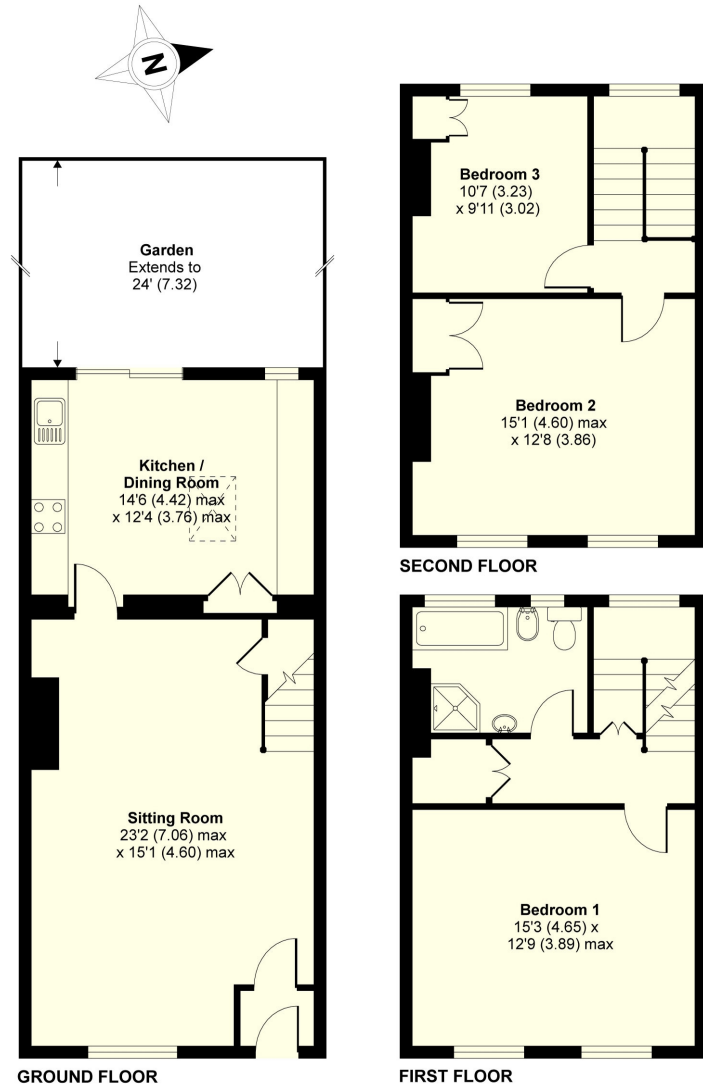


REAR ASPECT



BATHROOM

FLOOR PLAN

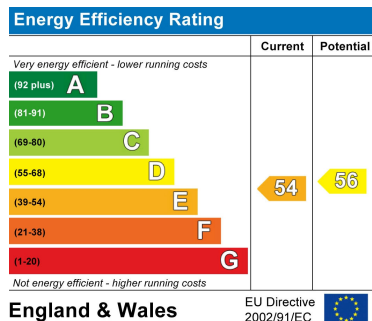


GROSS FLOOR AREA
INTERNAL 1284 SQFT 119.2 SQMETRES

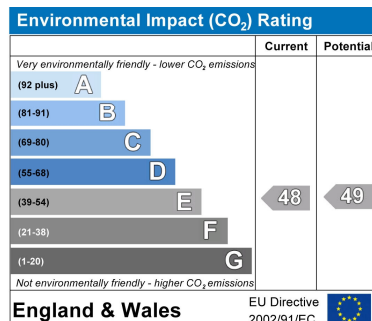
Castlehaven Road, London, NW1

Whilst every attempt has been made to ensure the accuracy of the floor plans contained here, measurements of doors, windows and

ENERGY PERFORMANCE CHART



CONTACT DETAILS



SALTER REX
Chartered Surveyors & Estate Agents

SALTER REX KENTISH TOWN
CROWN HOUSE
265-267 KENTISH TOWN ROAD
LONDON
NW5 2TP
T 020 7482 4488 F 020 7485 8488
E: residential@salter-rex.co.uk
W: www.salter-rex.co.uk