

SALTER REX

Chartered Surveyors & Estate Agents



ROYAL COLLEGE STREET, NW1

£369,950 LEASEHOLD

LOUNGE



ROYAL COLLEGE STREET, NW1

An impressive two double bedroom ground floor flat, converted laterally across two Victorian terraced houses, centrally located within a short walk of Camden Town Underground.

Bright, spacious and conveniently arranged, the property is well presented throughout and benefits from use of a good size communal garden with an open South Westerley aspect



BEDROOM

Salter Rex Residential Estate Agents for themselves and for the Vendors or Lessors of this property whose Agents they are, give notice that:-

1. These particulars do not constitute, nor constitute any part of, an offer or contract. Statements contained in these particulars as to this property are made without responsibility on the part of Salter Rex, the Vendors or Lessors. None of the statements contained in these particulars as to this property are to be relied upon as statements or representation of fact. All dimensions given are approximate only.
2. Any intending purchasers must satisfy themselves by inspection or otherwise as to the correctness of each of the statements contained in these particulars. The Vendor or Lessor does not make or give and neither Salter Rex Residential nor any person in their employment has any authority to make or give any representation or warranty whatsoever in relation to this property.

BATHROOM

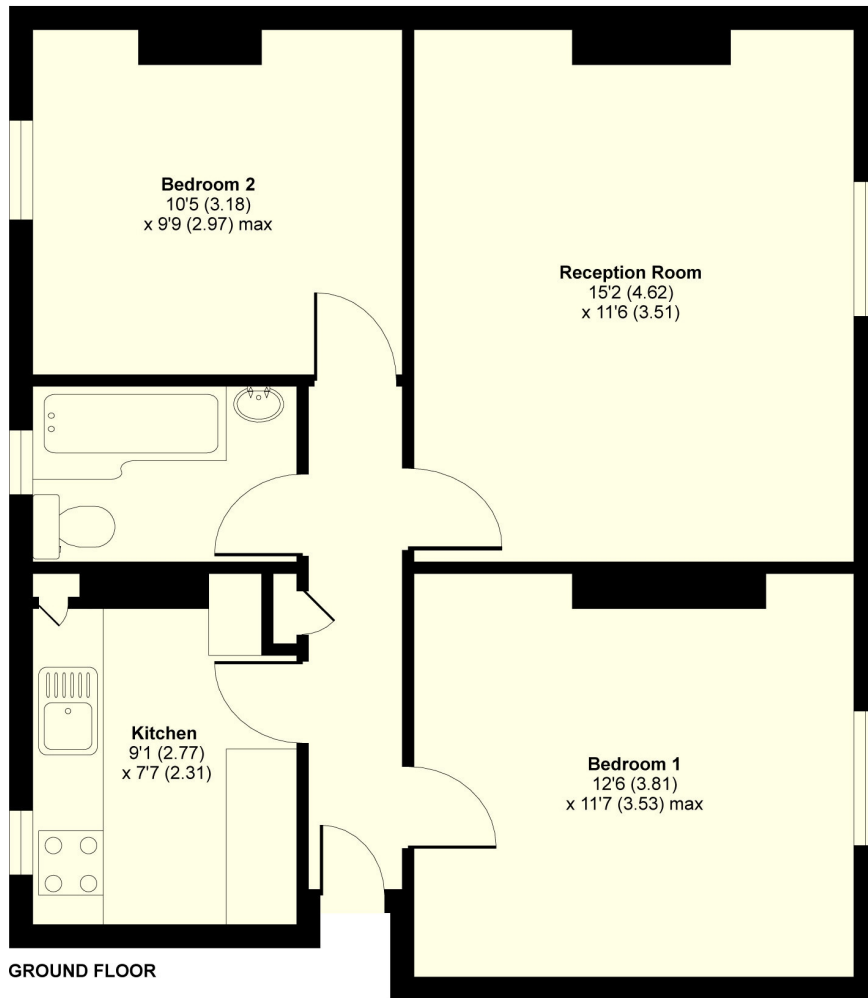


KITCHEN



REAR ASPECT

FLOOR PLAN

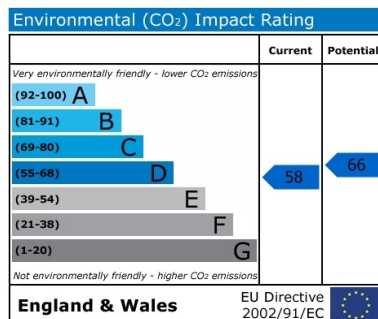
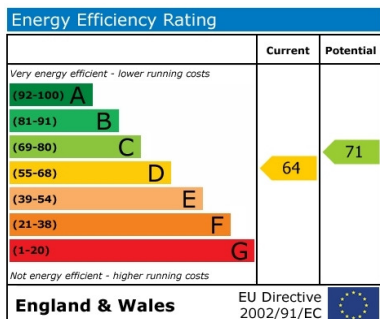


GROSS FLOOR AREA
INTERNAL 602 SQFT 55.9 SQMETRES

Royal College Street, London, NW1

ENERGY PERFORMANCE CHART

CONTACT DETAILS



SALTER REX
Chartered Surveyors & Estate Agents

SALTER REX KENTISH TOWN
CROWN HOUSE
265-267 KENTISH TOWN ROAD
LONDON
NW5 2TP
T 020 7482 4488 F 020 7485 8488
E: residential@salter-rex.co.uk
W: www.salter-rex.co.uk