



CHESTERFIELD STREET MAYFAIR W1

A grand yet comfortable freehold townhouse of 5,124 square feet between Charles Street and Curzon Street.



The house is ready to move in to and benefits from comfort cooling in all the principal rooms and features terraces at ground & first floors, the latter giving views over the gardens of the Saudi Arabian Embassy.

Formal entertaining rooms occupy the ground and first floors, the lower ground floor being more informal family space. The upper floors are occupied by five bedroom suites, including a sumptuous master bedroom suite and, should it be used as a nursery or by teenage children, on the top floor there is a kitchenette.



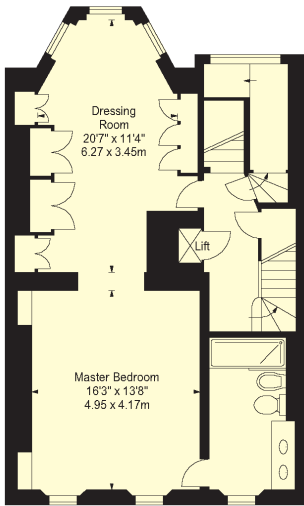


Accommodation

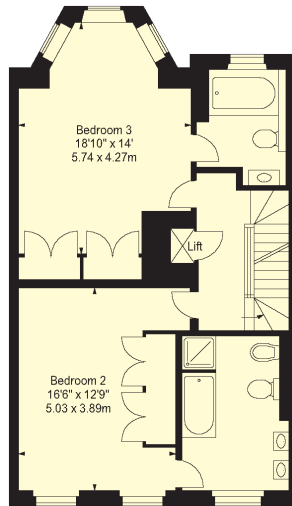
- Entrance Hall
- Four Formal Reception Rooms
- Kitchen / Breakfast Room
- Family Room
- Master Bedroom with En Suite Bathroom & Dressing room
- 4 Further Bedrooms
- 4 Further Bathrooms (3 En Suite)
- Utility Room
- Cloakroom
- 5,124 Sq Ft

Amenities

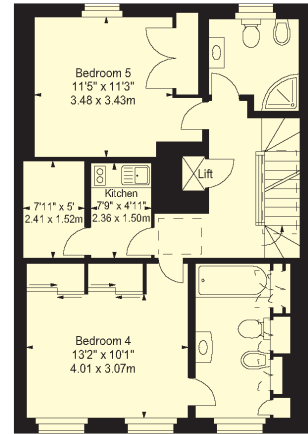
- 2 Terraces
- Storage Vault
- Passenger Lift (to all floors)
- Comfort Cooling
- Freehold



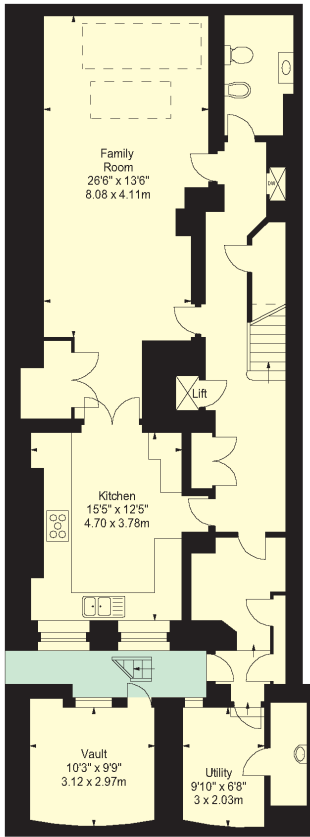
SECOND FLOOR



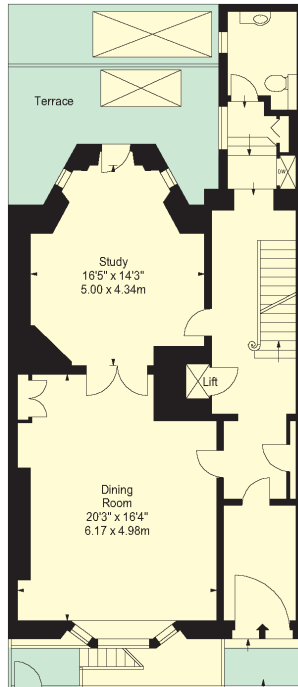
THIRD FLOOR



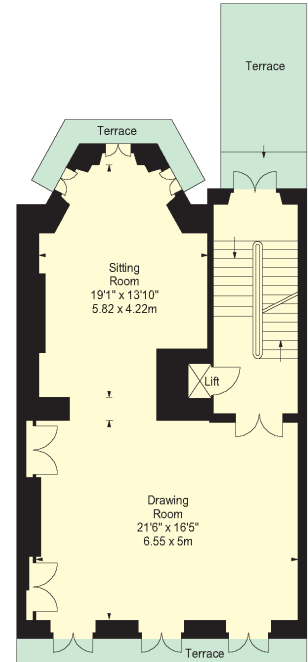
FOURTH FLOOR



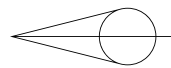
LOWER GROUND FLOOR



RAISED GROUND FLOOR

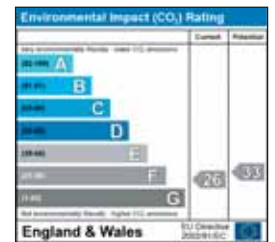
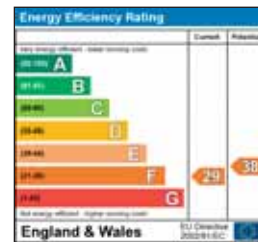


FIRST FLOOR



Approximate Gross Internal Floor Area
5,124 square feet (476.02 square metres)

Freehold
£10,750,000 subject to contract
Viewing by appointment through joint sole agents



WETHERELL
MAYFAIR'S FINEST PROPERTIES
102 Mount Street · London · W1K 2TH
020 7529 5566
wetherell.co.uk

Knight Frank
Mayfair
020 7499 1012
KnightFrank.co.uk

Important notice
1. Particulars: These particulars are not an offer or contract, nor part of one. You should not rely on statements by Knight Frank LLP or Wetherell in the particulars or by word of mouth or in writing ("information") as being factually accurate about the property, its condition or its value. Neither Knight Frank LLP nor Wetherell has any authority to make any representations about the property, and accordingly any information given is entirely without responsibility on the part of the agents, seller(s) or lessor(s). 2. Photos etc: The photographs show only certain parts of the property as they appeared at the time they were taken. Areas, measurements and distances given are approximate only. 3. Regulations etc: Any reference to alterations to, or use of, any part of the property does not mean that any necessary planning, building regulations or other consent has been obtained. A buyer or lessee must find out by inspection or in other ways that these matters have been properly dealt with and that all information is correct. 4. VAT: The VAT position relating to the property may change without notice. Particulars dated: October 2011. Photographs dated: October 2011. Knight Frank LLP is a limited liability partnership registered in England with registered number OC305934. Our registered office is 55 Baker Street, London, W1U 8AN, where you may look at a list of members' names.